

Landscape Projects and opportunities for using NCA: Insights based on an overview of the World Bank portfolio

Stefano Pagiola
Shun Chonabayashi

Environment, Natural Resources, and the Blue Economy
World Bank

4th Forum on Natural Capital Accounting for Better Policy
Measuring and Valuing Natural Capital to Improve Landscape Management and Governance
Kampala, Uganda, November 18-19, 2019

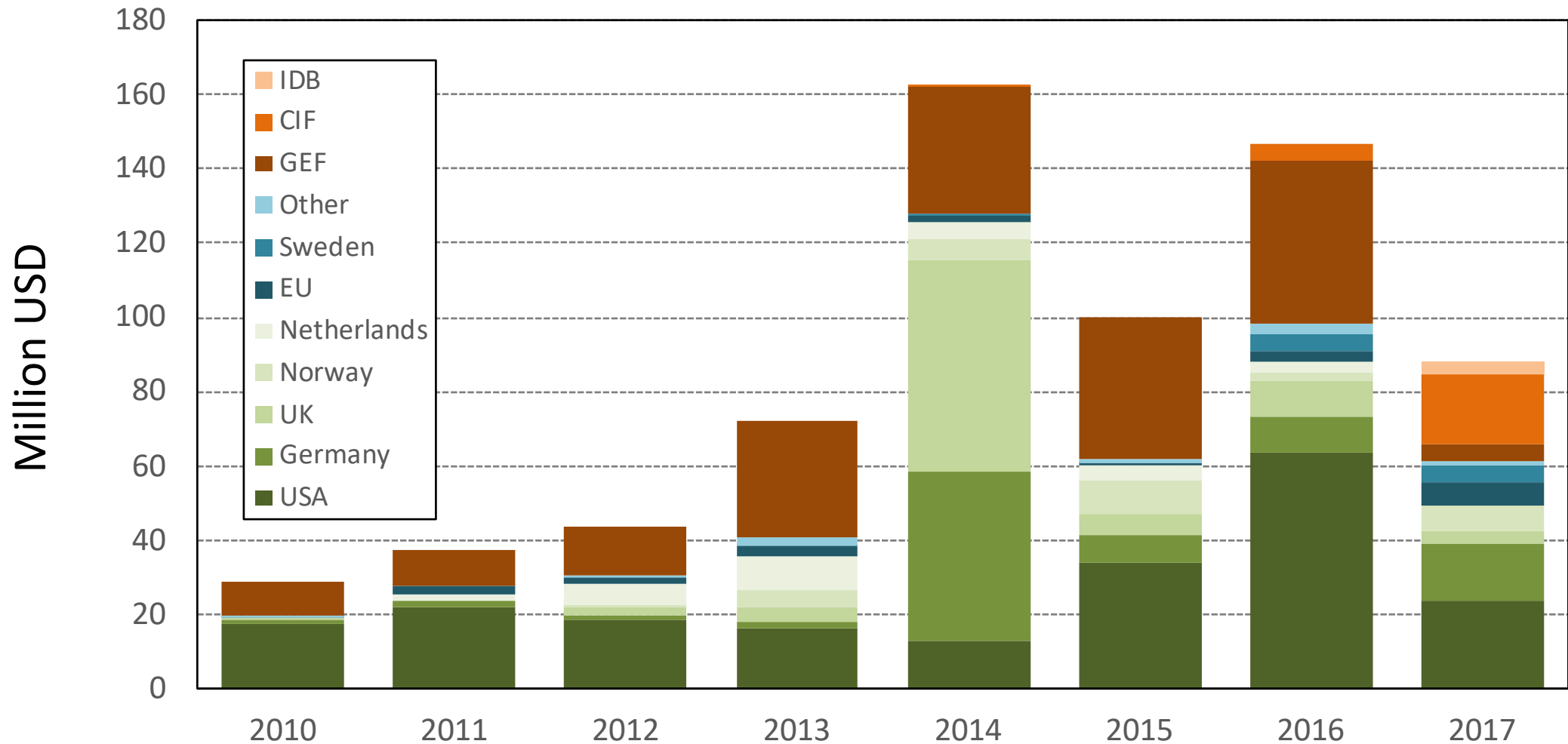


Landscape projects

- No widely accepted formal definition
- Landscape projects usually consider:
 - Multiple land uses
 - Interactions between them
 - Effects outside the area (eg hydrological, biodiversity, carbon)
 - Often include non-land use activities (roads, tenure reform, etc)

Support to landscape projects have been growing

Donors and multilateral development banks

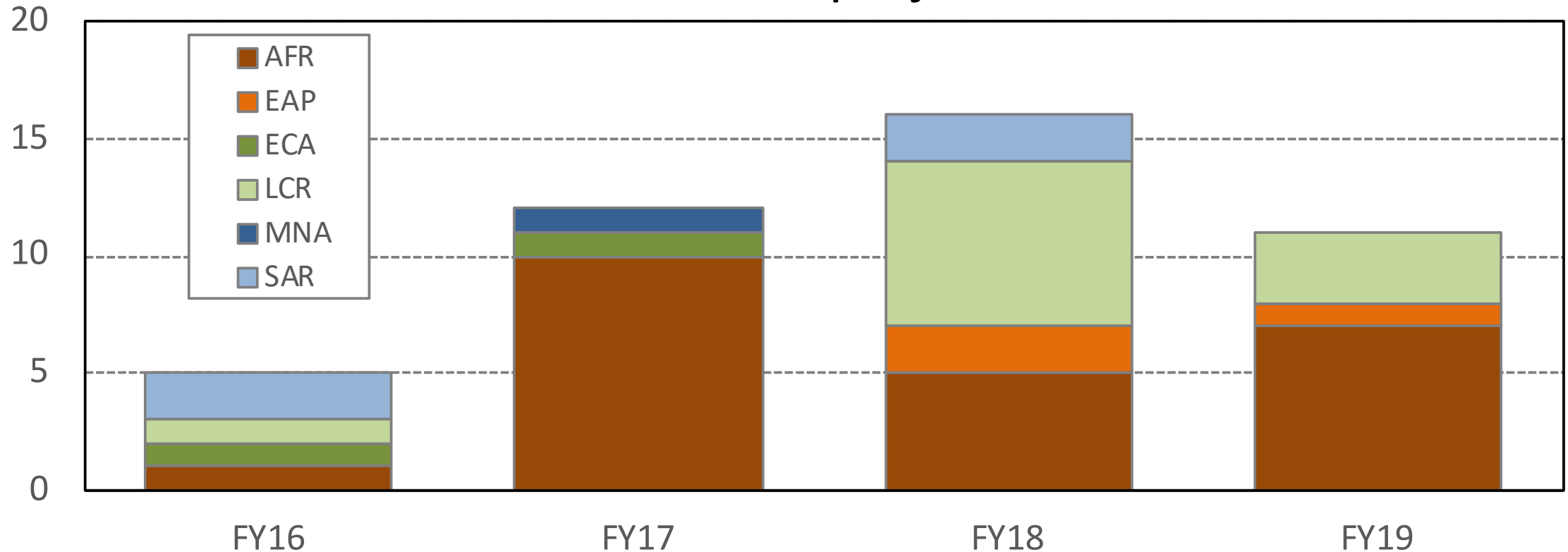


Based on data in OECD Creditor Reporting System (CRS) database

Projects with "Landscape" in their title, but omitting projects with modifiers to 'landscape' such as 'political', 'industrial', 'cultural'

Landscape projects have been growing

World Bank/IDA Number of projects



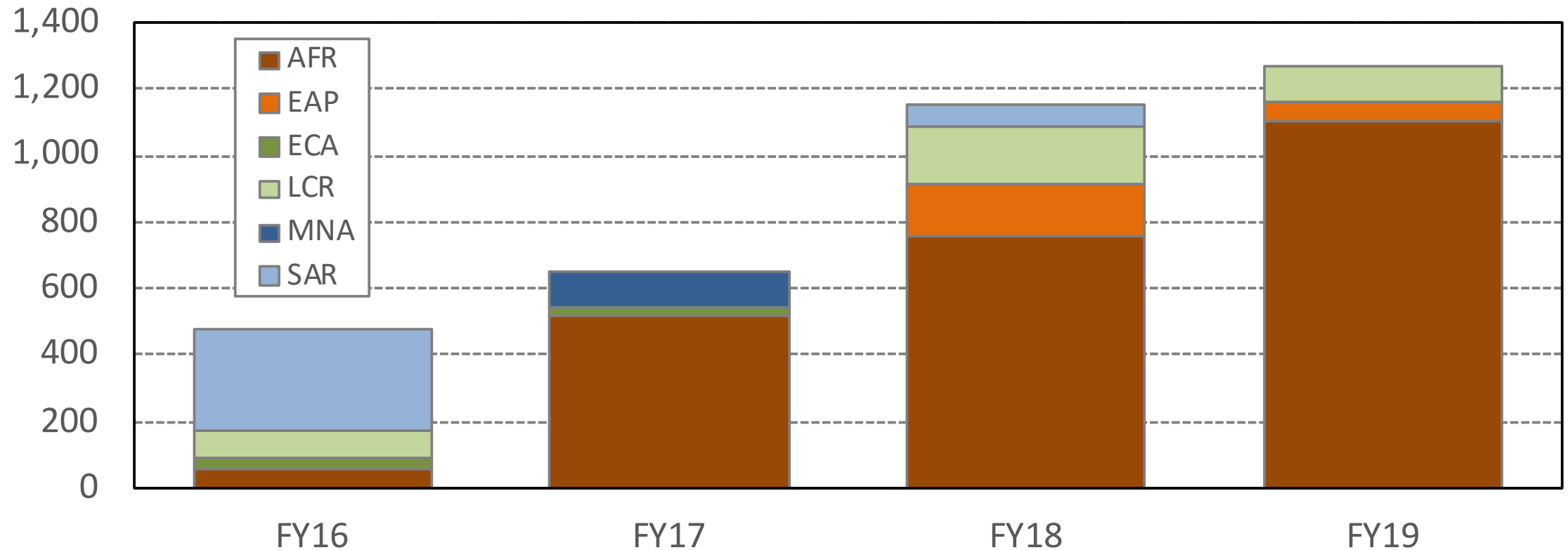
Projects tagged with “Landscape management” theme in Operations Portal

Non-landscape approach projects omitted

Projects with multiple financing sources consolidated

Landscape projects have been growing

World Bank/IDA Total commitments (USD million)

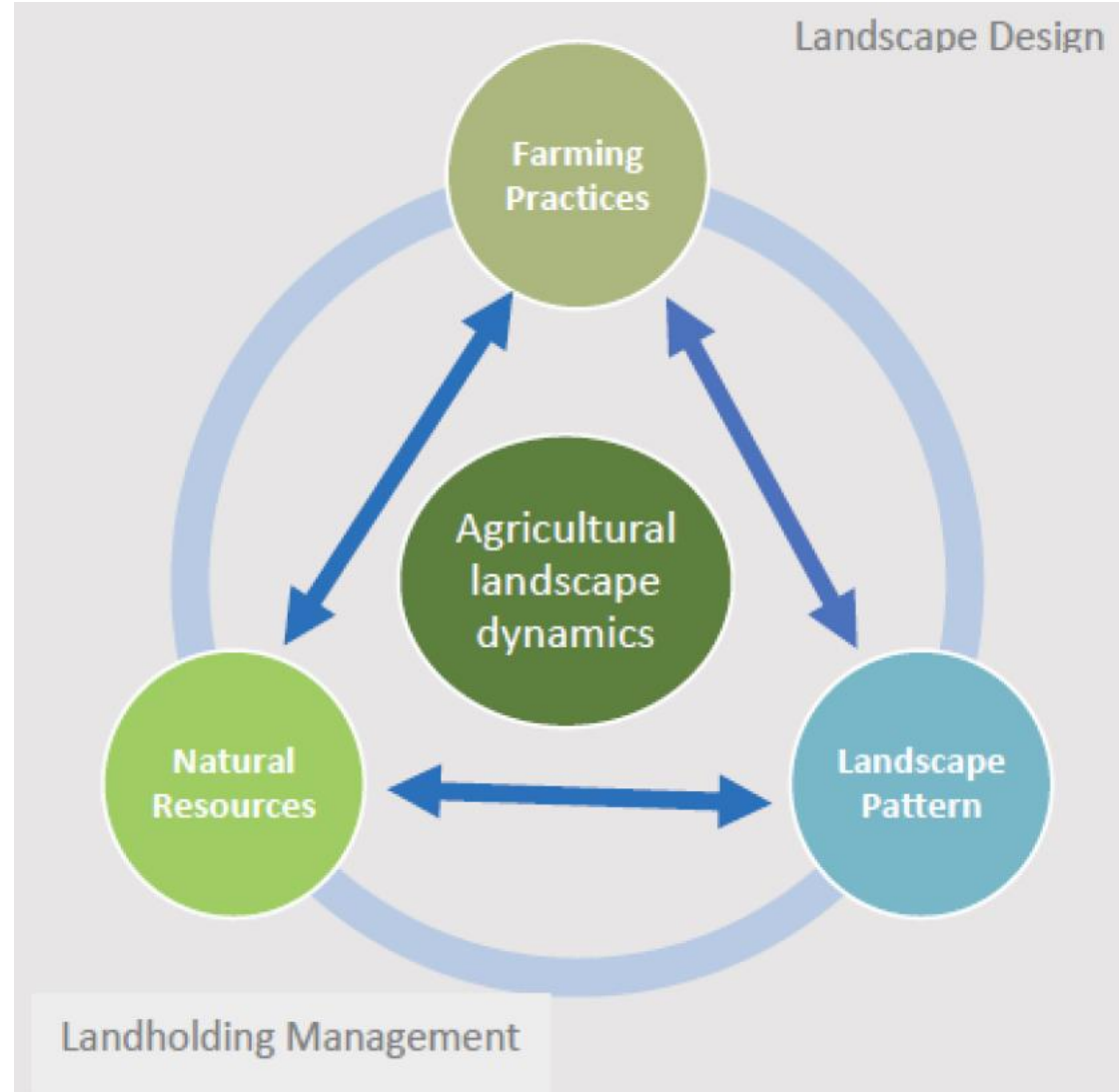


Projects tagged with "Landscape management" theme in Operations Portal

Non-landscape approach projects omitted

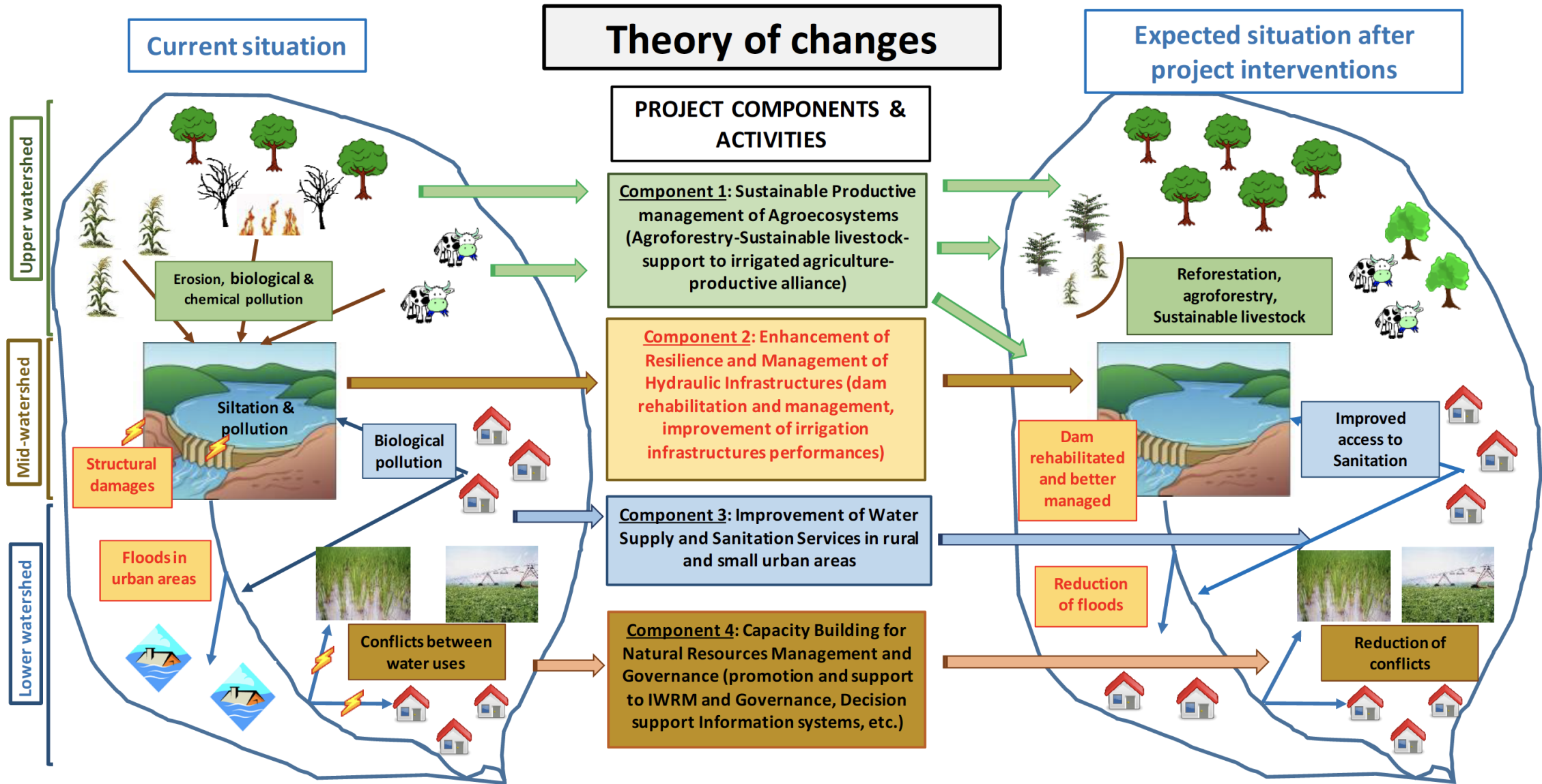
Projects with multiple financing sources consolidated

Landscape project conceptual framework

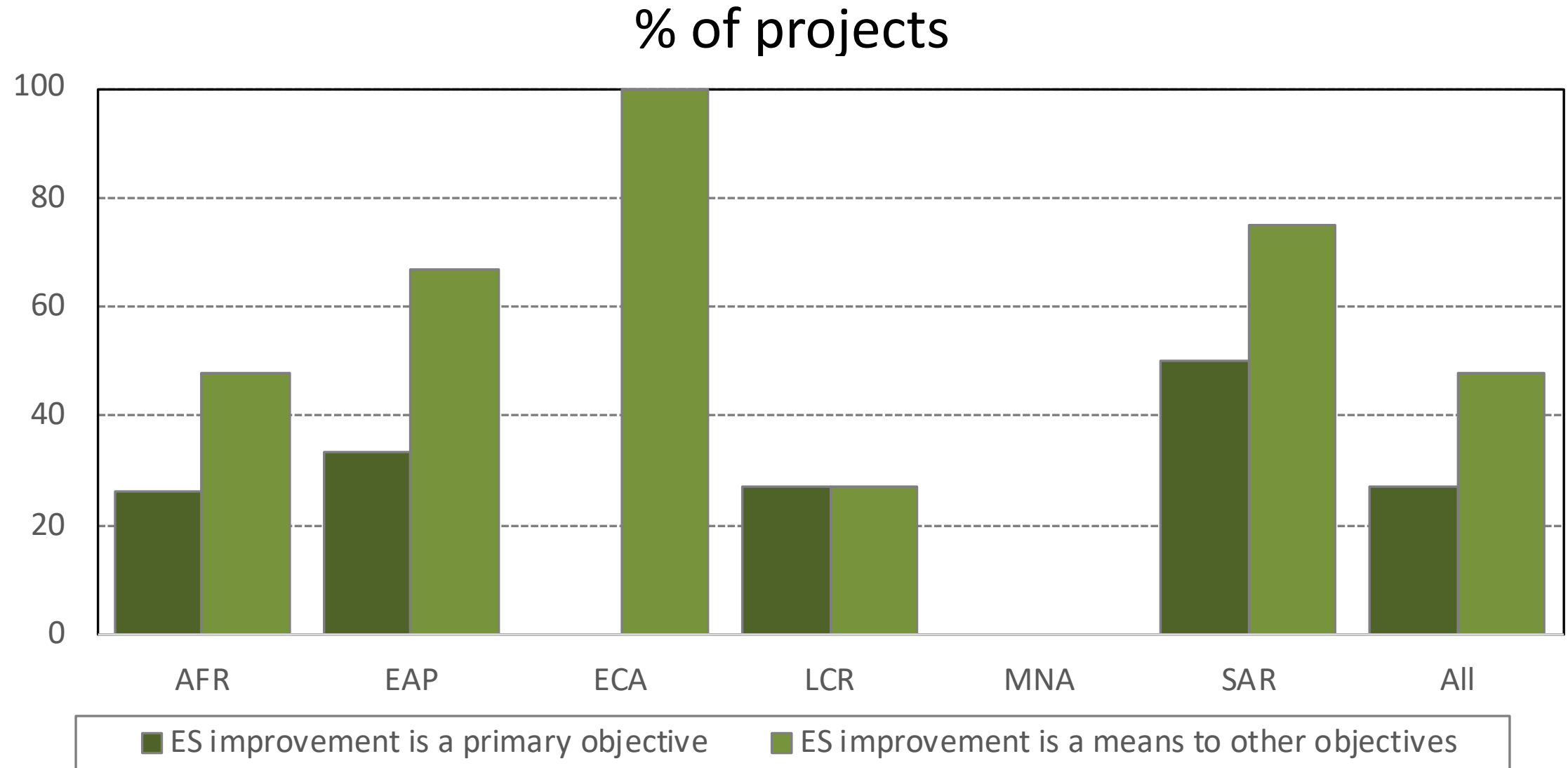


Brazil Integrated Landscape Management in the Cerrado Biome (P164602)

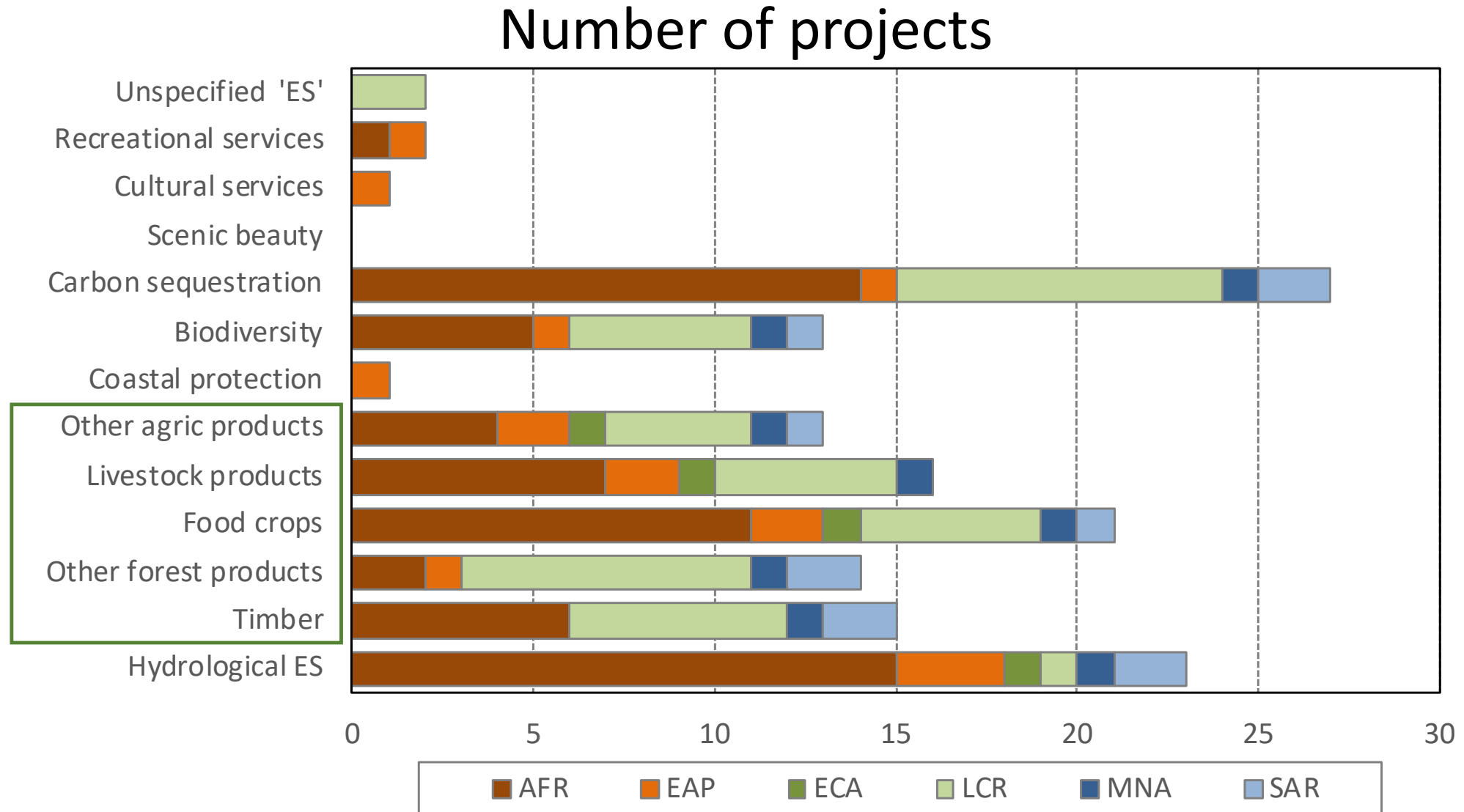
Theory of change



Landscape projects often target ES improvements — usually as a means to an end



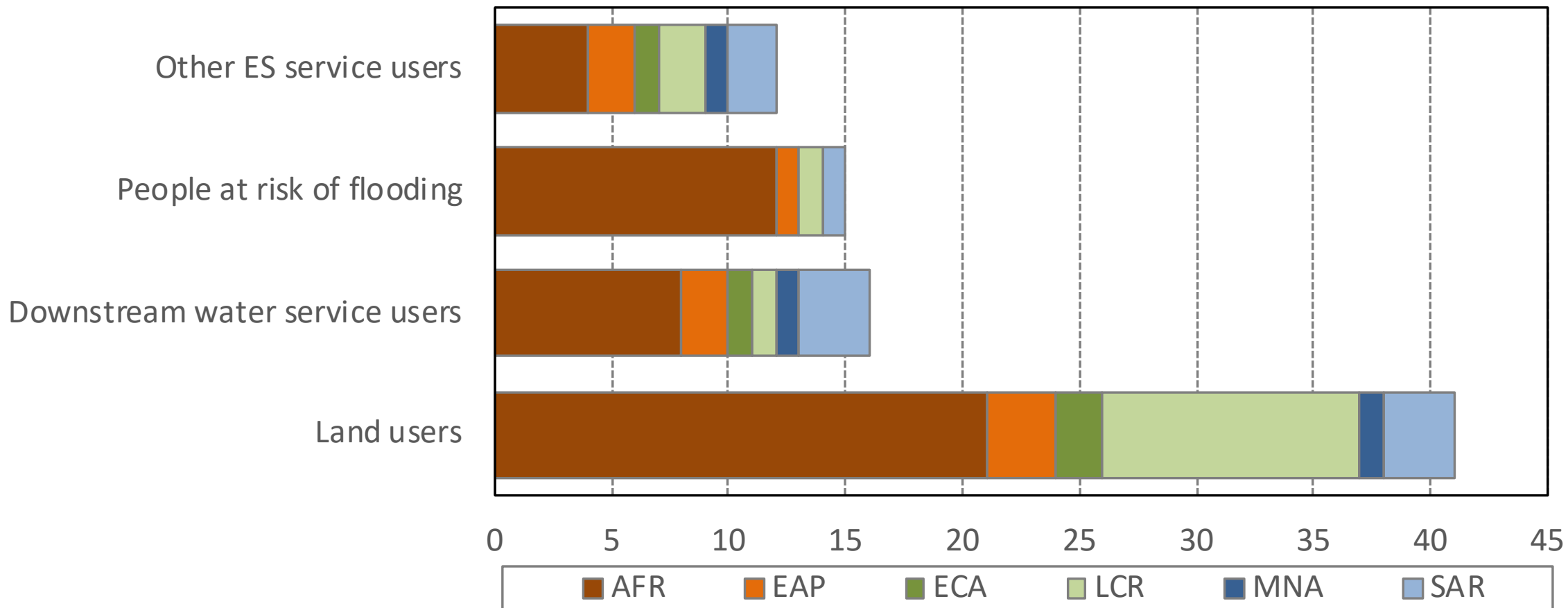
Landscape projects often target ES improvements



Only includes ES that are explicitly mentioned

Expected beneficiaries of landscape projects

Number of projects



Only includes groups that are explicitly mentioned

Potential NCA contributions to landscape projects

- NCA could:
 - Quantify data in transparent and consistent way
 - Provide framework for saying to whom benefits accrue
- This would help:
 - Make the case for landscape projects
 - Design landscape projects
 - Organize M&E to monitor project results
- For this to work, need:
 - NCA to be conducted and results presented in relatively disaggregated way (spatially and by type of ecosystem)
 - Tools and data used for NCA to be available, as projects will often need more detailed analyses and/or examination of specific alternative scenarios

Potential NCA contributions to landscape projects

- Policy dialog/problem identification
- Diagnosis
- Prioritization
- Identifying winner and losers
- Design of incentive mechanisms
- Cost-benefit analysis
- Monitoring of outcomes

NCA data available before
project decision is made

Projects currently rely on data that is:

- Unsystematic
 - Qualitative/anecdotal
 - Obtained elsewhere (benefits transfer)
 - Incommensurate
- NCA data more comprehensive
than project would otherwise
have

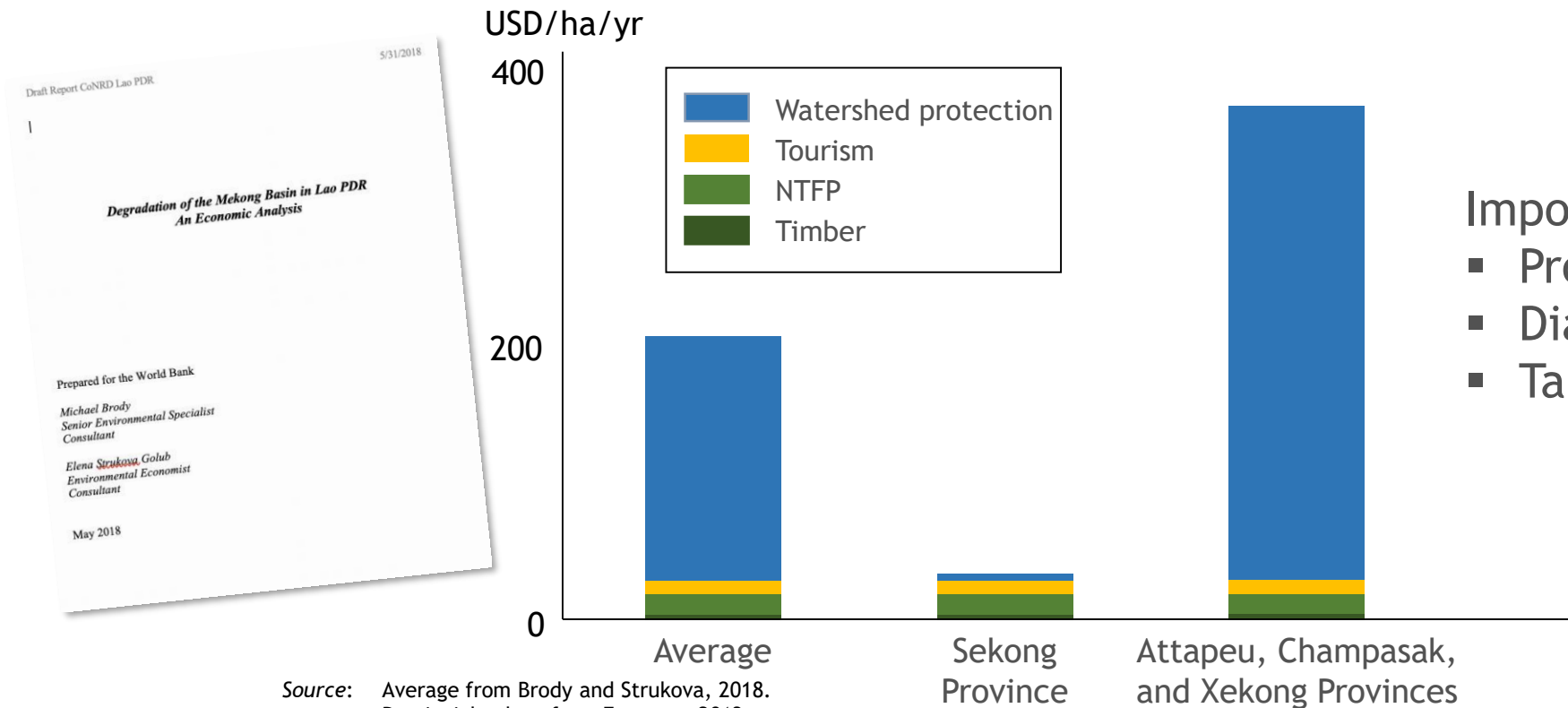
NCA data available
after project ends

What do landscape projects need from WAVES/NCA?

Sub-national differences

- National-level averages not very useful
- Need sub-national data

Value of forests in Laos



- Important for
- Problem identification
 - Diagnosis
 - Targeting

Source: Average from Brody and Strukova, 2018.
Provincial values from Emerton, 2013.

What do landscape projects need from WAVES/NCA?

Access to tools and data

- Understand interactions between landscape elements
- Evaluate alternative scenarios

How can landscape projects contribute to NCA?

- Monitor to confirm how land uses affect ES
- Targeted research to improve models
 - Eg Erosion monitoring plots to measure USLE 'C' factors