



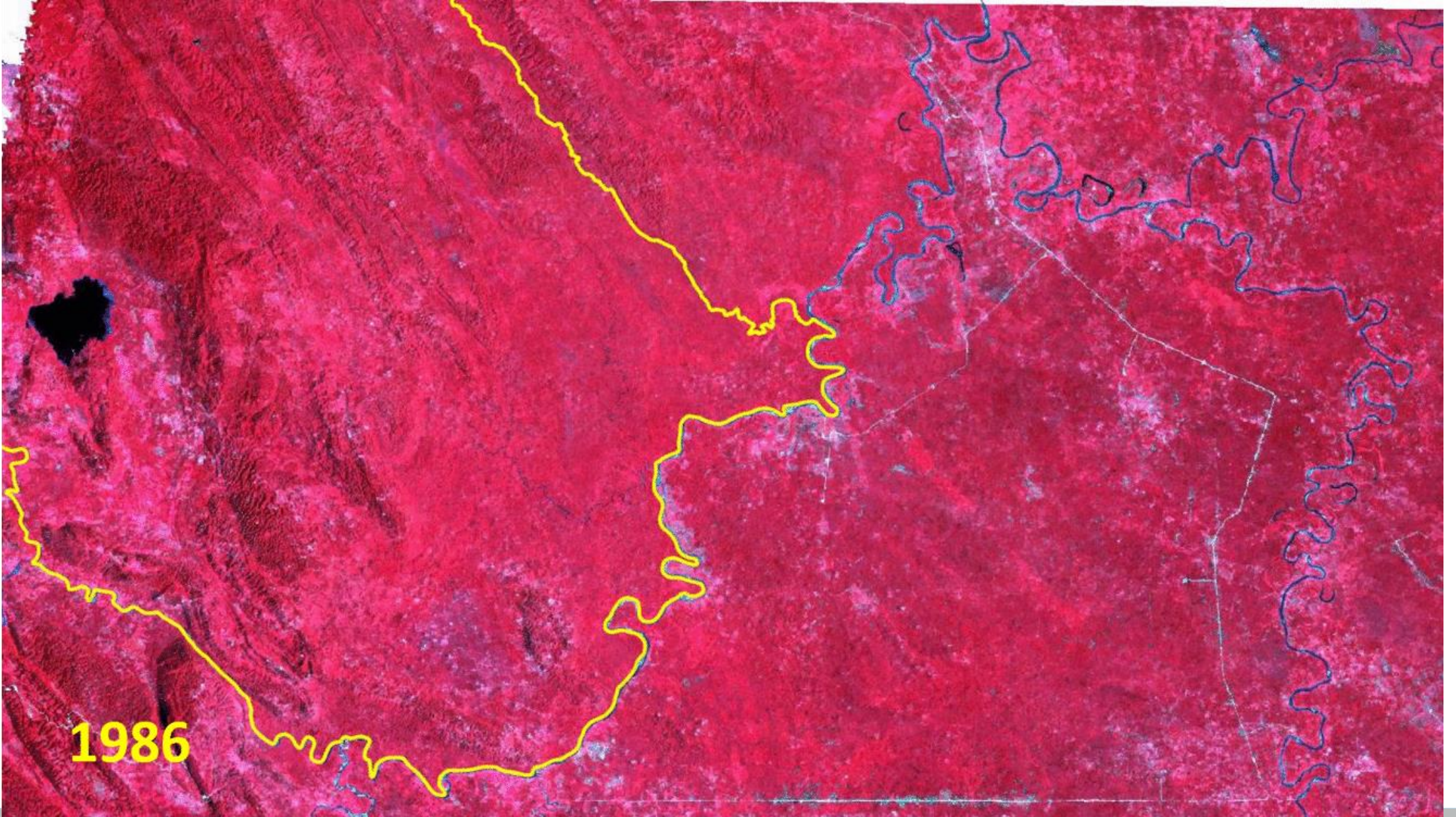
SEEA-EEA Mx and Natural Protected Areas (NPA)

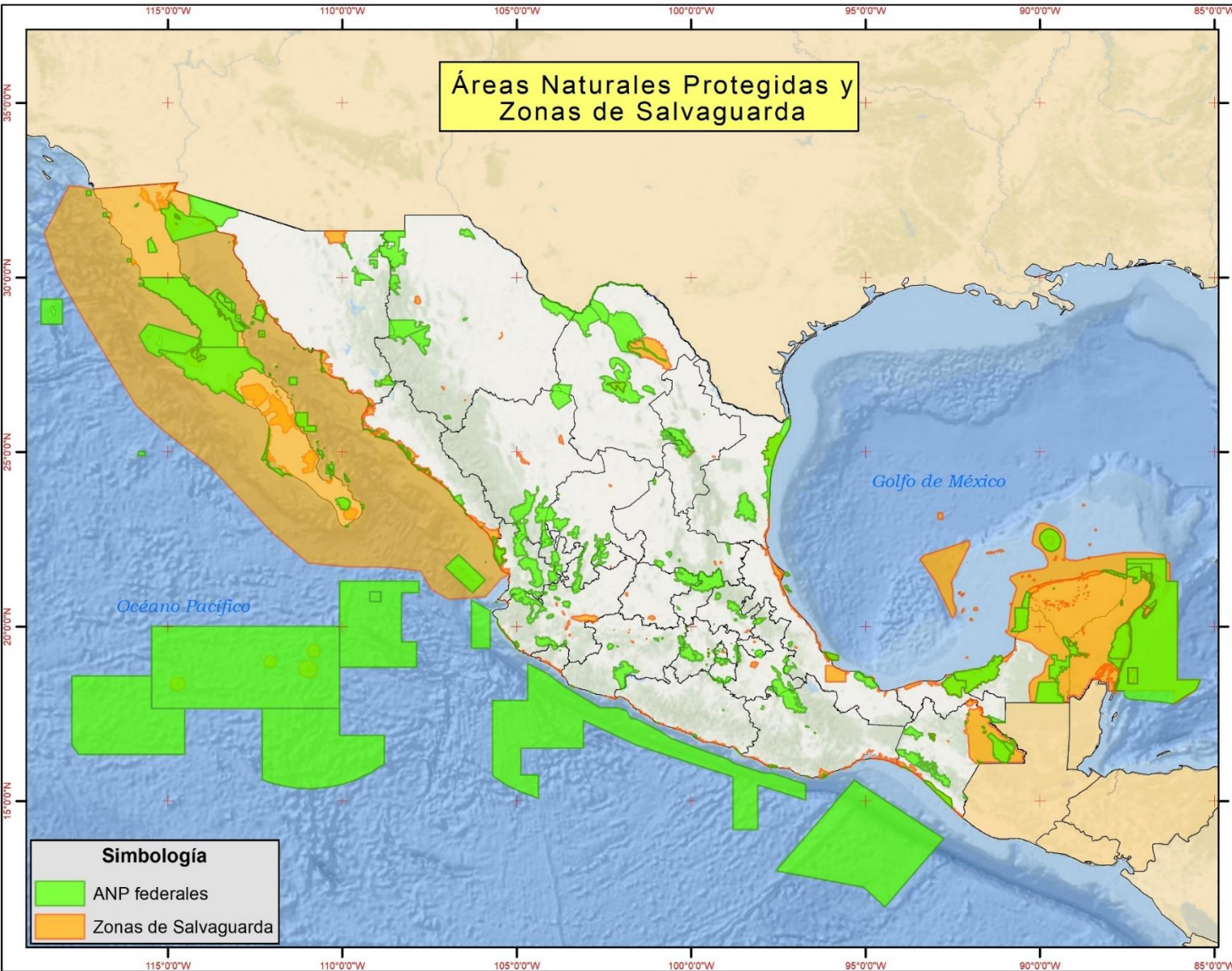
SEEA-EEA Mx and Natural Protected Areas (NPA)

- As part of the implementation of the SEEA EEA-Mx, a specific exercise is being carried out at the NPA level.
- The project is being developed jointly with the Commission of Natural Protected Areas (CONANP, in Spanish)
- In Mexico, NPAs are a fundamental instrument for biodiversity conservation



CONANP
COMISIÓN NACIONAL DE ÁREAS
NATURALES PROTEGIDAS





76 NPAs have been selected according to CONANP prioritization criteria

Two lines of work are proposed :

- Overview. Count the 76 NPA grouping similar ecosystems.
- Detailed view. Conduct particular studies of ecosystems for each NPA

Advances



OVERVIEW.

- Extent account. Years 2002, 2007, 2011 and 2014 using the Land Use and Vegetation Map
- Carbon in soil for the 76 selected NPAs, for one year of study



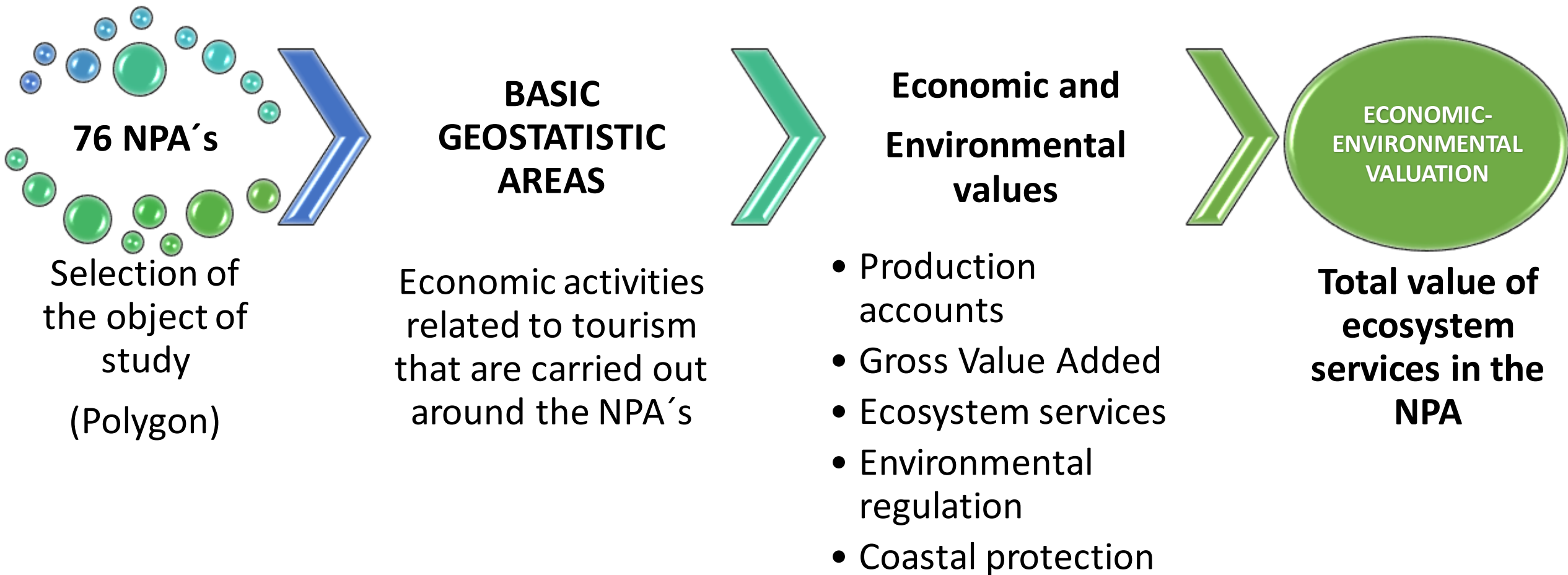
DETAILED VISION.

The framework of the Statistical and Geographic Information System (SNIEG) is used to carry out specific studies with the users of the information:



Specialized Technical Committee for Tourism.

- Measurement of Tourism Sustainability
- Follow-up to the SDG 8.9 Develop and implement policies aimed at promoting sustainable tourism that creates jobs and promotes local culture and products



Arrecifes Cozumel National Park

Relevant data

1.8 million annual tourists on average.

Only the **mangrove area** generates an economic value of **4.5 million dollars** per year

32.8 million dollars per year is the economic value of the **reefs** measured by protection against extreme weather events and contribution to the nutrient cycle

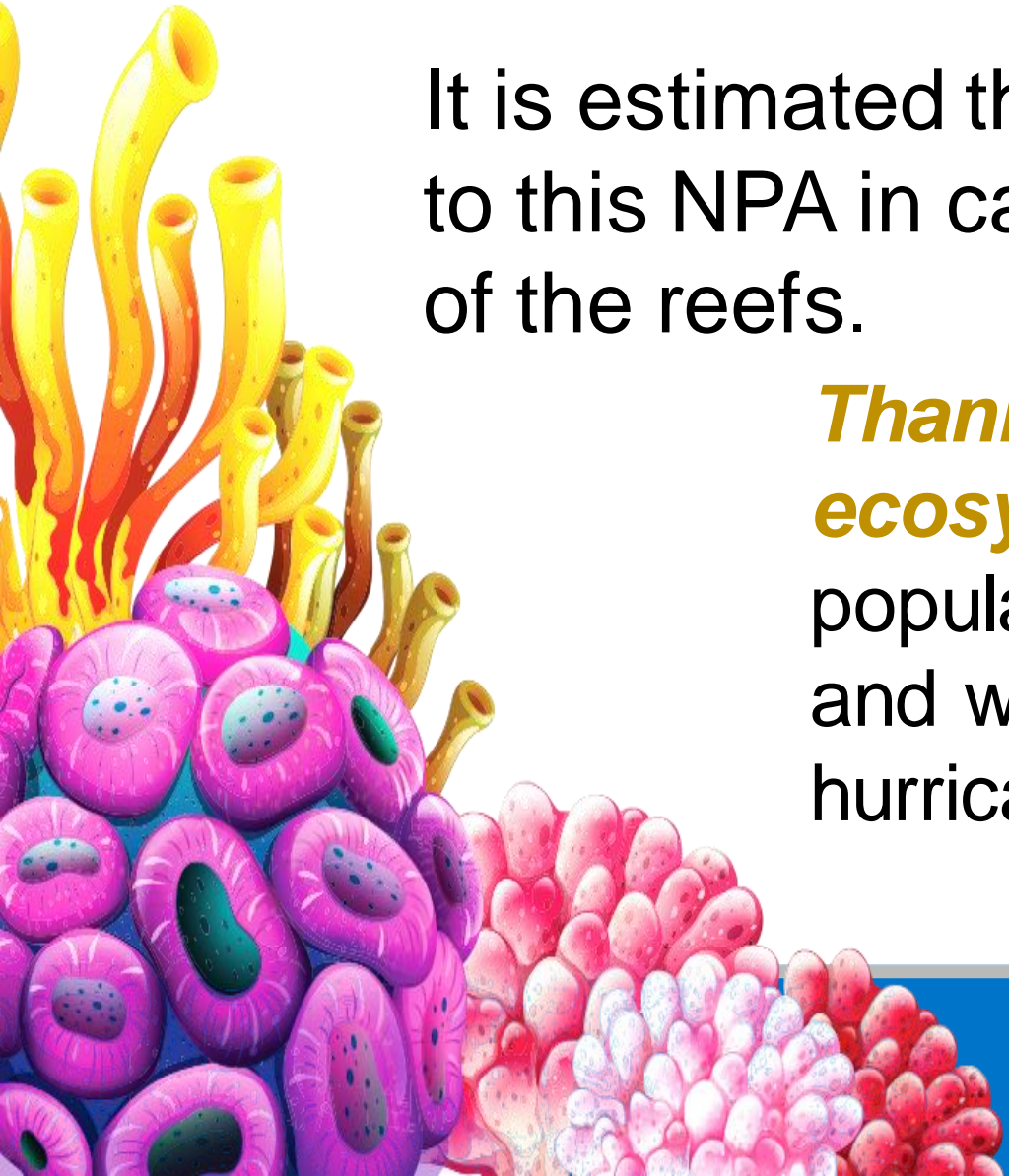






Arrecifes Cozumel National Park

Relevant data

It is estimated that **12% of visitors would stop going** to this NPA in case of continuing with the degradation of the reefs.

Thanks to the presence of marine-coastal ecosystems (reefs and mangroves) **65%** of the population of Cozumel is less vulnerable to floods and weather events such as storms and hurricanes



-  Accompaniment of the stakeholders, for the immediate use of the information generated
-  Include the opinion of scientists (academy, environmental sector, INEGI)
-  Integrate interdisciplinary knowledge (biologists, economists, geographers, among others)
-  Use polygons instead of buffer

Conociendo México

01 800 111 46 34

www.inegi.org.mx

atencion.usuarios@inegi.org.mx



INEGI Informa