

# Virtual Expert on Ecosystem Accounting

## Session on Ocean Accounts: Thailand

9 November, 2020

Presented by Ms. Kanjana Phumalee, NSO, Thailand

# 20-Year National Strategy Framework, Thailand



## 12<sup>th</sup> National Economic and Social Development Plan, Thailand



# Tourism Sustainability

## Stakeholders :

Need data for tourism sustainability for planning and management on over-tourism/carrying capacity including effect to environment and marine protected area.

## Reference areas :

Tourism Development Cluster Andaman (Phuket, Krabi, Phang Nga, Trang, Satun province)

Reference Year : 2016

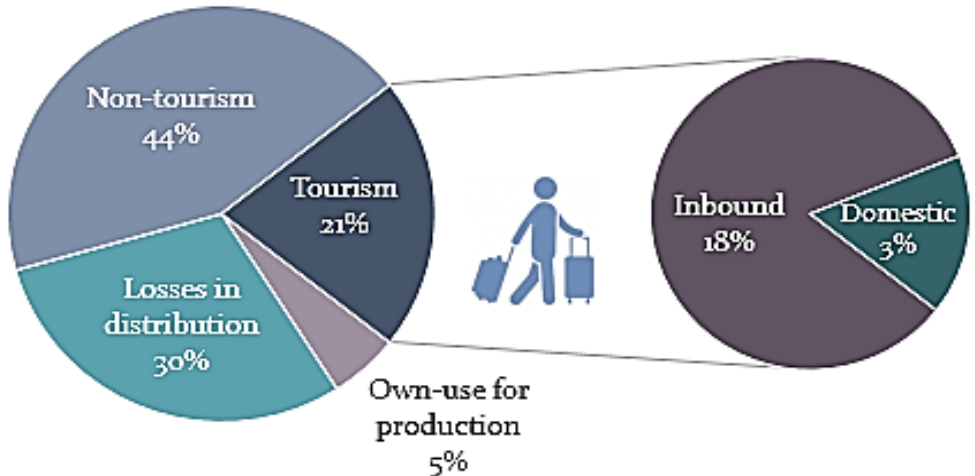
## Data sources

- Tourism Satellite Accounts (TSA) and I/O tables in the Andaman Tourism Development Cluster
- Research on SEEA-Blue economy from The National Center for Genetic Engineering and Biotechnology (BIOTEC)
- Official statistics, Geo Spatial data including land use data form related agencies



# Major results

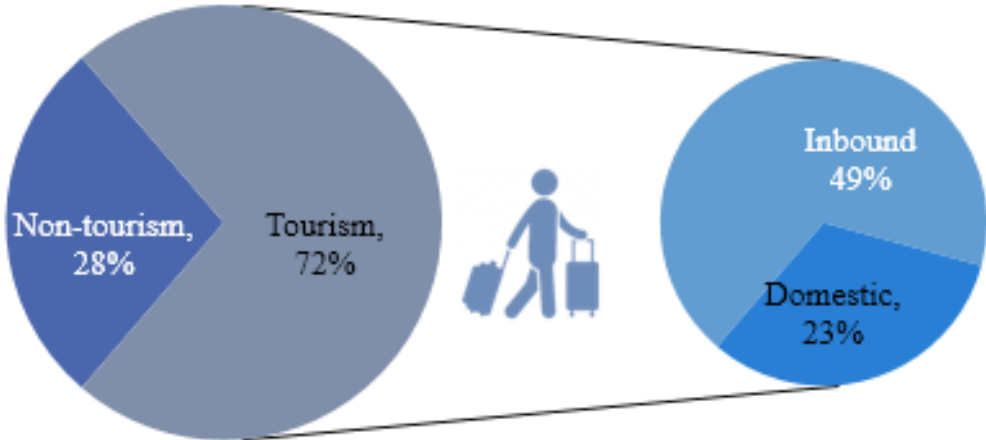
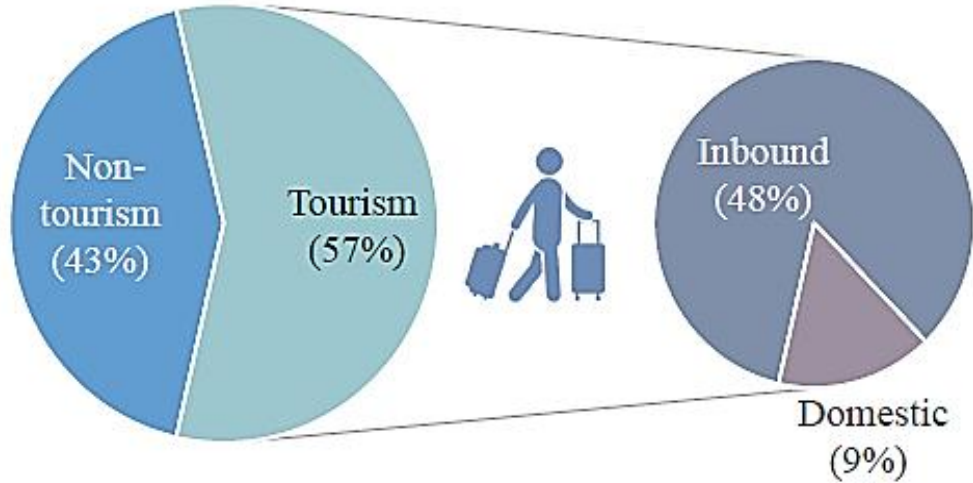
## Water



## Waste






## Energy

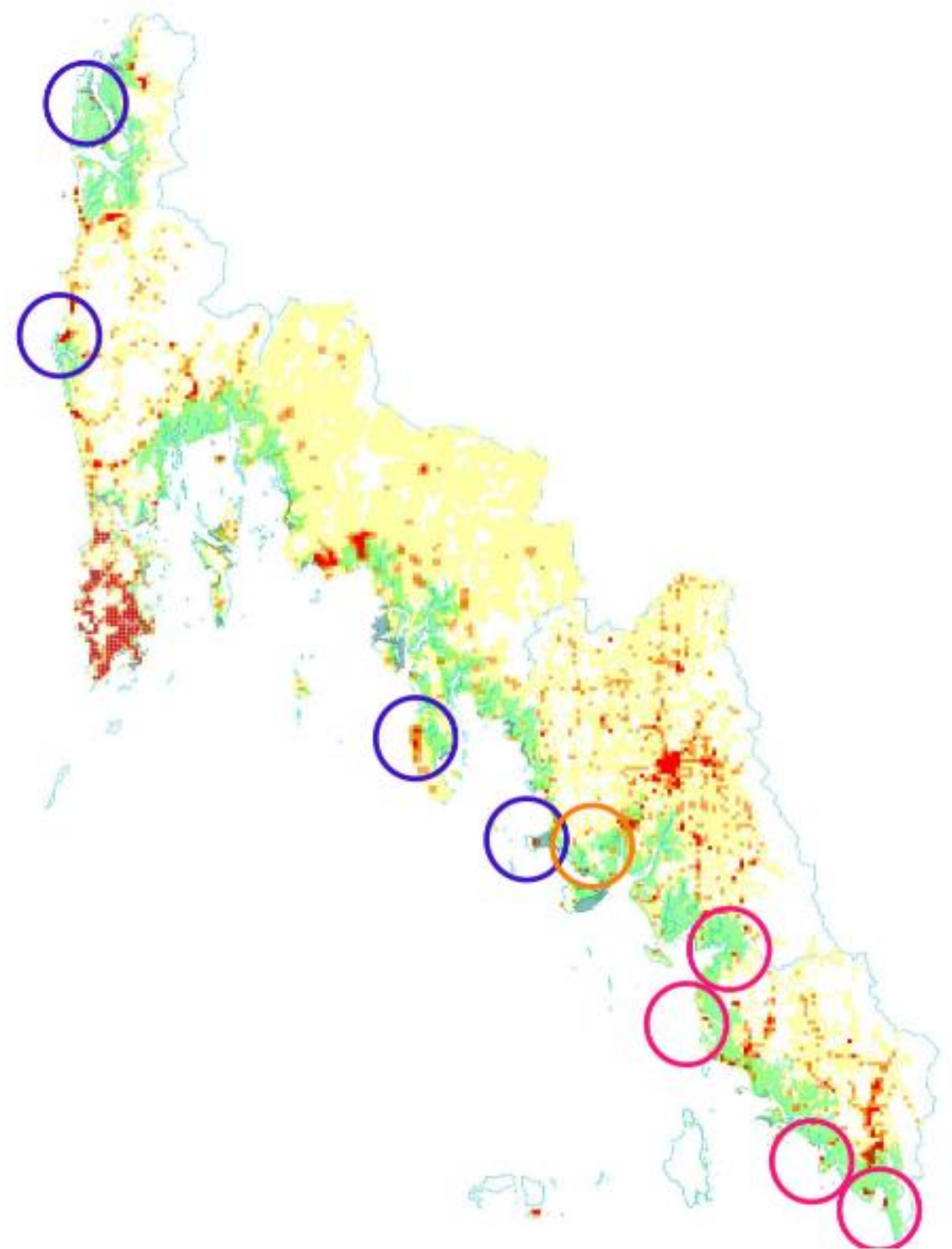


# Major results

## Risk areas of over carry capacity tourism, in Andaman Cluster, 2016

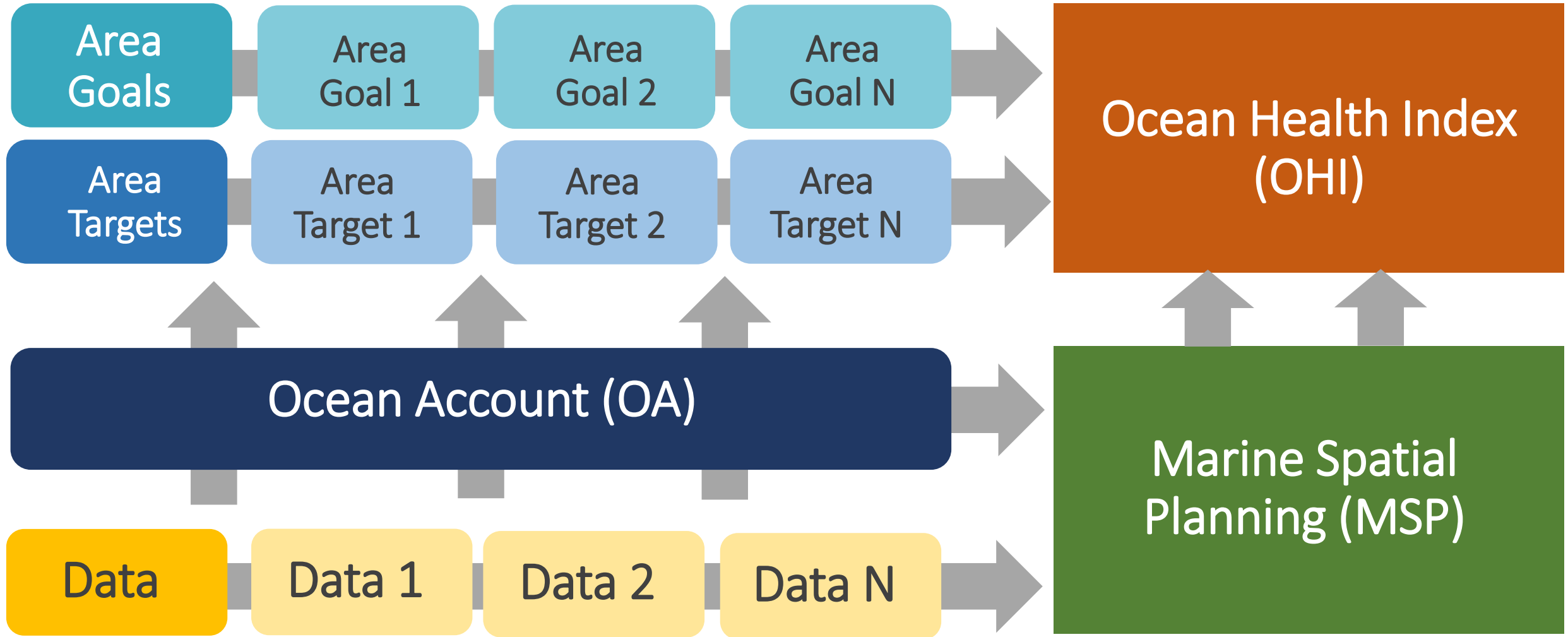
### Risk area ranking criteria

-  Density of population > 900 capita / Km<sup>2</sup> and properly waste collection, treatment and disposal < 50% and 3 types of natural resource
-  Density of population > 900 capita / Km<sup>2</sup> and properly waste collection, treatment and disposal < 50% and 2 types of natural resource
-  Density of population > 900 capita / Km<sup>2</sup> and properly waste collection, treatment and disposal < 50% and 1 types of natural resource



# Pilot Project on the Integration of Ocean Account, OHI+ and MSP, at Ao Phang Nga, Thailand

---



An underwater photograph showing a vast school of small fish swimming in a circular pattern. A diver is visible in the center, swimming upwards. Sunlight rays penetrate the water from above, creating a bright, ethereal atmosphere. The bottom of the frame shows a dark, rocky seabed.

Thank you!