

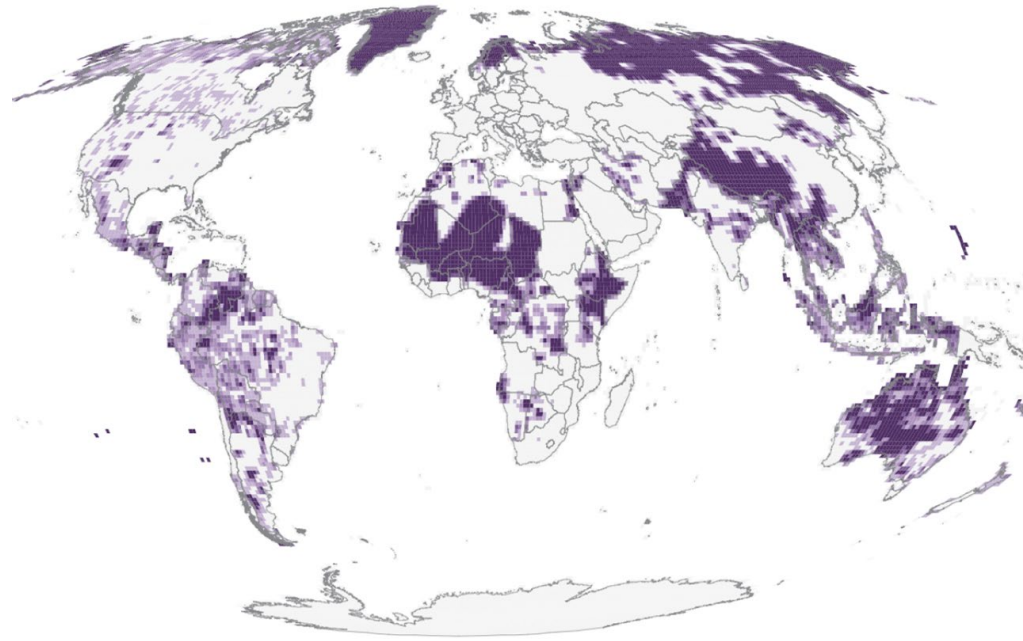
Accounting for Indigenous perspectives in SEEA-EA in theory and practice

Anna Normyle^a, Bruce Doran^a, Michael Vardon^a, Dean Mathews^b and Julie Melbourne^b

^a Fenner School of Environment and Society, Australian National University

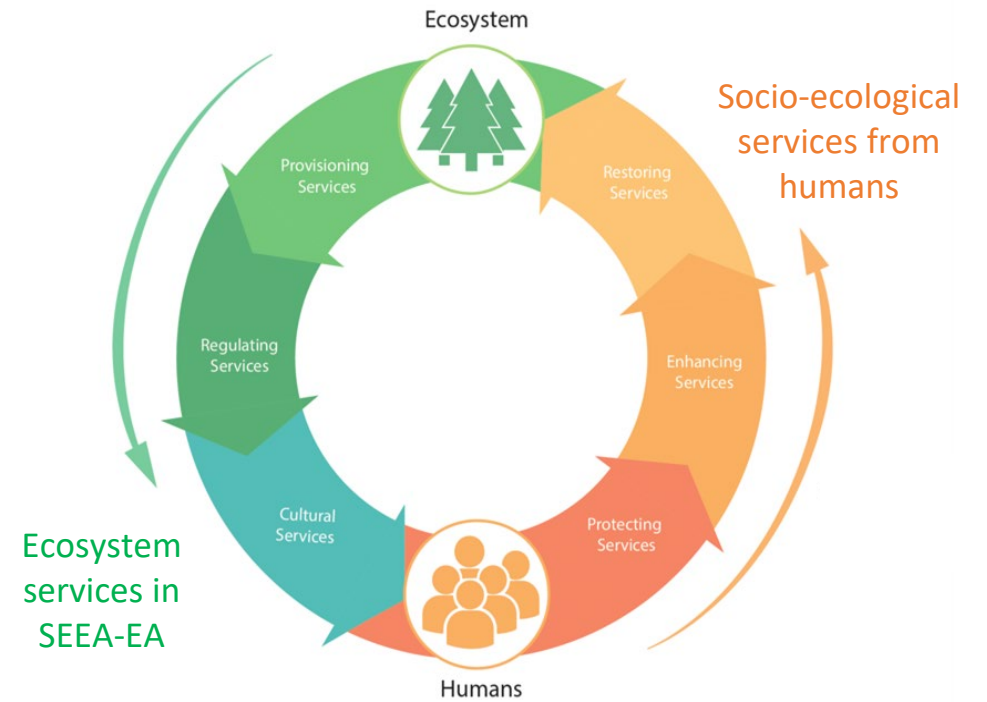
^b Nyamba Buru Yawuru, Broome, Western Australia

We acknowledge the Yawuru people, the Traditional Custodians of the lands and waters in and around Rubibi (the town of Broome, Western Australia). We acknowledge and respect their continuing culture and contribution to this research project.



(A) Indigenous tenure globally (Garnett et al. 2018)

- Indigenous perspectives important to consider in account development at various scales
- Developed & assessed pilot land cover and fire accounts with Indigenous managers
- Scope for supporting management of Country. Need to consider: services to ecosystems, relational values



(B) Services to ecosystems (adapted from Comberti et al. 2015)

- Is there any other research activity examining Indigenous cultural assets?
- Do you agree that humans defined characteristics should be considered as part of ecosystem assets?
- How could the cultural services from humans to ecosystems be considered in the SEEA-EA?