

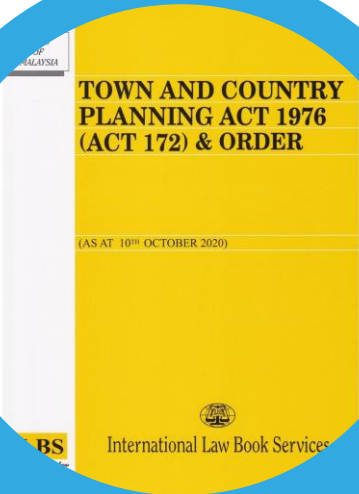
INTEGRATED DATA MANAGEMENT FOR LAND USE IN NATION'S POLICY MAKING

TPr Jasmiah Ismail

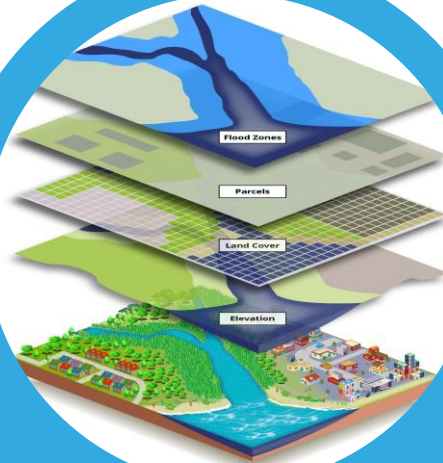
Deputy Director Development, PLANMalaysia

27th August 2021

PRESENTATION OUTLINE



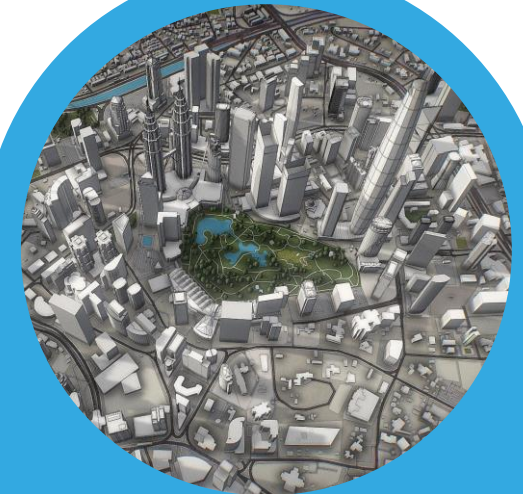
1.0
**SPATIAL AND LAND USE
PLANNING SYSTEM IN
PENINSULAR MALAYSIA**



2.0
**INTEGRATED NATIONAL
DEVELOPMENT PLANNING
FRAMEWORK**



3.0
**I-PLAN: INTEGRATING
DATA MANAGEMENT FOR
LAND USE**



4.0
CONCLUSION

1.0 SPATIAL AND LAND USE PLANNING SYSTEM IN PENINSULAR MALAYSIA

LAWS
OF
MALAYSIA

TOWN AND COUNTRY PLANNING ACT 1976 (ACT 172) & ORDER

(AS AT 10TH OCTOBER 2020)



ILBS

Trusted Name In Law

International Law Book Services

FEDERAL GOVERNMENT

S6B
Act 172

NATIONAL
PHYSICAL
PLAN

- Negotiated with State Authority
- Approved by National Physical Planning Council
- Prepared by Director General of Town and Country Planning (PLANMalaysia)

STATE GOVERNMENT

S7 – 11
Act 172

STATE
STRUCTURE
PLAN

- Approved by State Planning Committee
- Prepared by State Director of Town and Country Planning

LOCAL AUTHORITY

S12 – 16A
Act 172

LOCAL PLAN

- Approved by State Planning Committee
- Prepared by Local Planning Authority

S16B
Act 172

SPECIAL AREA
PLAN

- Approved by State Planning Committee
- Prepared by State Director/Local Planning Authority

2.0 INTEGRATED NATIONAL DEVELOPMENT PLANNING FRAMEWORK

INTERNATIONAL AGENDA



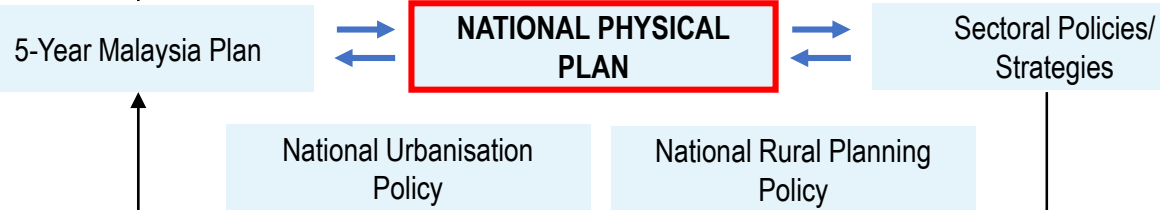
THE GLOBAL GOALS



IMPLEMENTING THE NEW URBAN AGENDA

SHARED PROSPERITY VISION 2030

LEVEL 1: NATIONAL PLANNING



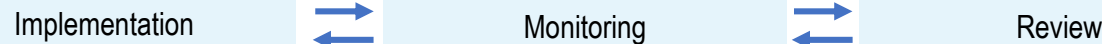
LEVEL 2: REGIONAL/STATE PLANNING



LEVEL 3: LOCAL PLANNING



IMPLEMENTATION



3.0 I-PLAN: INTEGRATING DATA MANAGEMENT FOR LAND USE



<http://iplan.planmalaysia.gov.my>



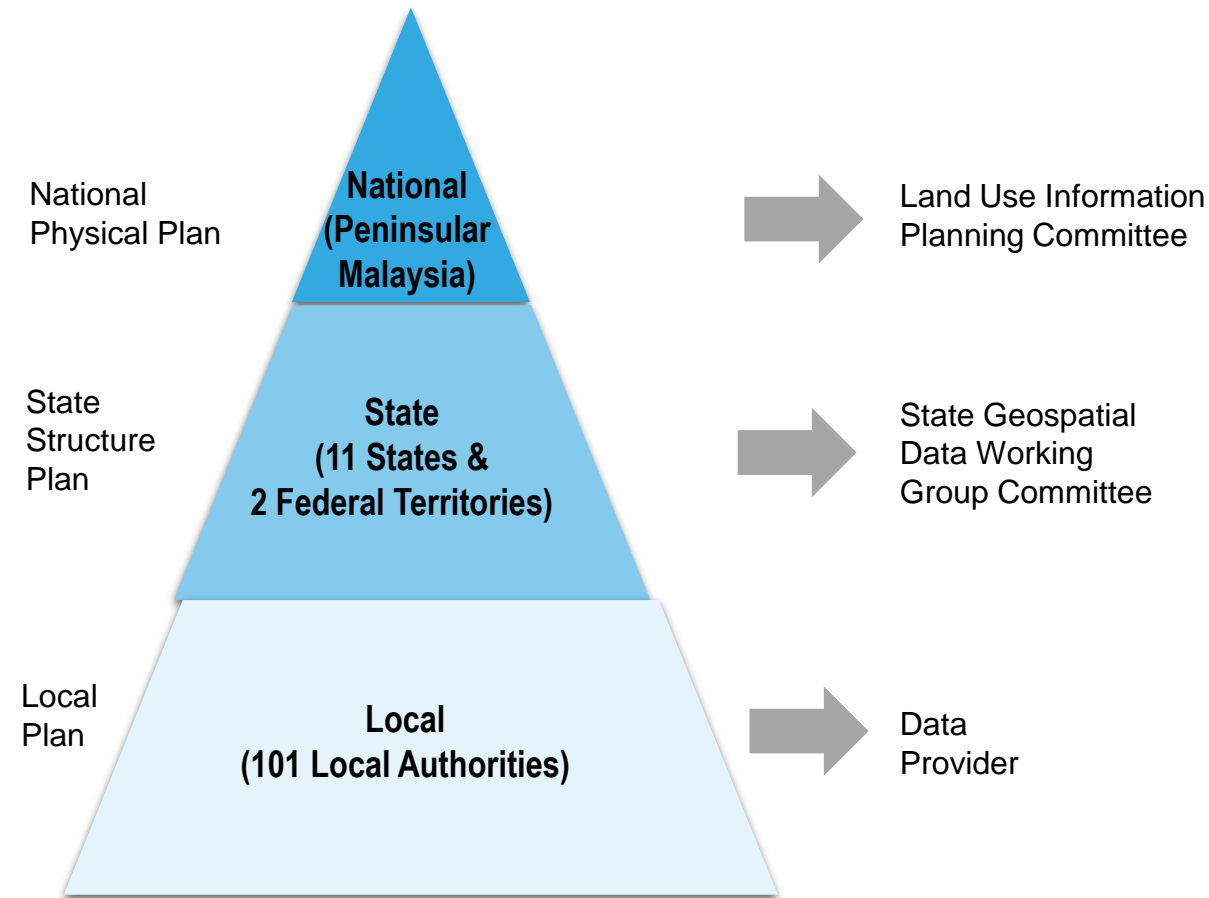
Integrated Land Use Planning Information System (I-Plan) is an **integrated** database system to **manage, store** and **update** land use data systematically throughout the country.

3.0 I-PLAN: INTEGRATING LAND USE DATA MANAGEMENT

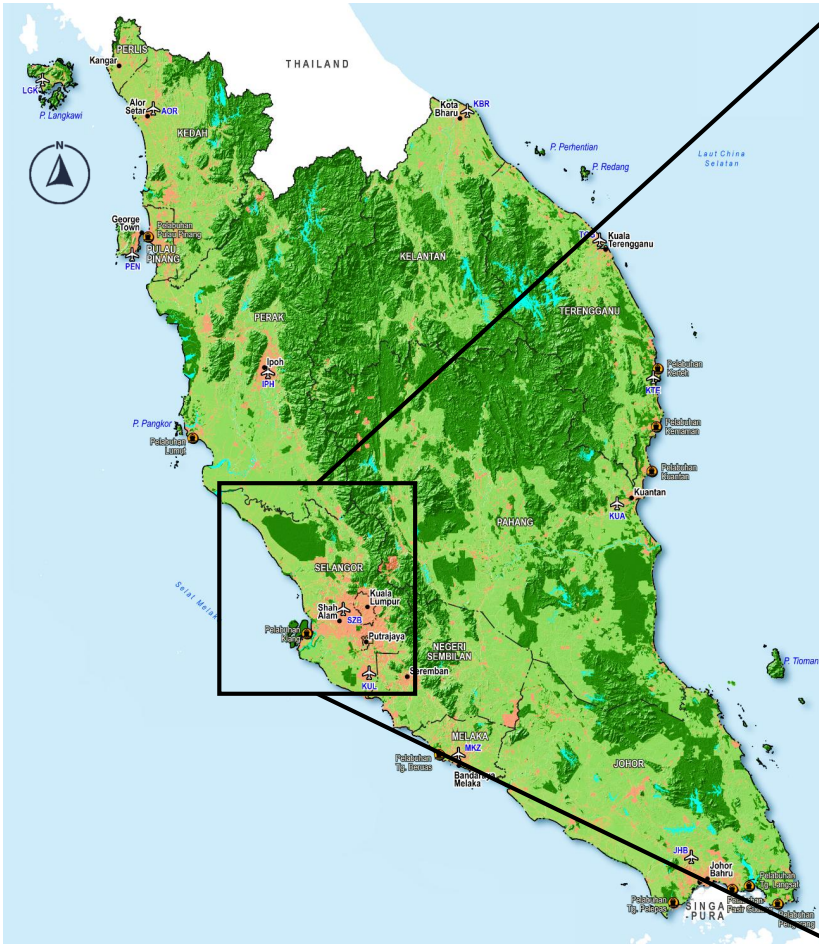
1. I-Plan is a **systematic process** in managing, storing and updating land use planning data.
2. Land use data is updated twice a year; between January and June, and between July and December involving 11 states, 2 federal territories and 101 local authorities in Peninsular Malaysia.



SEAMLESS LAND USE DATA

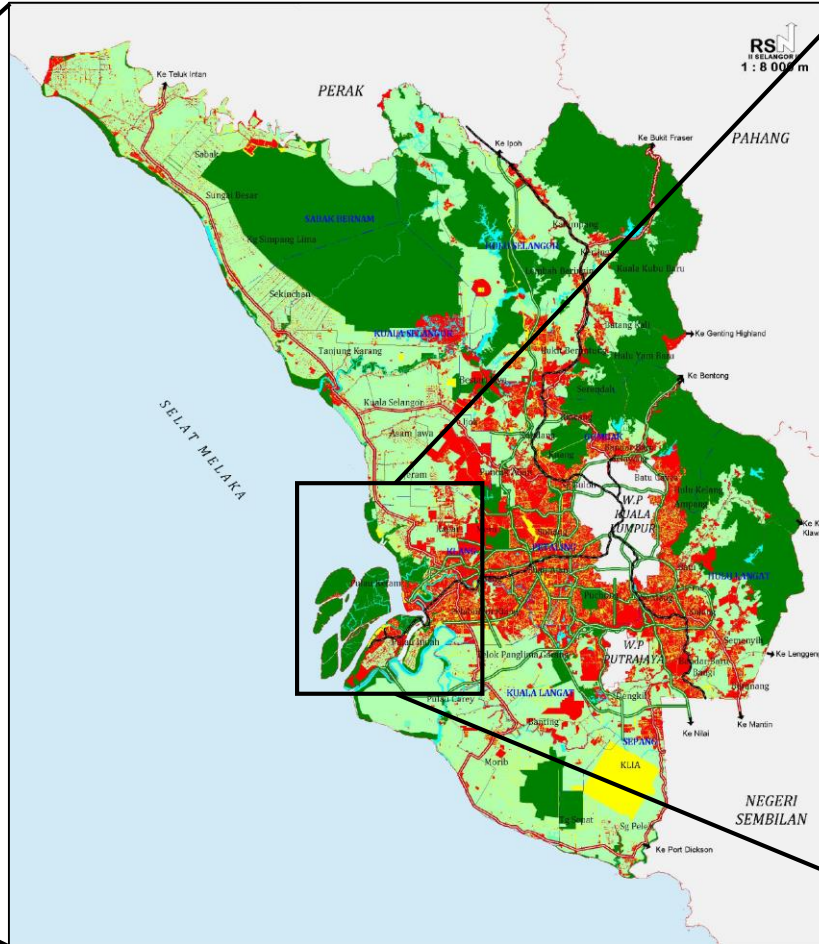


LEVEL 1: NATIONAL LEVEL (NATIONAL PHYSICAL PLAN)



- Built Up
- Agriculture
- Forest
- Waterbody

LEVEL 2: STATE LEVEL (STATE STRUCTURE PLAN FOR SELANGOR)



- Built Up
- Transportation, Infrastructure & Utility
- Agriculture
- Forest
- Waterbody

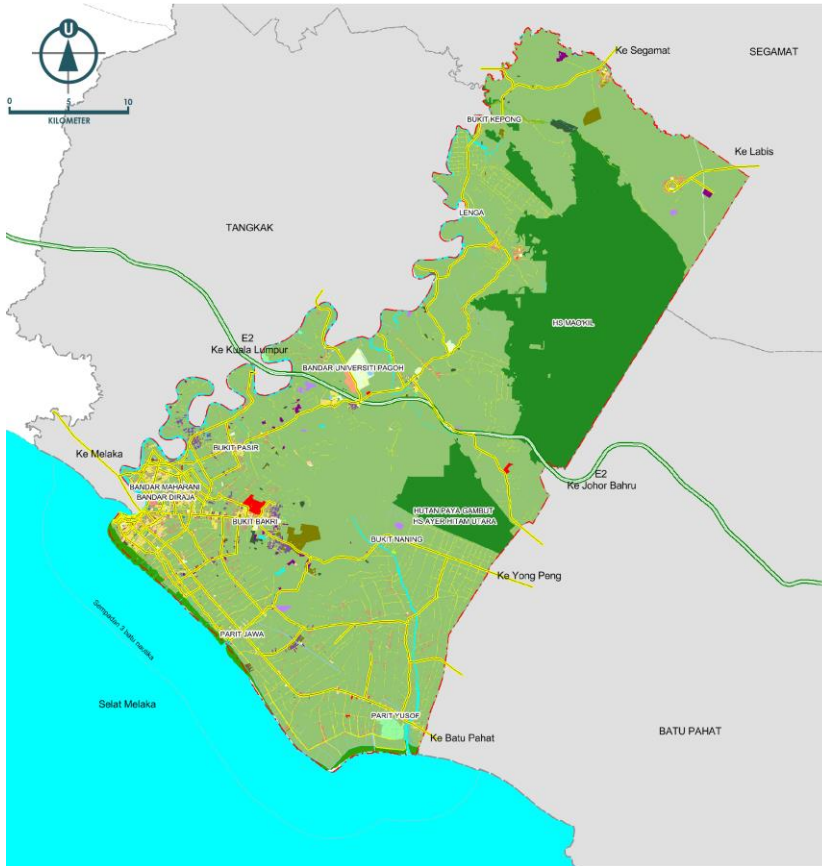
LEVEL 3: LOCAL LEVEL (LOCAL PLAN FOR KLANG)



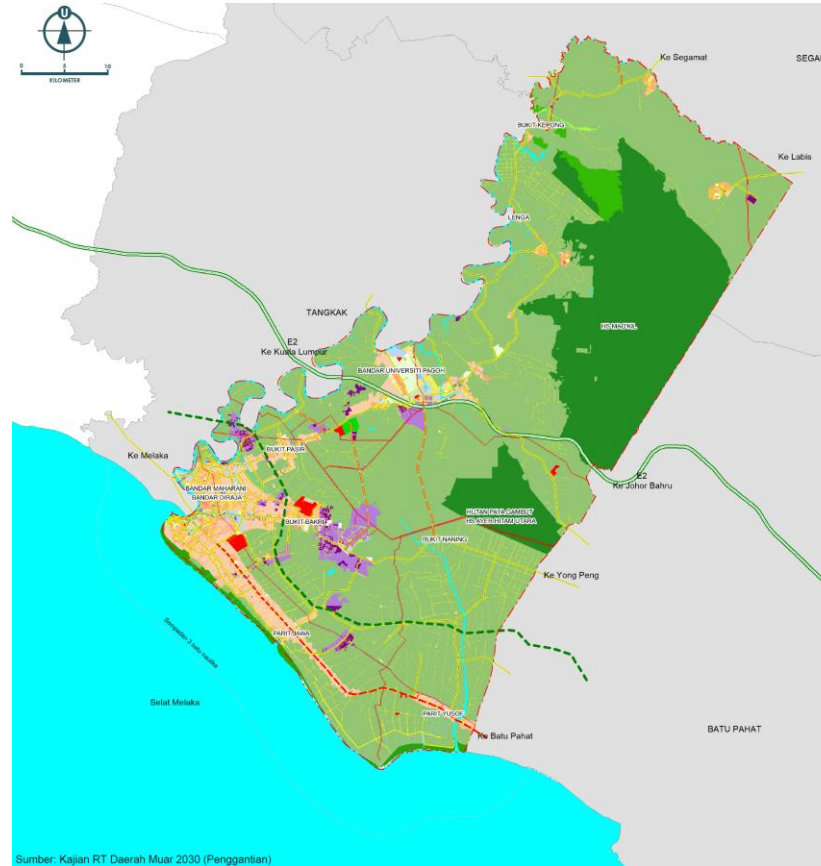
- | | |
|---|--|
| Residential | Open Space and Recreation |
| Commercial | Transportation |
| Industry | Livestock and Aquaculture |
| Institution and Public Amenity | Agriculture |
| Infrastructure and Utility | Forest |
| Vacant Land | Waterbody |

LOCAL PLAN FOR MUAR

EXISTING LAND USE

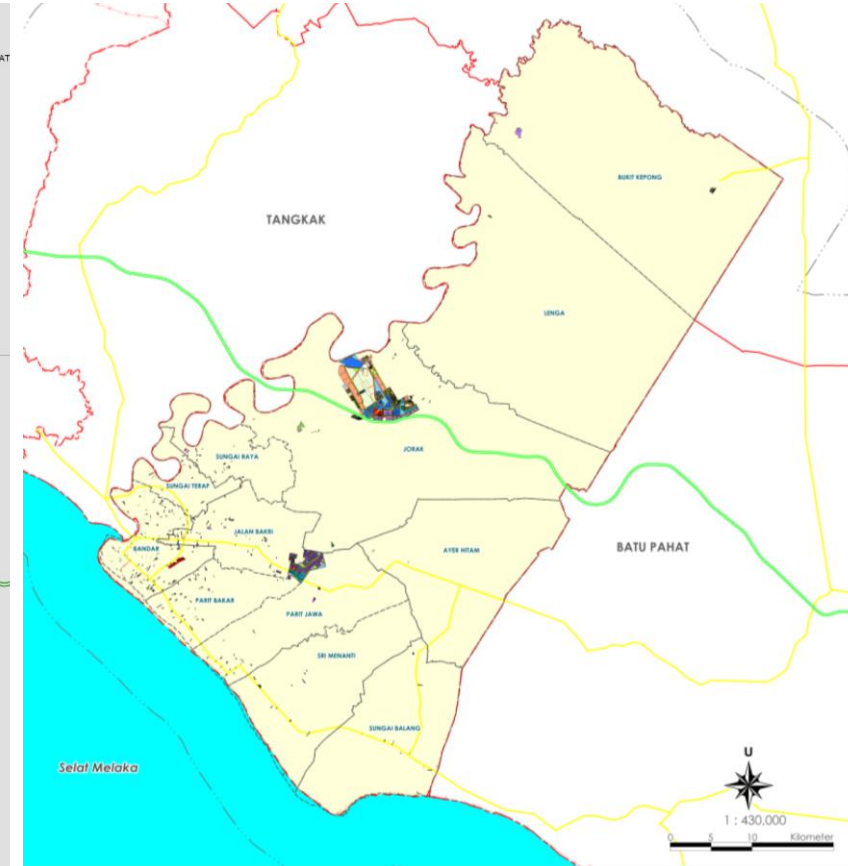


LAND USE ZONING



Sumber: Kajian RT Daerah Muar 2030 (Penggantian)

COMMITTED LAND USE



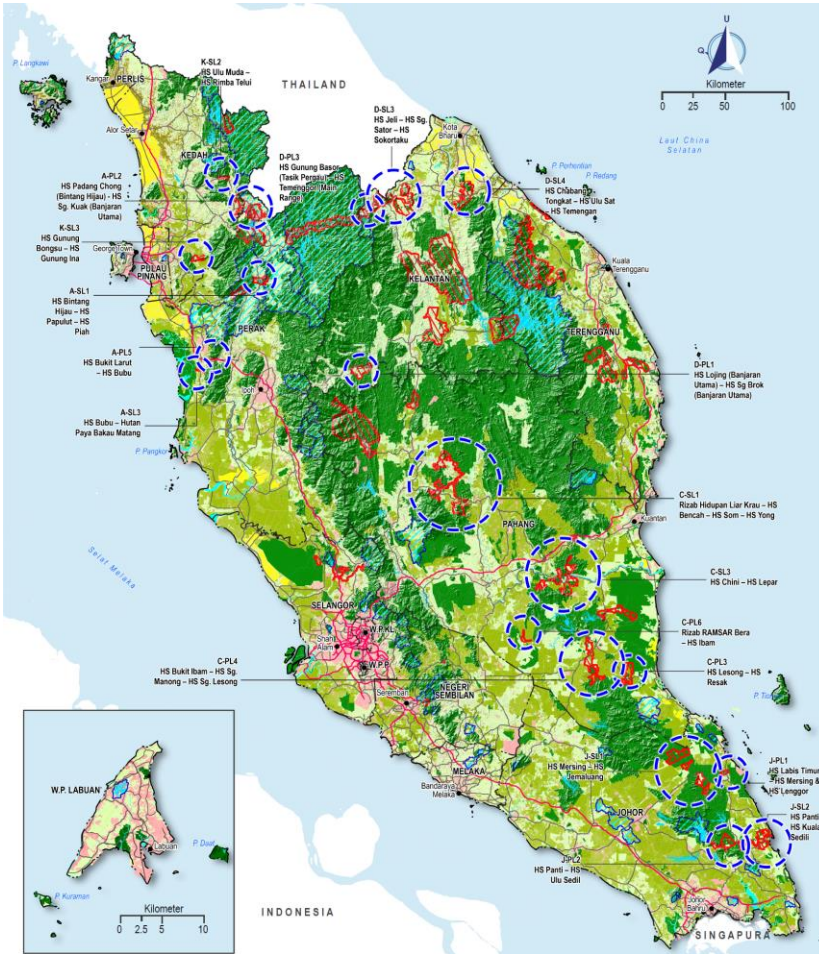
- Residential
- Commercial
- Industry
- Institution and Public Amenity
- Infrastructure and Utility
- Vacant Land
- Open Space and Recreation
- Transportation
- Livestock and Aquaculture
- Agriculture
- Forest
- Waterbody

- Residential
- Commercial
- Industry
- Institution and Public Amenity
- Infrastructure and Utility
- Vacant Land
- Open Space and Recreation
- Transportation
- Livestock and Aquaculture
- Agriculture
- Forest
- Waterbody

- Residential
- Commercial
- Industry
- Institution and Public Amenity
- Infrastructure and Utility
- Vacant Land
- Open Space and Recreation
- Transportation
- Livestock and Aquaculture
- Agriculture
- Forest
- Waterbody

ENVIRONMENTAL SENSITIVE AREA (ESA)

ESA FOR PHYSICAL PLAN

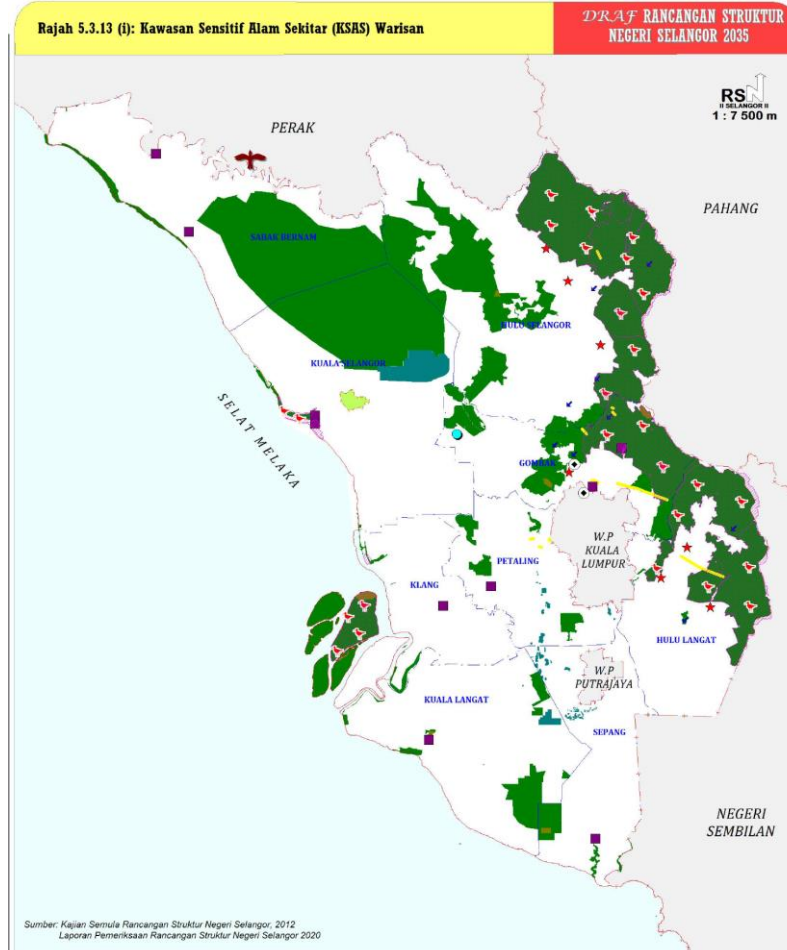


PELAN 3-8: STRATEGI PENGURUSAN SUMBER SEMULA JADI SEMENANJUNG MALAYSIA DAN W.P. LABUAN

- | | | | |
|----------------------------|------------------------------|-------------------------|-------------------|
| Sumber Semula Jadi | Sumber Tenaga | Lain-lain Sumber | Lain-lain |
| ● Kawasan Berhutannya | — Sungai | ● Tepu Bina | — Ibu Negeri |
| ● Koridor Ekologi | ● Tanaman Kelapa Sawit | ● Lebuhraya | — Jalan Raya |
| Sumber Semula Jadi | Sumber Makanan | ● Pertanian | — Sempadan Negeri |
| ● Kawasan Tadahan Empangan | ● Jelapang Padi Negara | ● Badan Air | |
| | ● Tanaman Padi Luar Jelapang | | |

Sumber:
 • Jabatan Perhutanan SM, 2018
 • Jabatan Pertanian, 2018
 • Rancangan Struktur Negeri
 • Rancangan Fizikal Negara Ke-4, 2020

ESA FOR STATE STRUCTURE PLAN



Sumber: Kajian Semula Rancangan Struktur Negeri Selangor, 2012
 Laporan Pemeriksaan Rancangan Struktur Negeri Selangor 2020

Petunjuk:

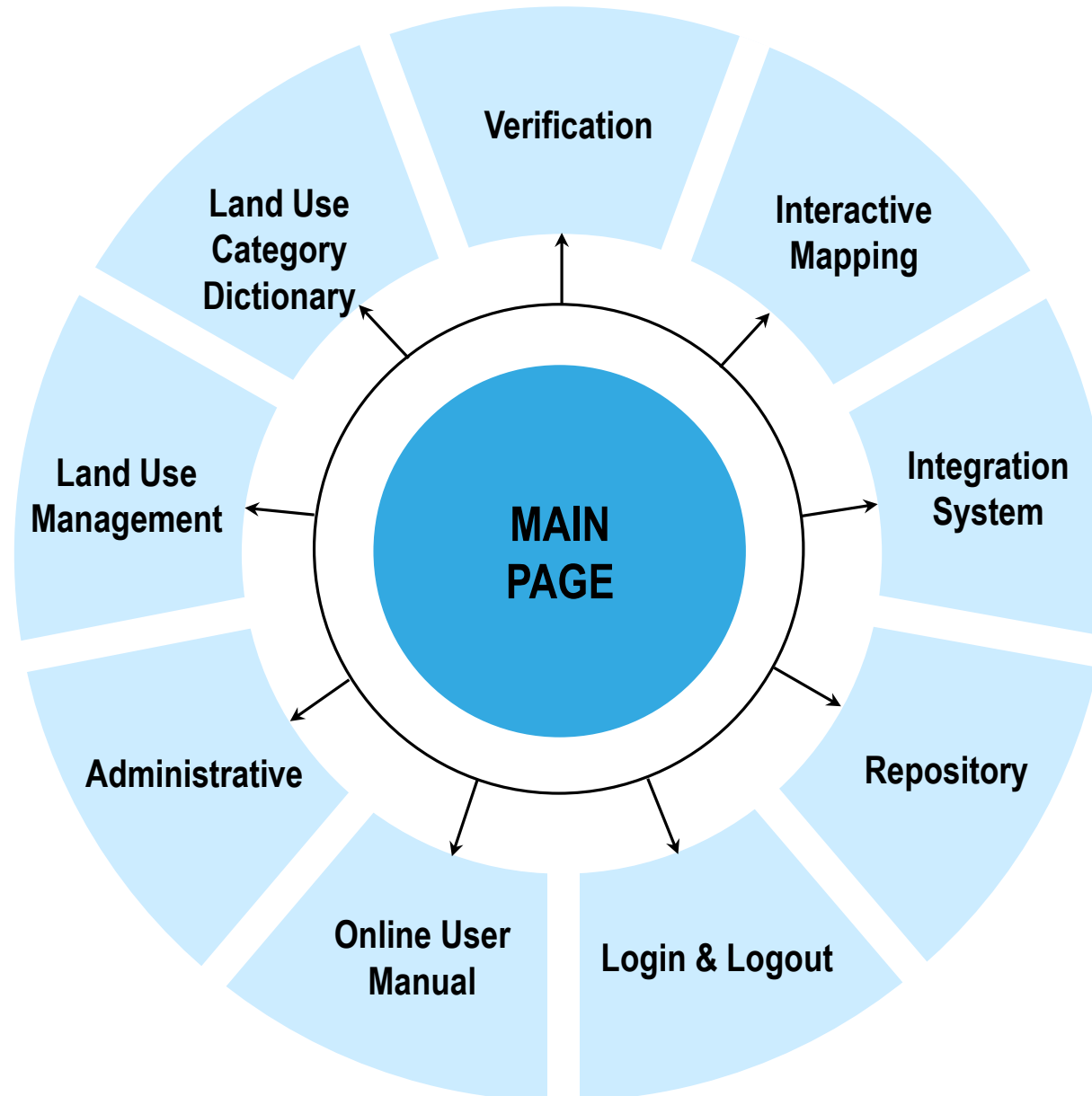
- | | | |
|---------------------------------|--------------------------|-------------------|
| ■ Sejarah dan Arkeologi | ✦ Habitat Burung Enggang | — Sempadan Daerah |
| ✦ Kawasan Berkepentingan Burung | ✦ Kawasan Air Terjun | — Sempadan Negeri |
| ■ Hutan Simpanan Kekal | ★ Mata Air Panas | |
| ■ Hutan Dara | | |
| ■ Tasik | | |
| ■ Kg Kuantan dan Kg Belimbing | | |
| ■ Permatang Kuarza | | |

ESA FOR LOCAL PLAN



Rajah B2-22: Kawasan Sensitif Alam Sekitar
 Sumber: Kajian RTMPK 2035 (Penggantian)

i-plan APPLICATION MODULES



BENEFITS OF I-PLAN

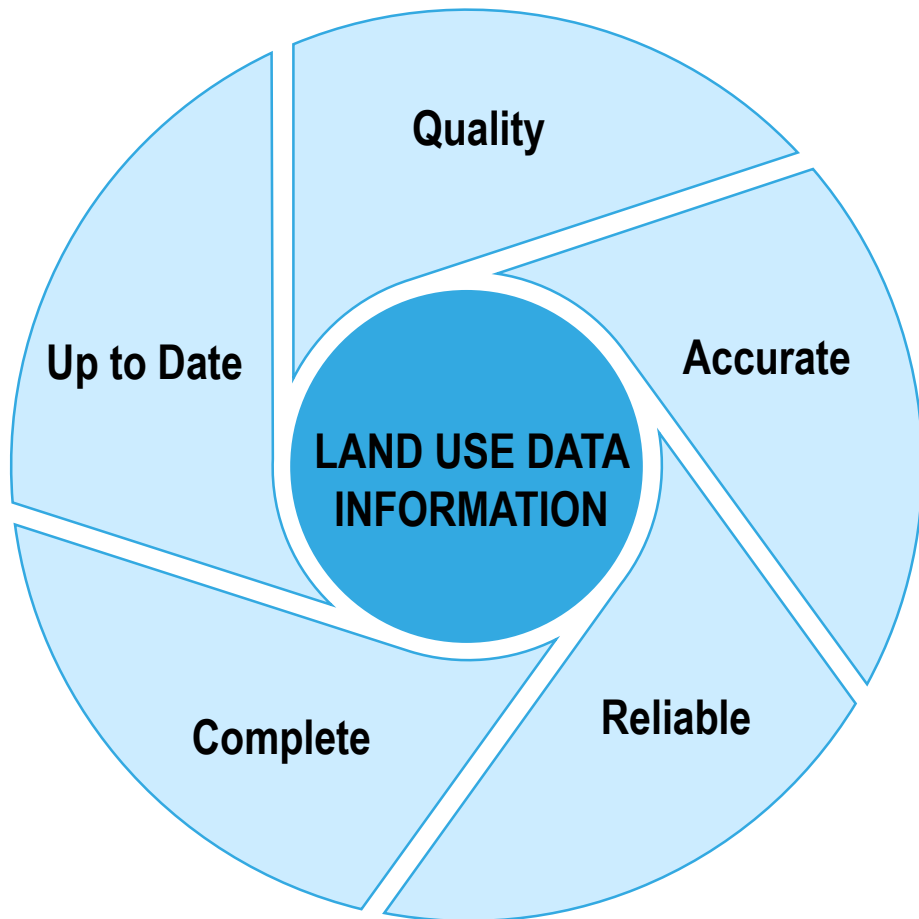
1. **Easy** to access
2. **Up-to date** land use information
3. **Seamless** land use data from national, state and local level
4. **Monitor** & control land use activities more **effectively**
5. **Improve** quality of government services delivery
6. **Save** time & **reduce** cost
7. Data **sharing**

ANALYTICAL TOOLS IN **i-plan**

- **Facilitate decision-making** and also to **monitor land use changes** in the country.
- **Determine land availability** and **suitability** for development.
- Generate statistical information, maps and charts of all twelve (12) categories of land use for analytical purposes.



1. Land use data information.




2. Lack of GIS skills and manpower at PLANMalaysia @ States/ Local Authorities



3. Commitment of all parties.




4.0 CONCLUSION

An illustration featuring three vertical cylinders of different colors (green, blue, and yellow) on the left. Below them is a funnel with a grid of small squares falling into it. The background is light blue with faint gear icons.

I-Plan is an **integrated data base** system to manage, store and update land use data.

An illustration of a diverse group of people sitting around a table in a meeting, looking at documents and a laptop. The background is light blue.

I-Plan provides the **mechanism** for land use planning **decision making**.

An illustration showing several hands of different colors (red, yellow, blue, grey) holding a large, multi-layered blue gear. The background is light blue.

I-Plan **supports** the System of Environmental Economic Accounts (SEEA) project in Malaysia in terms of land use data input.

Thank You



PLANMalaysia
Perancangan Melangkaui Kelaziman
Planning : Beyond Conventional

