

Landscape Approach to Riverine Forest Restoration, Biodiversity Conservation and Livelihood Improvement - Sudan



The Objective

Target landscapes



The Challenge

Interventions

The Objective

- Restore and maintain critical ecosystem services of globally significant riverine forest landscapes along the River Nile in Sudan



50,878 ha of riverine forest ecosystems managed to benefit biodiversity and maintain productive value.

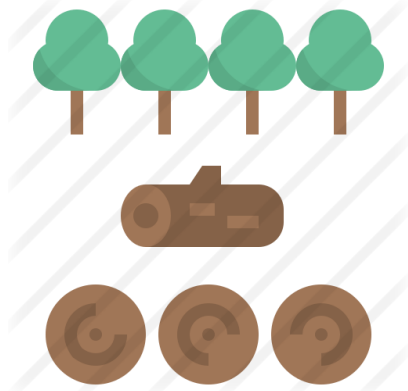


20,000 smallholders and private producers (10,000 female/10,000 male) reporting stable or improved standard of living resulting from biodiversity conservation mainstreaming

The Challenge



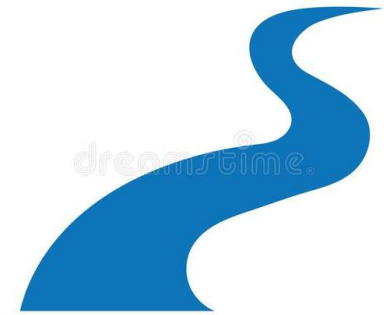
*Agricultural Expansion
and Irrigation*



*Unsustainable Harvest of
timber and NTFPs*



Climate Change



Nile River Flow



Habitat Alteration



Loss of livelihoods



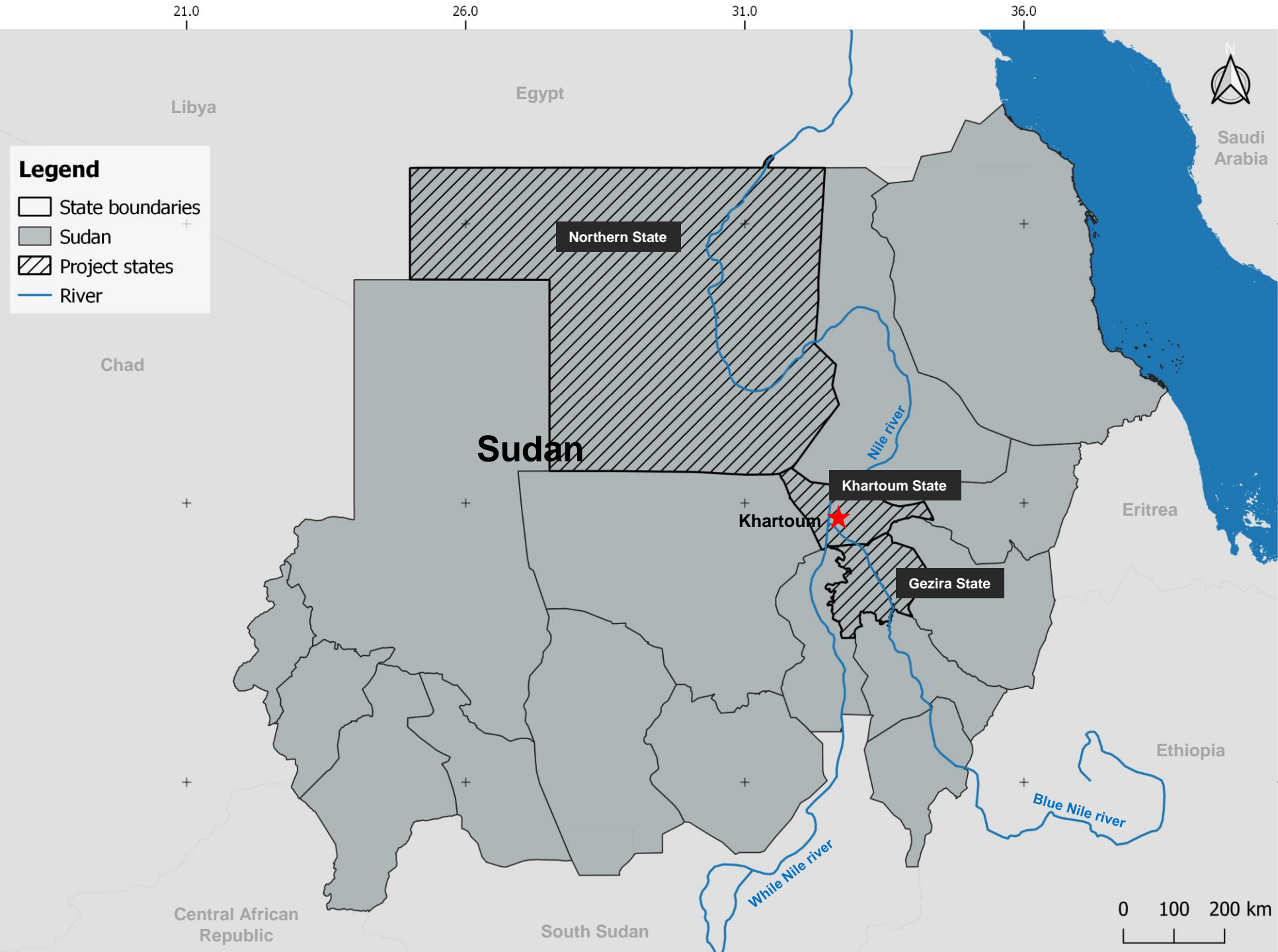
Food security



*Innovative NRM
approaches*

Legend

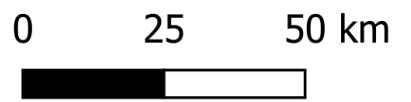
- State boundaries
- Sudan
- Project states
- River

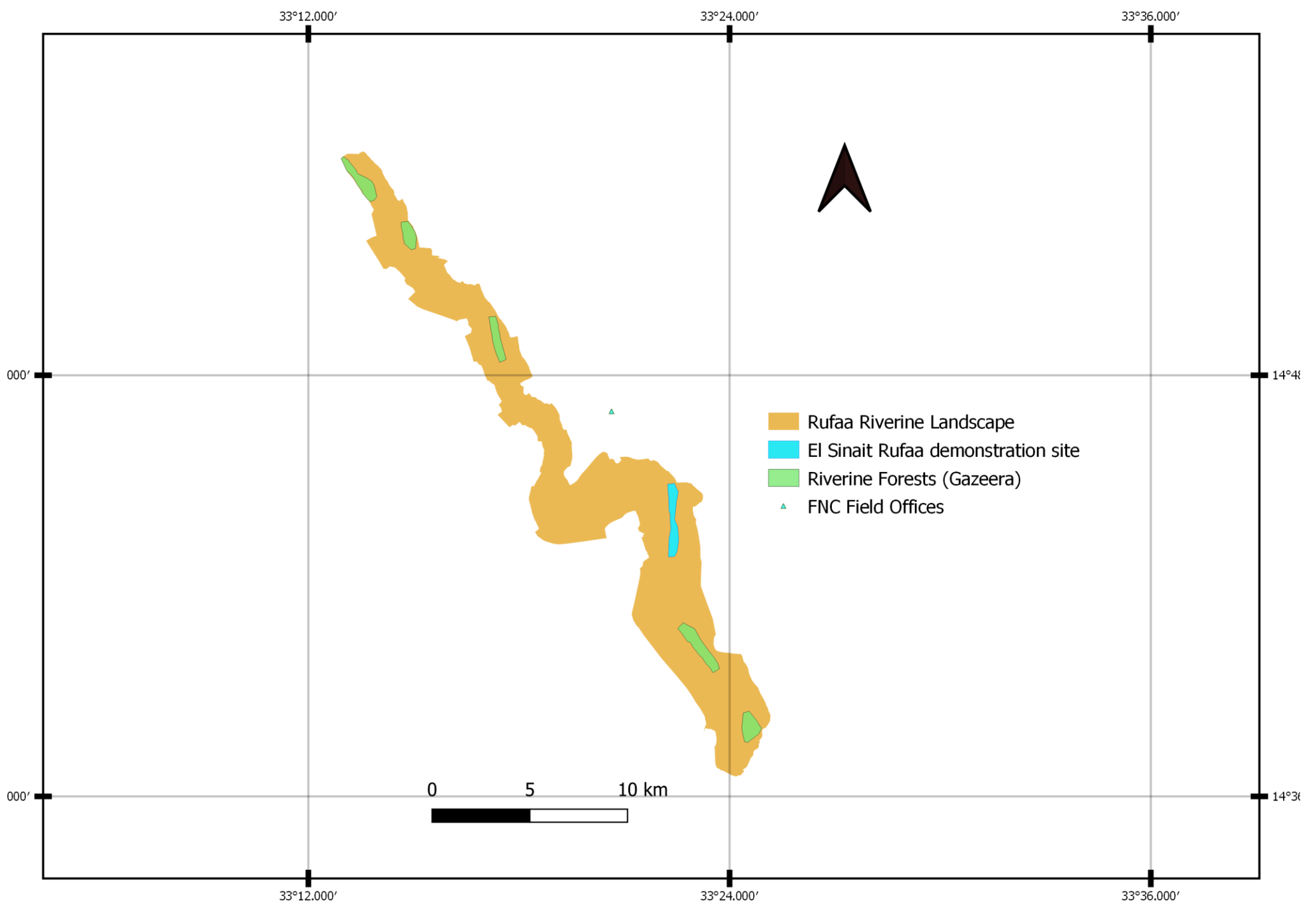


Target Landscapes



-  Gazeera State
-  Rufaa Riverine Landscape
-  Wad Madani Riverine Landscape
-  Haj Abdallah Riverine Landscape
-  Riverine Forests (Gazeera)
-  Riverine Forests (Sennar)
-  FNC Field Offices









السط

Victory Bridge

Central Bank of Sudan
بنك السودان المركزي

Friendship Hall
قاعة الصداقة

Al Neelain University
جامعة النيلين

Khartoum Garden
الحديقة النباتية

52nd St

Alsal

Al-Gandool

Sudan University
Of Science &
Technology
جامعة السودان
للعلوم
والتكنولوجيا
الغابية

Al Sunut
Forest
غابة السط

Al-Ghaba Ave

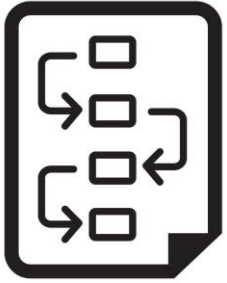
National gas station
محطة نفود الوطنية

شبكة حديد

each
رواق

White Nile

Interventions



Planning

- Ecological, social and economic assessments of riverine ecosystems
- Updates Forest Reserve management plans
- Spatial planning and Community action plans



Demonstration

- Biodiversity conservation training programs
- Conservation and restoration demonstration program



*Informed Decision
Making*

- Ecosystem-based monitoring and knowledge management
- Improved institutional frameworks to sustain and amplify results

Thank you

