

Regional Training Workshop on the
SEEA Ecosystem Accounting – Day 3

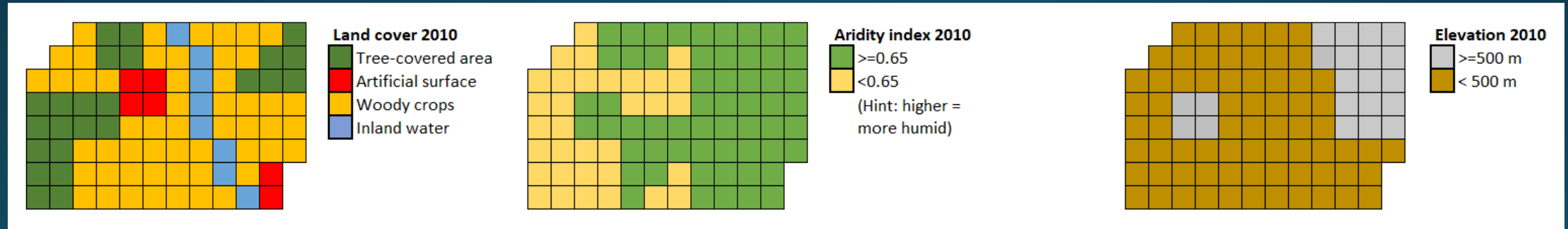
Geospatial Data Assessment Template

Blanca Perez-Lapena, PhD

June 7, 2023

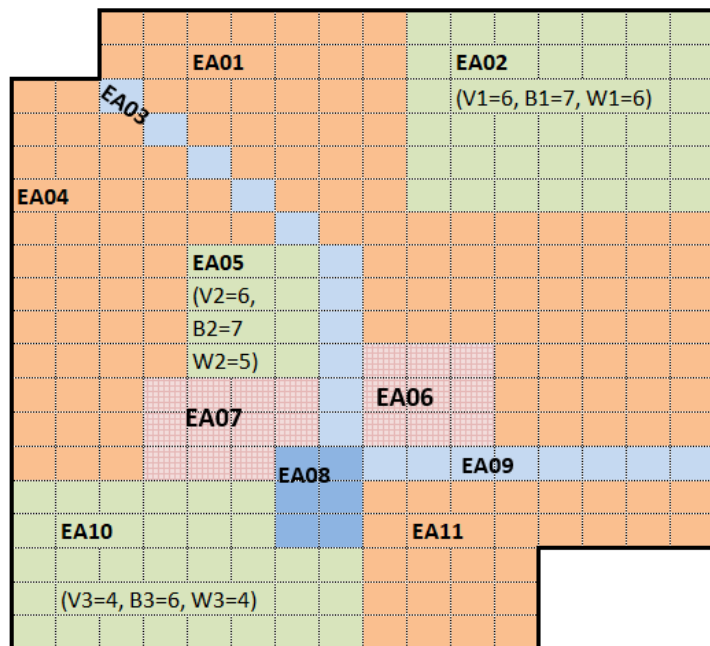
Extent

Land cover	Aridity	Elevation	Ecosystem functional group
Artificial surfaces (incl. urban and associated areas)	--	--	Urban and industrial ecosystems (T7.4)
Woody crops	--	--	Plantations (T7.3)
Tree-covered area	≥ 0.65	≥ 500 m	Tropical/subtropical montane (T1.3)
Tree-covered area	< 0.65	< 500 m	Tropical/subtropical dry forests and thickets (T1.2)
Tree-covered area	≥ 0.65	< 500 m	Tropical/subtropical lowland rainforests (T1.1)
Inland water bodies	--	< 500 m	Permanent lowland rivers (F1.2)



Condition

(Opening Conditions)

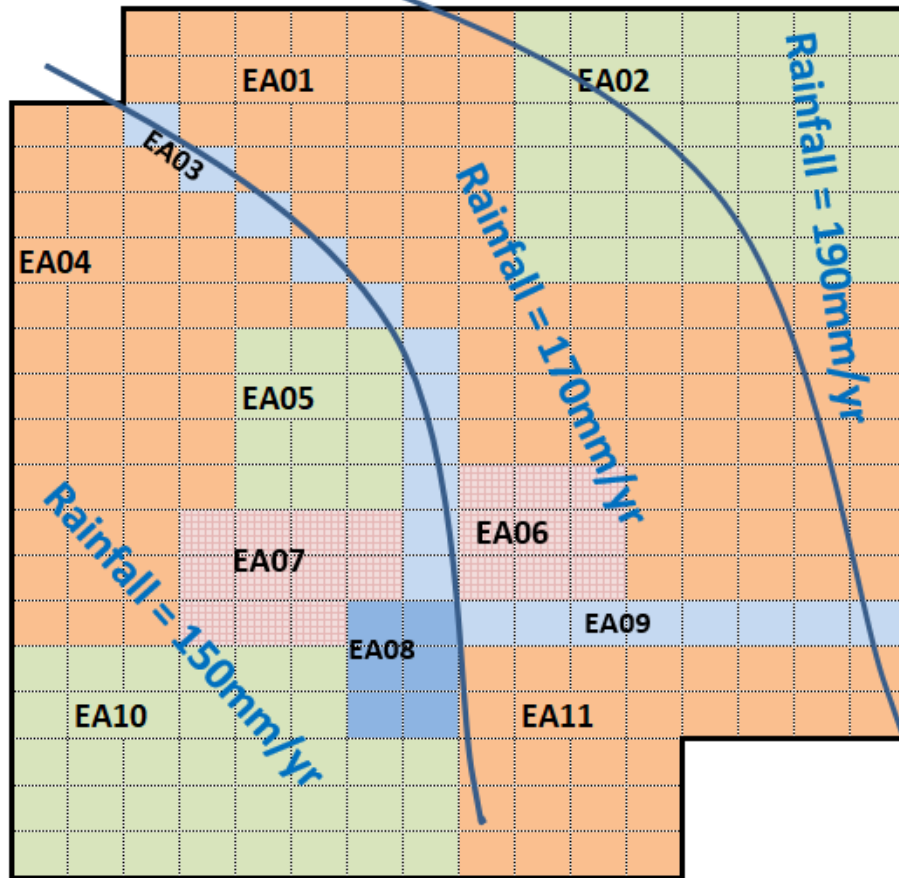


Condition Table

EA	Extent (ha)	(V) Vegetation (e.g. SOC)	(B) Biodiversity (species richness)	(W) Water (e.g. BOD)	Index
EA01 = Annual croplands	80	4.00	3.00	5.00	4.00
EA02 = Tropical heath forests	42	6.00	7.00	6.00	6.33
EA03 = Large lowland rivers	11	5.00	6.00	6.00	5.67
EA04 = Annual croplands	45	3.00	2.00	4.00	3.00
EA05 = Tropical heath forests	12	6.00	7.00	5.00	6.00
EA06 = Urban and industrial	9	2.00	2.00	4.00	2.67
EA07 = Urban and industrial	11	2.00	1.00	3.00	2.00
EA08 = Coastal river delta	6	5.00	7.00	5.00	
EA09 = Large lowland rivers	8	3.00	3.00	4.00	3.33
EA10 = Tropical heath forests	36	4.00	6.00	4.00	4.67
EA11 = Annual croplands	28	3.00	2.00	3.00	2.67
	288				

Ecosystem Type	Extent (BSU)	Vegetation	Biodiversity	Water	Index
Urban and industrial	20	2.00	1.45	3.45	2.30
Annual croplands	153	3.52	2.52	4.34	3.46
Tropical heath forest	90	5.20	6.60	5.07	5.62
Large lowland rivers	19	4.16	4.74	5.16	4.68
Coastal river delta	6	5.00	7.00	5.00	5.67
Total	288				

Services



Rainfall EA01	170	190
ha	70	10
Average EA01 (rainfall/ha)	173	
Rainfall EA04	150	
Ratio rainfall	0.87	
Yield EA01	18,700	
EA01: Yield/ha	234	
EA04: Yield/ha		
Yield EA04	9,147	

Assessment template I

- Objective: gather information on the available national geospatial products in your country that can be used to:
 - Delineate ecosystem assets
 - Assess ecosystem condition variables
 - Model ecosystem services
- Focus: **geospatial** data
 - Vector data: data associated to features that are represented by points, lines, or polygons
 - Raster data: data associated to gridded cells identified by row and column
 - Tabular data: records associated to spatial features

Assessment template II

- Spatial data available at **country** level (excludes data that is only available for some parts of the country)
- **National** geospatial data and not the availability of Global datasets

GDA session

14:25 – 15:15	Group work on geospatial data assessment
15:15 – 15:45	Coffee & tea break
15:45 – 17:00	Presentations on geospatial data assessment