



SEEA



**Samoa's
Environmental
Economic Accounting
(SEEA)**

Experimental Water Account





1. SEEA Development



SBS Environment Unit-July 2013

SEEA mission in 2013

- ▣ Identified Water Accounts a Priority
- ▣ Capacity building & Trainings
 - SEEA training August 2013, Samoa
 - SEEA training July 2014, NY USA
 - Water Accounting Attachment, ABS 2014
 - SEEA seminar for ESCAP, Chiba Japan 2016
- ▣ Data identification & compilation
- ▣ Stakeholder consultation





Samoa's Exp. Water Accounts



Aug 2015: ESCAP sponsored mission

- Meetings & Consultations
- Assessing data & populating the accounts using the available data
- Addressing data gaps using Statistical techniques
- Presentation of provisional results to key stakeholders



2. RESULTS



- **Producing Experimental Physical supply & use tables for;**
 - 2011-12
 - 2012-13
 - 2013-14
 - 2014-15
- **Monetary Information**
 - Distributed water (SWA & IWS) 2014-15
- **Indicators**
 - M3 per household
 - Water expenditure per household (\$/m³)



Samoa 2014-15 Experimental Water Supply & Use Millions m³

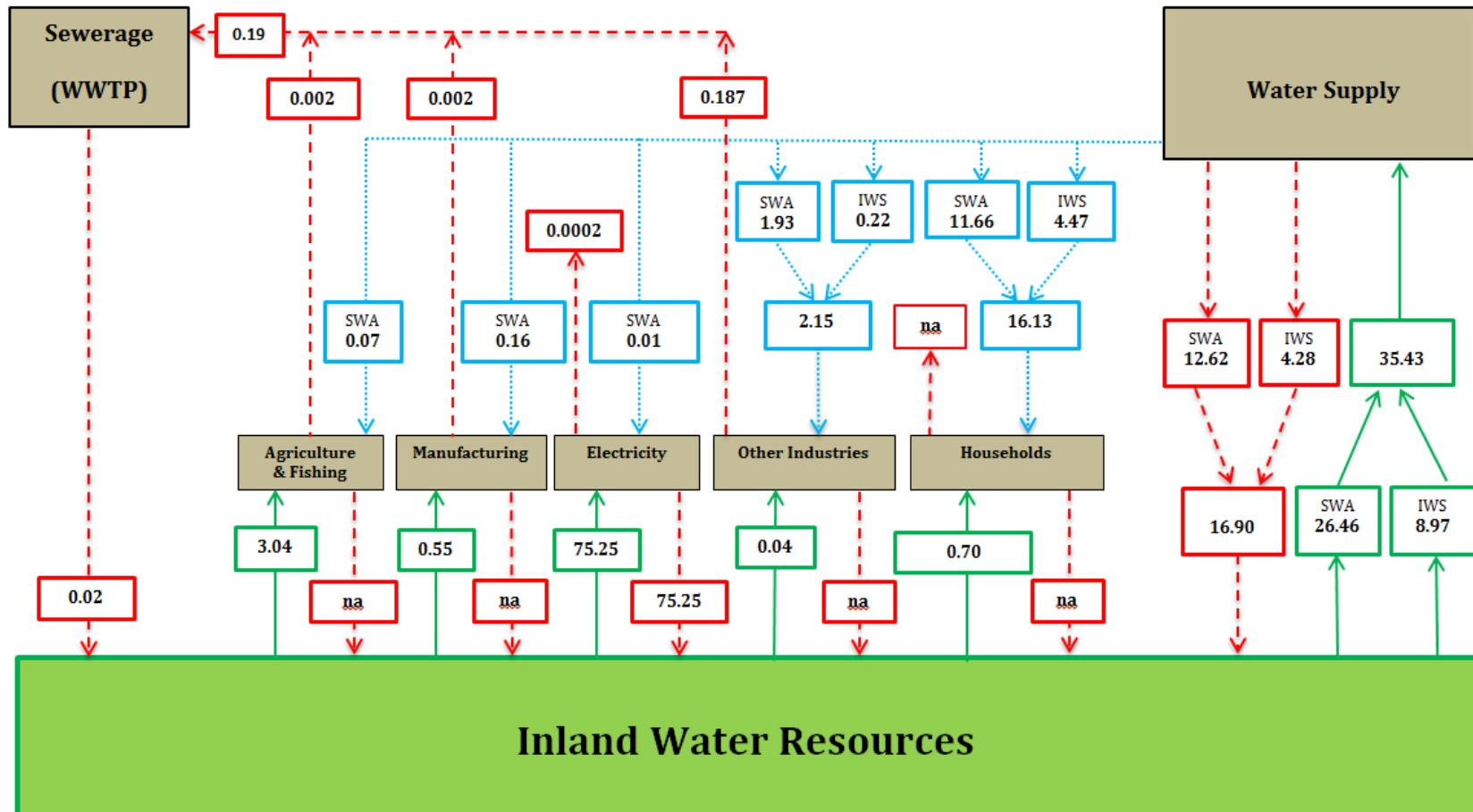


Fig. 1: Major Water Flows in Samoa 2014-15 (millions m³)

Key: → Abstraction from the Environment

⋯→ Water from other economic unit

---→ Wastewater

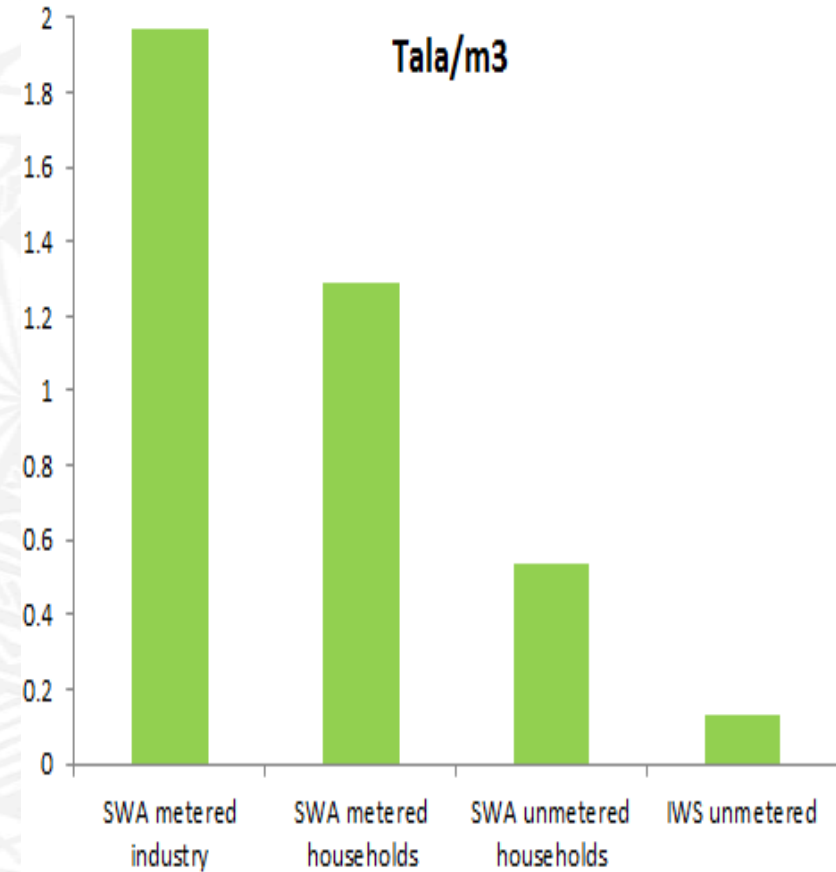
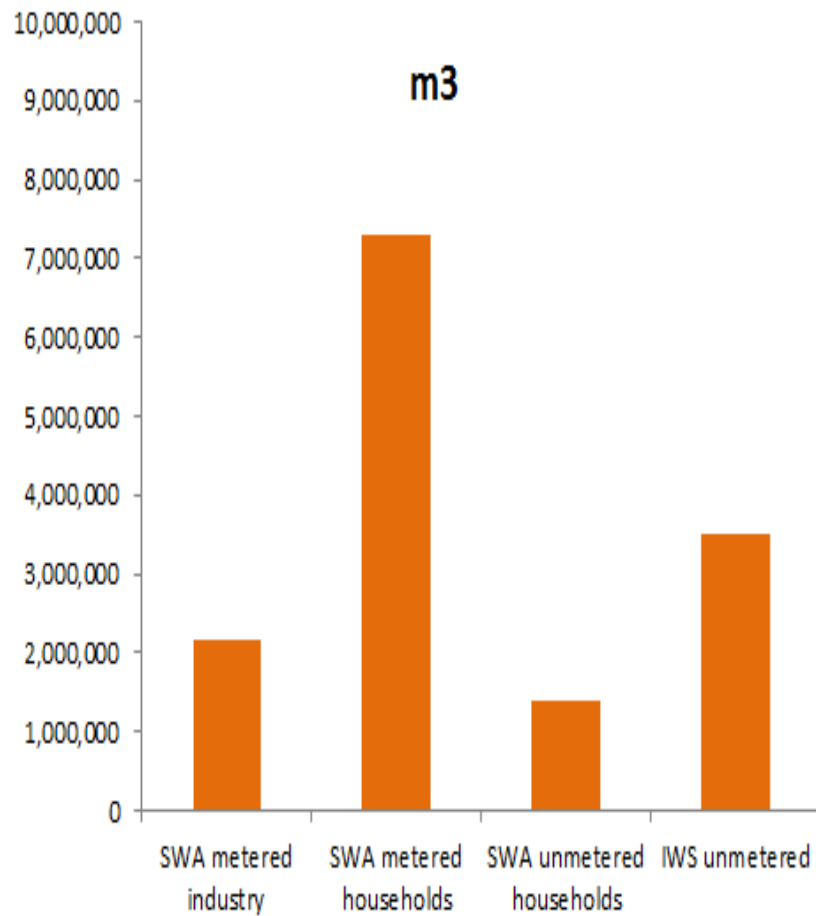


Note: Definition of Wastewater as frequently used throughout this document "is discarded water that is no longer required by the owner or user".



Household Indicators

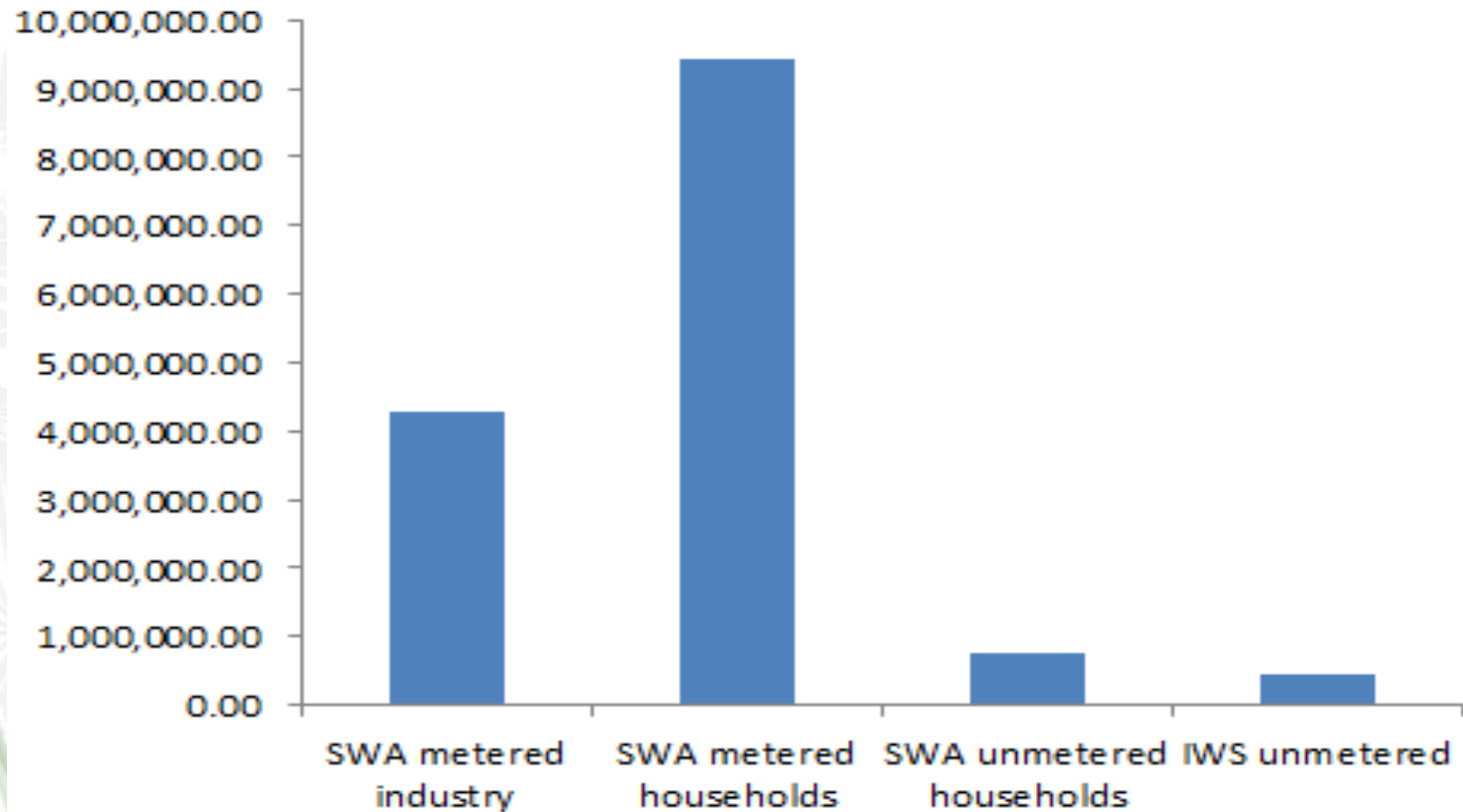
Water use & amount paid per cubic meter 2014-2015





Household Indicators

\$Tala





3. Nature of Collaboration



Challenges:

- Water data access/ data sharing
 - Confidentiality
- Standardization of water data.
E.g.
 - Coding of industry
 - Using same definition of household size
 - Reference years (calendar or financial)
- Linking accounts to decision-making and processes



4. Way Forward

- Enable ES & Water Accounts to be provided & compiled regularly (Water accounts 2015-16 ready to be released)
- Interest from other sectors. Develop & Apply SEEA into other areas:
 - Waste, Energy
- Linking accounts to decision making and processes
- Increase coordination and cooperation to:
 - enable ES to be provided & compiled regularly
 - enable Water and Environment Accounts to be compiled continually
 - enable to provide statistics to monitor the progress of E. Indicators (e.g. Sector, SDS, SDGs)



SALAMAT