



BADAN PUSAT STATISTIK

Compilation of Air Emission Accounts in Indonesia

*Regional Training Workshop on an Accounting
Approach to Climate Change Statistics and Indicators*



Yunofri
Zanial Fahmi Firdaus

Directorate of Production Accounts
BPS – Statistics Indonesia

Chiba, 13 April 2023

Sumber gambar:
www.pexels.com

OUTLINE



01

INTRODUCTION

02

**COMPILATION OF AIR EMISSION
ACCOUNTS**

03

**THE USE OF AIR EMISSION ACCOUNTS
FOR POLICY AND ANALYSIS**





1

INTRODUCTION

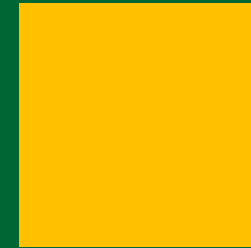


ABOUT BPS-STATISTICS INDONESIA

(President Regulation Number 86 of 2007)



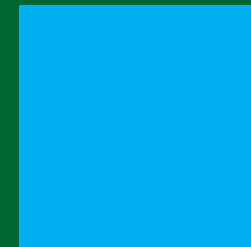
BPS-Statistics Indonesia is a **Non-Ministerial Government Agency** directly responsible to the President (Article 1)



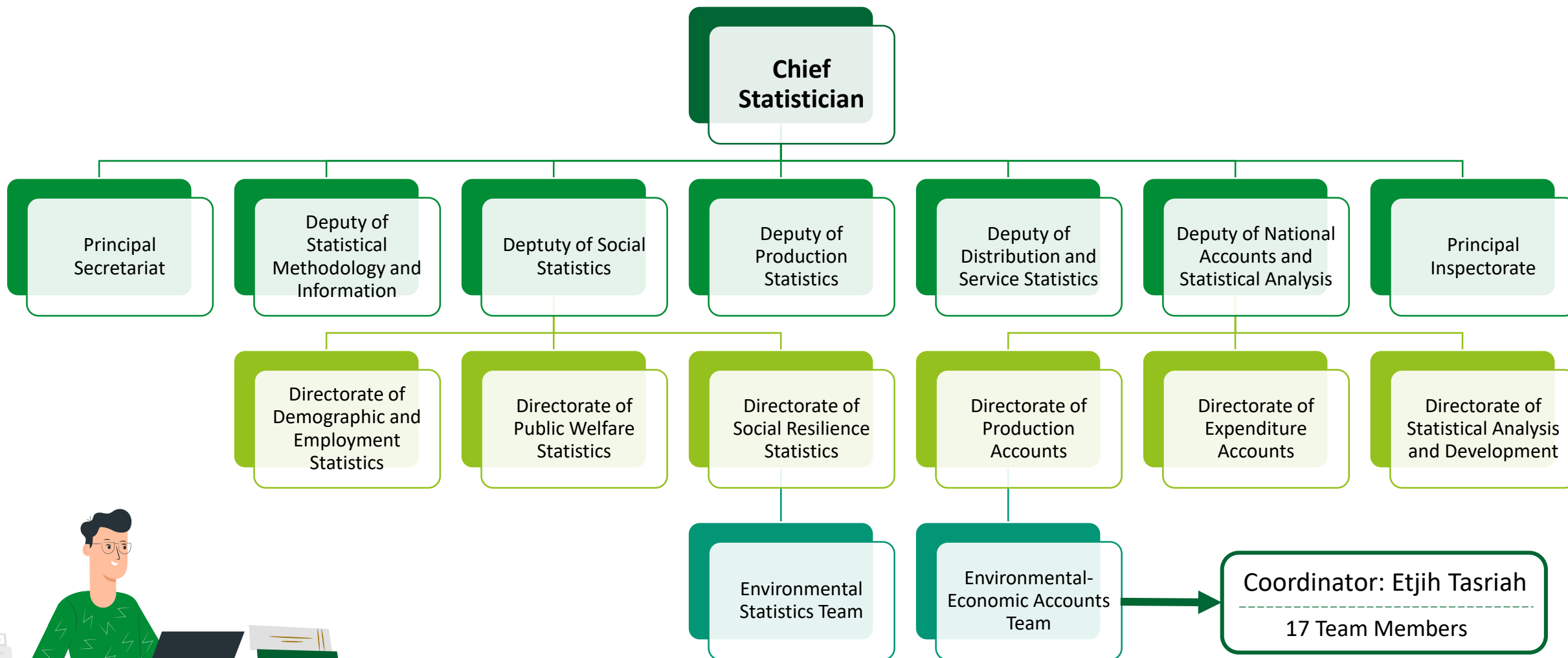
BPS in particular has an important function as an institution that **organizes statistical activities** such as censuses or national surveys



As a non-ministerial institution, the position of BPS in relation to other government agencies or ministries is **independent**. This condition allows BPS to act as a **check and control** for all statistical figures of government agencies.



STRUCTURE OF ORGANIZATION IN BPS



ACTIVITIES OF BPS ENVIRONMENTAL-ECONOMIC ACCOUNTS TEAM



BPS regularly publishes Indonesia System of Integrated Environmental-Economic Accounting (SISNERLING) comprising asset accounts for land, timber, mineral and energy resources.



In addition to SISNERLING, BPS also publishes physical energy flow accounts and GHG emission accounts.

Sisnerling Publication



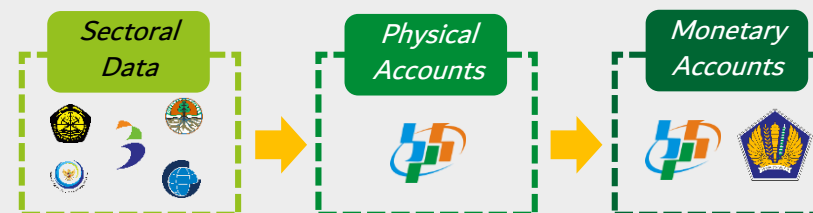
Flow Accounts Publication



Inter-Agency Coordination Mechanism



- Government Regulation Number 46 of 2017 concerning Environmental Economic Instrument
- BPS Regulation Number 3 of 2023 concerning Compilation Guidelines of Natural Capital and Environmental Accounts



Topics of In-depth Study SEEA

2016-2017



EPEA/EGSS

2018



SEEA for Agriculture, Forestry, and Fishery

2019-2020



Sustainable Tourism

2021-2022



Ocean Accounts

2023



Biodiversity Accounts



Climate Change

2024



Green Economy



2

COMPILATION OF AIR EMISSION ACCOUNTS

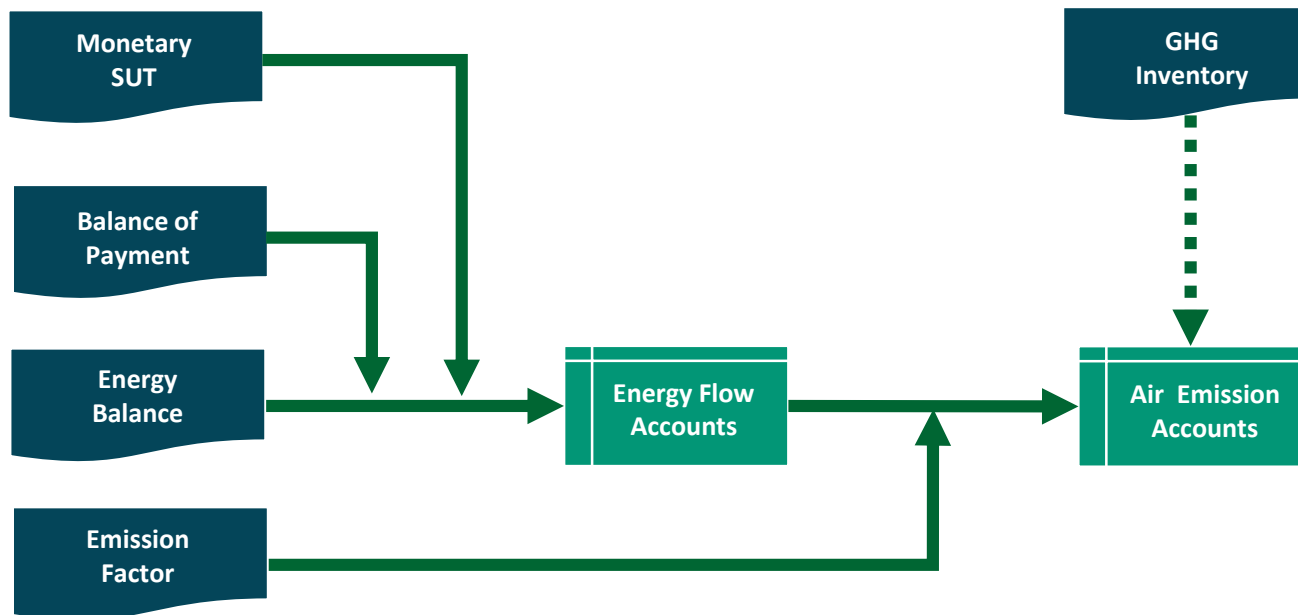


COMPILATION OF SEEA FLOW ACCOUNTS IN INDONESIA

- BPS has compiled SEEA flow accounts since 2017 after receiving technical assistance from UNSD
- Currently, the annual publication of Indonesia flow accounts consists of:
 - Physical Energy Flow Accounts
 - Air Emission Accounts for Greenhouse Gases (GHG)



The Compilation Process of Indonesia Flow Accounts



Energy Flow Accounts



7 AFFORDABLE AND CLEAN ENERGY

- ✓ Renewable energy share in the total final energy consumption
- ✓ Energy intensity measured in terms of primary energy and GDP

Air Emission Accounts



9 INDUSTRY, INNOVATION AND INFRASTRUCTURE

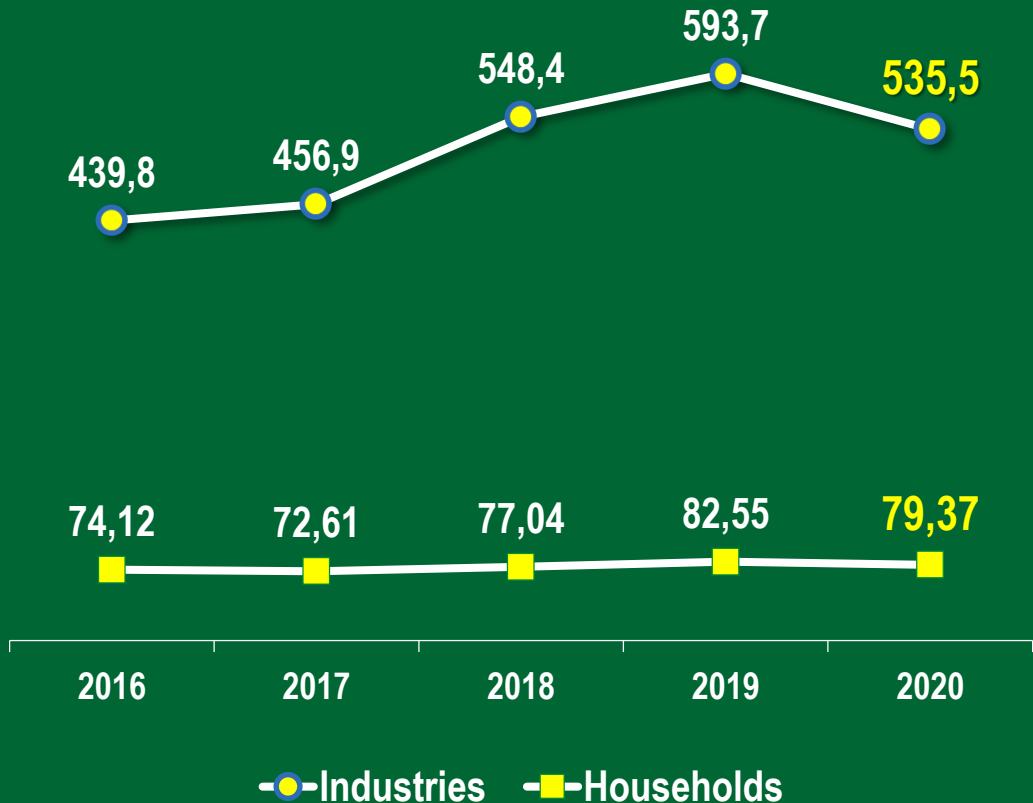
- ✓ CO₂ emission per unit value added



Target 9.4

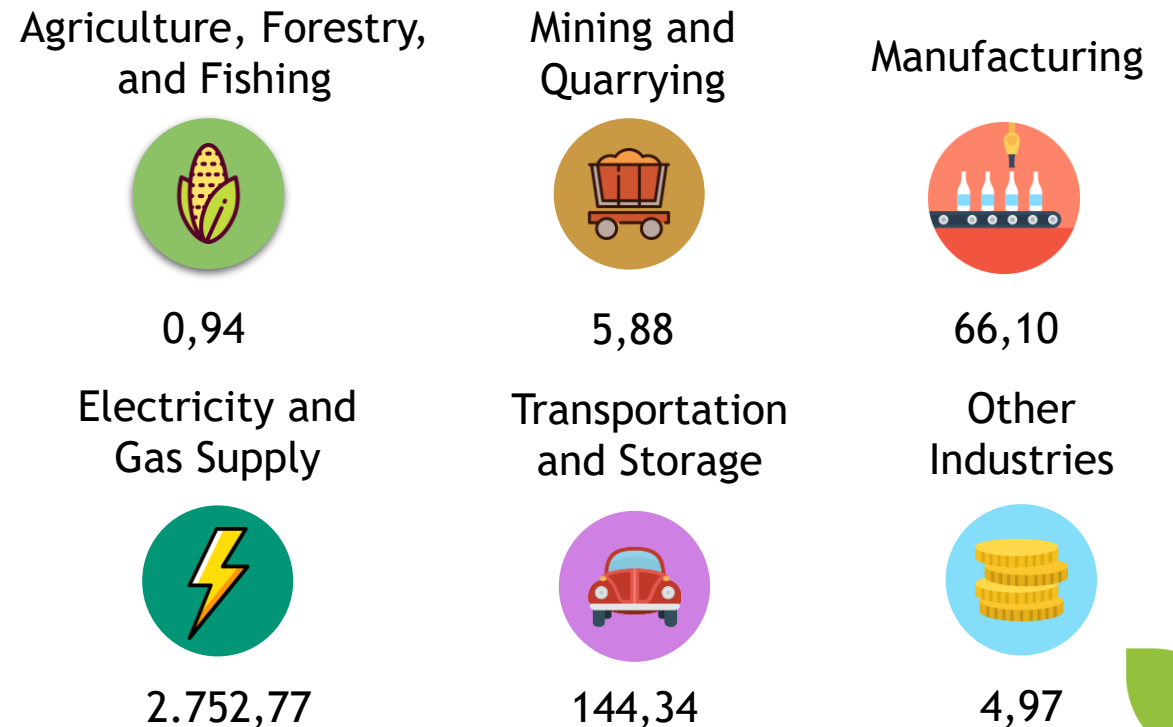
By 2030, upgrade infrastructure and retrofit industries to make them sustainable, with increased resource-use efficiency and greater adoption of clean and environmentally sound technologies and industrial processes, with all countries taking action in accordance with their respective capabilities

Energy-Related CO₂ Emission by Industry and Household (million tonnes), 2016-2020



Energy-Related CO₂ Emission per Unit Value Added by Industry (tonnes per billion IDR), 2020

TOTAL INDUSTRIES : 51,83



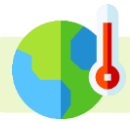


3

THE USE OF AIR EMISSION ACCOUNTS FOR POLICY AND ANALYSIS



DATA PROVISION IN G20 DATA GAPS INITIATIVE (DGI) 3 WORK PLAN



CLIMATE CHANGE

- 1 GHG Emission Accounts ★
- 2 Energy Accounts ★
- 3 Carbon Footprint ★
- 4 Climate Finance
- 5 Forward Looking Physical and Transition Risk
- 6 Climate Change Related Expenditures – Climate Subsidies
- 7 Climate Change Related Expenditures – Mitigation and Adaptation Expenditures



HOUSEHOLD DISTRIBUTIONAL INFORMATION

- 8 Income, Consumption, and Saving Distribution
- 9 Wealth Distribution



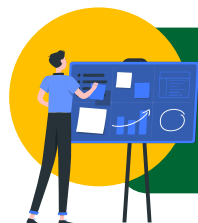
FINTECH AND FINANCIAL INCLUSION

- 10 Fintech Credit
- 11 Fintech and Digital Money
- 12 Financial Inclusion



ACCESS TO PRIVATE AND ADMINISTRATIVE DATA AND DATA SHARING

- 13 Access to Private and Administrative Data
- 14 Recommendation on Data Access and Data Sharing, including the Possible Development of an International Microdata Standard



GHG Emission Accounts is the first recommendation
in DGI-3 Work Plan



THE USE OF AIR EMISSION ACCOUNTS FOR POLICY AND ANALYSIS



Environmentally-Extended Input-Output Table

- ✓ *The combination air emission accounts with input-output table is used by academics to build analytical tools to support the implementation of Green Economy in Indonesia*



Low Carbon Development Plan

Decrease in
GHG emission
compared to baseline

27,3%

Decrease in
GHG emission intensity
compared to baseline

31,6%

Decrease in GHG emission compared to baseline by sector



Energy
13,2%



Land
58,3%



Waste
9,4%



IPPU
2,9%



Coastal and marine
7,3%



LESSONS LEARNED AND THE WAY FORWARD

1

Improve the scope of air emission accounts by further coordination with related ministries who produce the source data

2

Create an institutional regulation on the compilation methodology of environmental-economic accounts agreed by related government institutions

3

Build an integrated data system to facilitate the data exchange between NSO and other stakeholders



BADAN PUSAT STATISTIK

ST2023
SENSUS PERTANIAN



Thank You!
www.bps.go.id

