

Expert Group Meeting on SEEA-Related Indicators for the Global Biodiversity Framework Logistics Information

Contents

Introduction	2
Meeting venue	2
Travel	2
International arrivals	2
Arriving by car/taxi	3
Arriving by rail/bus	3
Arriving by cycle	3
Accommodation	4
Visas	4
Weather	5
Currency	5
Emergency Information.....	5
Contact details	5
Further details	5



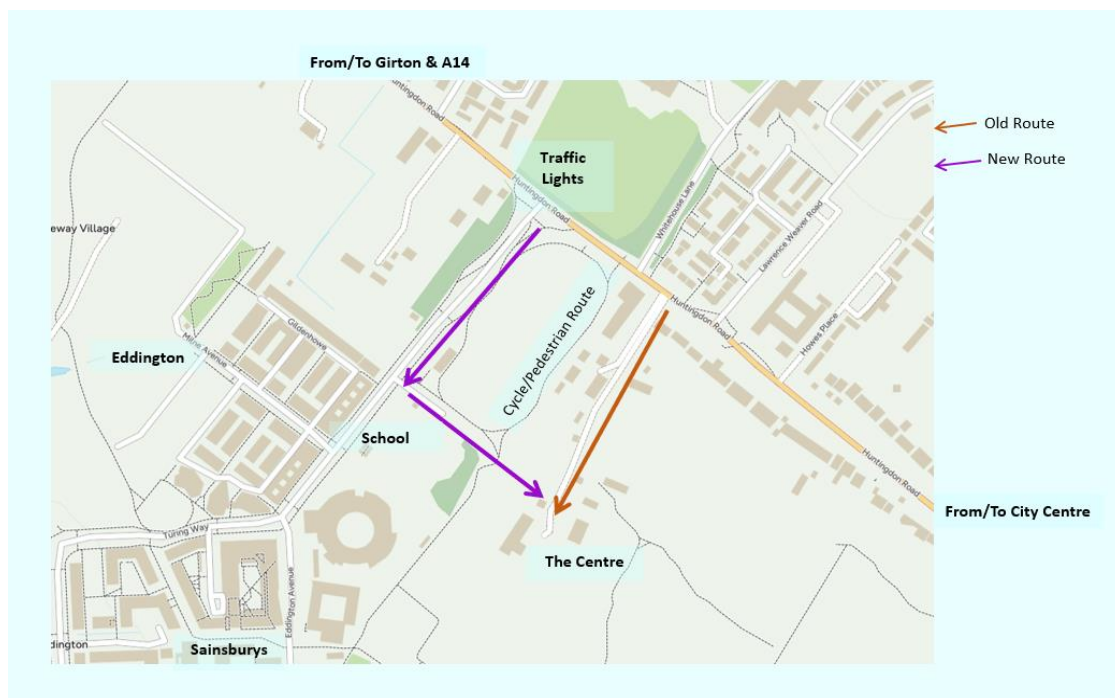
Introduction

The Expert Group Meeting on SEEA-Related Indicators for the Global Biodiversity Framework will be held from the 10-12 February 2026 in Cambridge, UK. This document provides details of how to get to the meeting venue, as well as other useful information for your stay.

Meeting venue

The meeting will be held at the UNEP-WCMC Office. The venue address is:

UNEP-WCMC
219 Huntingdon Road
Cambridge
CB3 0DL



Travel

International arrivals

Stansted Airport

Stansted Airport is very convenient for Cambridge, being connected by a direct rail link (journey time approximately 45 minutes). By car the journey time is approximately 40 minutes.

Gatwick Airport

If arriving at **Gatwick Airport**, it is best to take the train to London Victoria, transfer to the tube (Victoria line) to London King's Cross station. You can then catch a direct train to Cambridge (journey time approximately 2.5 hours). By car the journey takes approximately 2 to 3 hours and is heavily dependent on traffic.



Heathrow Airport

There are regular trains from **Heathrow Airport** (journey time 2.5 hours). To travel by train from [Heathrow to Cambridge](#) the best option is to take the Heathrow Express from Heathrow to Paddington Station, followed by a short tube journey (via the Circle or Hammersmith and City lines) to King's Cross and then the direct train to Cambridge. By car the journey time is approximately 1.5 to 2 hours, but this can vary according to traffic conditions.

London St Pancras International – Eurostar

If arriving via the Eurostar at **London St Pancras International** railway station, it is best to take the train from **King's Cross Station**. King's Cross is adjacent to St Pancras and it takes about 2 minutes to get from one to the other by foot. Direct trains from Kings Cross to Cambridge take either 50 minutes or 1.5 hours, depending on the service. Alternatively, direct trains from St Pancras take about 1.1 hours, however they are not as frequent as services from Kings Cross.

Arriving by car/taxi

Cambridge is connected to many locations via the A14, M11 and A10. There is parking available at the UNEP-WCMC Office on Huntingdon Road.

There is a taxi rank outside the station. Taxis cost around £8 to central Cambridge. Uber is also available.

Taxis

- Camcab: +44(0) 1223 704704
- Panther Taxis: +44(0) 1223 715715 / 1223 424424 / 1223 523523
- Cambridge City Taxis: +44(0) 1223 832832

Arriving by rail/bus

For timetables visit www.nationalrail.co.uk

There are fast trains from London King's Cross Station to Cambridge every half hour, taking about 50 minutes. Direct trains are available to Cambridge from Norwich, Ipswich, Kings Lyn, Peterborough, Birmingham, London Liverpool Street and Stansted Airport.

[Stagecoach 5](#), [Stagecoach 6](#) and the [Universal](#) bus routes are suitable when travelling to the UNEP-WCMC Office, which stop on Huntingdon Road.

Arriving by cycle

Alternatively, you could bring your bike with you and cycle from the station. Cycling from the station will take around 20-minutes to the UNEP-WCMC office which has plenty of cycle parking. You can plan your cycle route on [Cycle Streets](#), choosing the quietest or quickest route to suit.

Cycle hire facilities are also available at the station.



Accommodation

There are many accommodation options in Cambridge. Hotels nearby are listed below:

- [Hyatt Centric Cambridge](#) (5-minute walk to the UNEP-WCMC Office)
- [Turing Locke](#) (5-minute walk to the UNEP-WCMC Office)
- [Premier Inn](#) Cambridge North (Girton) (at the end of the driveway to the UNEP-WCMC office)
- [The Varsity Hotel](#) (30-minute walk or 15-minute bus to UNEP-WCMC office)
- [Hilton](#) Cambridge City Centre (40-minute walk or 15/20-minute bus to UNEP-WCMC office)
- [University Arms Hotel](#) (45-minute walk or 15/20-minute bus to UNEP-WCMC office)
- [Graduate](#) Cambridge (45-minute walk or 15/20-minute bus to UNEP-WCMC office)

There may also be bedrooms at some of the College's, availability can be checked via:

<https://www.meet-cambridge.com/events/accommodation/stay-in-a-cambridge-college/>.

Visas

Information on visa requirements to enter the UK, including full instructions on what participants need to do before, during and after applying for a visa, can be found on the [UK Government website](#).

Depending on nationality, it is likely that participants will either:

- have to apply for a Standard Visitor visa before travelling to the UK; or
- be able to visit the UK as a Standard Visitor for up to 6 months without needing a visa.

Participants can check if they require a visa here: <https://www.gov.uk/check-uk-visa>
[Immigration Rules - Immigration Rules Appendix Visitor: Visa national list - Guidance - GOV.UK](#)

Further information on visiting the UK as a Standard Visitor can be found here:

[Visit the UK as a Standard Visitor: Overview - GOV.UK](#)

Applying for a Standard Visitor visa:

For participants requiring a Standard Visitor visa to enter the UK, information on applying for a visa is on the [UK Government website](#).

You must apply for a Standard Visitor visa online before you travel to the UK and attend an appointment at a visa application centre.

A Standard Visitor visa costs £115 for up to 6 months. The earliest you can apply is three months before you travel.

Visa processing times can vary but can take a few weeks from the point that biometric information is provided. Participants requiring a visa are therefore **strongly encouraged** to apply for their visa as soon as possible. Further information on current processing times can be found here:

[Visa processing times: applications outside the UK - GOV.UK](#).

UNEP-WCMC can provide a visa letter if needed, please request one by emailing events@unep-wcmc.org. UNEP-WCMC will need the following information in order to be able to issue the letter:

- full name - as it appears in the passport.
- date of birth
- nationality
- passport number



Participants must provide all the necessary information with their visa application to meet UK immigration rules. All supporting documents can either be self-uploaded online or hard copies can be scanned at the application centre. There may be an additional cost for scanning hard copies. All documents should be uploaded / scanned before biometrics are taken as these will be attached to the online application form automatically and sent to us as part of the application and will be taken into consideration when a decision is made so it is important that all docs are uploaded before biometrics are taken.

Some useful links

Details on uploading documents: [Uploading evidence as part of your visa application - GOV.UK](#).

Supporting Docs Guide: [Visiting the UK: guide to supporting documents - GOV.UK](#).

At the end of the online application process participants will be asked to book a biometric appointment at a Visa Application Centre and pay the visa application fee. Details of the nearest visa application centre can be found at: [Find a visa application centre - GOV.UK](#).

Participants must go in person to the chosen Visa Application Centre with their passport, printed application form and any other supporting documents (including the letter of invitation). They will also be required to give their biometrics (digital photograph and fingerprints).

Internet Access

Wireless internet access is available throughout the venue. The login details will be provided on site.

Weather

The weather in Cambridge in February is very cold with temperatures between 2°C and 7°C, warm clothes are a must. Typical UK weather can be unpredictable and will likely rain, so please bring clothes suitable for all weather types (sun, wind, rain).

Currency

The currency of the UK is GBP. Airports will have currency exchange counters, alternatively there are Bureau de Change available at multiple shops within Cambridge city centre.

Many shops, restaurants and public transport will also accept card payments.

Emergency Information

The Emergency services can be contacted by calling 999 in the UK. Non-urgent medical queries can also call 111, and they will be directed to the appropriate support service.

The nearest hospital to the office is [Addenbrookes Hospital](#).

There will be First Aid practitioners on site and will also be available at your accommodation.

Contact details

Laura Mack, Senior Events Manager at UNEP-WCMC

events@unep-wcmc.org

Further details

[Home - Visit Cambridge](#)

[Homepage - UNEP-WCMC](#)