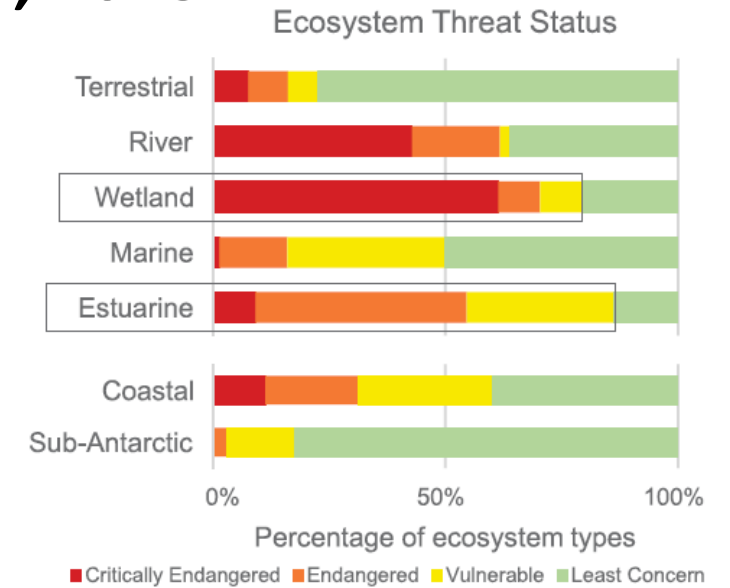
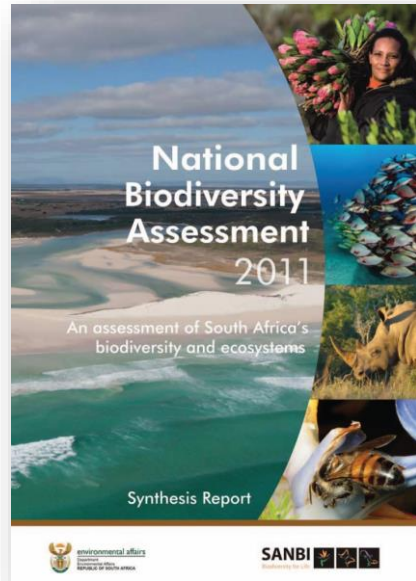
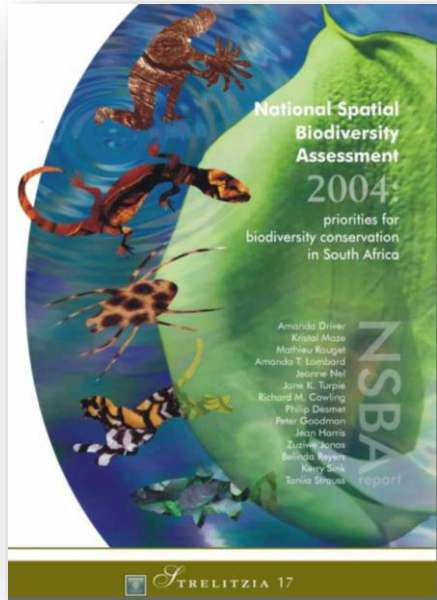


Post-2020 Global Biodiversity Framework

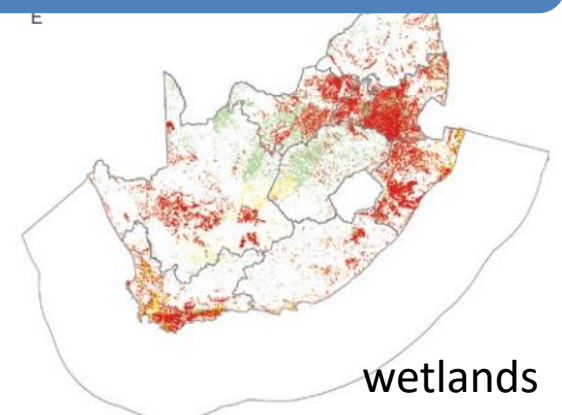
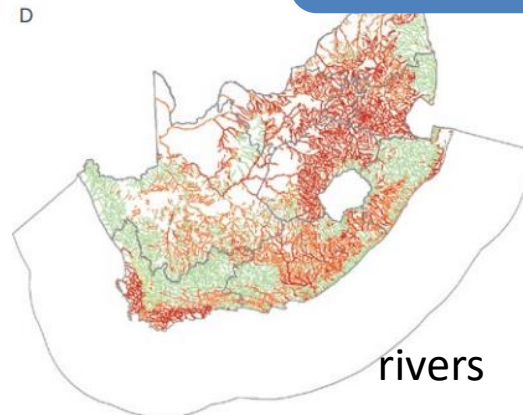
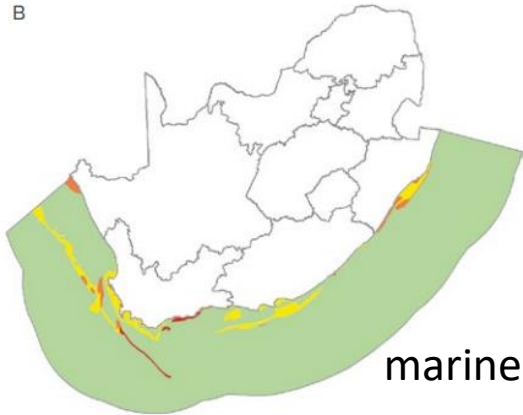
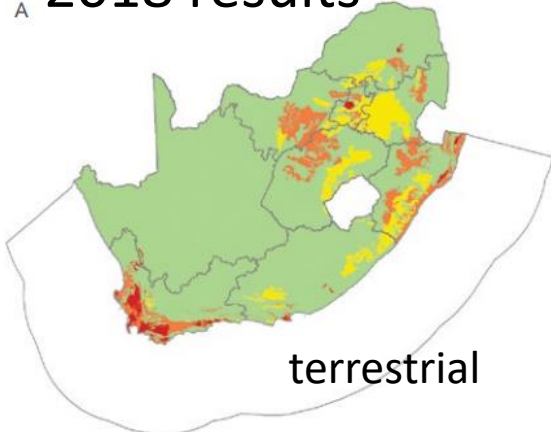
South African National Biodiversity Institute

SANBI's mandate includes monitoring and reporting on the state of biodiversity, through **National Biodiversity Assessment – 2004, 2011, 2018**

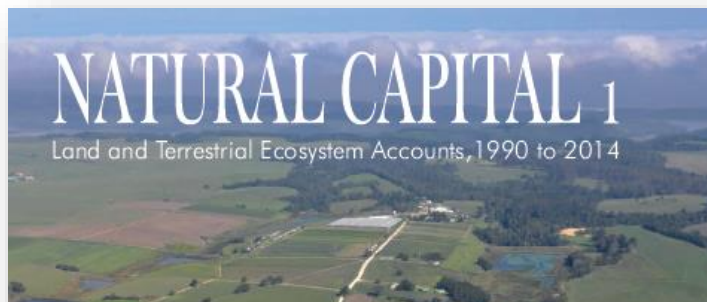


Includes Red List of Ecosystems assessment for all realms

A 2018 results



Stats SA's new *Natural Capital* series, launched Dec 2020 with Land and Terrestrial Ecosystem Accounts, 1990 to 2014

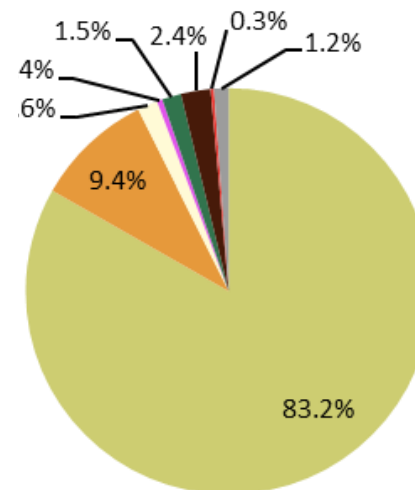
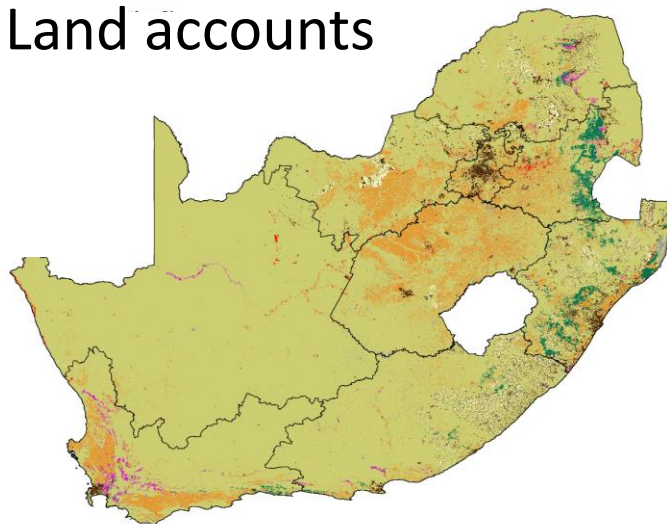


→ Directly useful for **GBF Indicator A.0.1** on extent of different ecosystem types

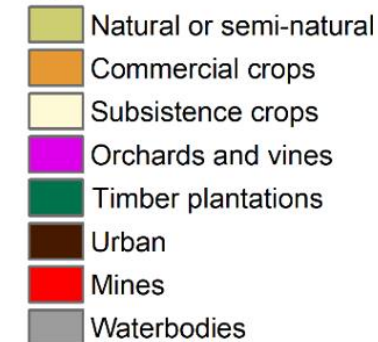
→ Also useful for any indicator that's disaggregated by ecosystem type



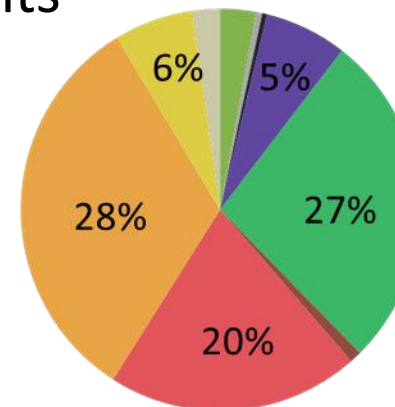
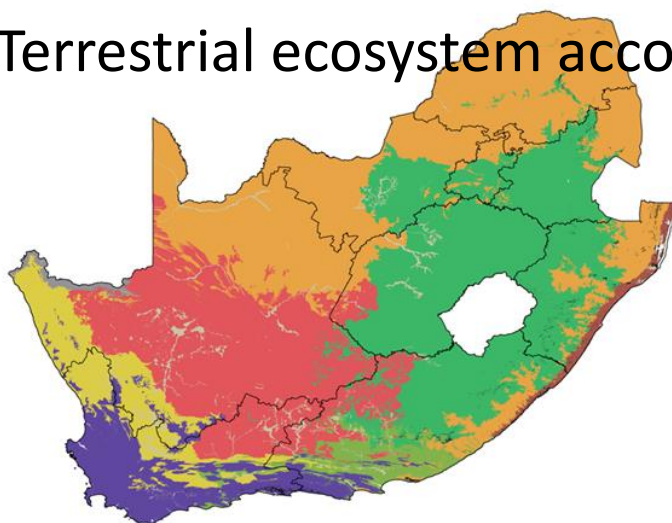
Land accounts



National land cover (tier 2) 2014



Terrestrial ecosystem accounts



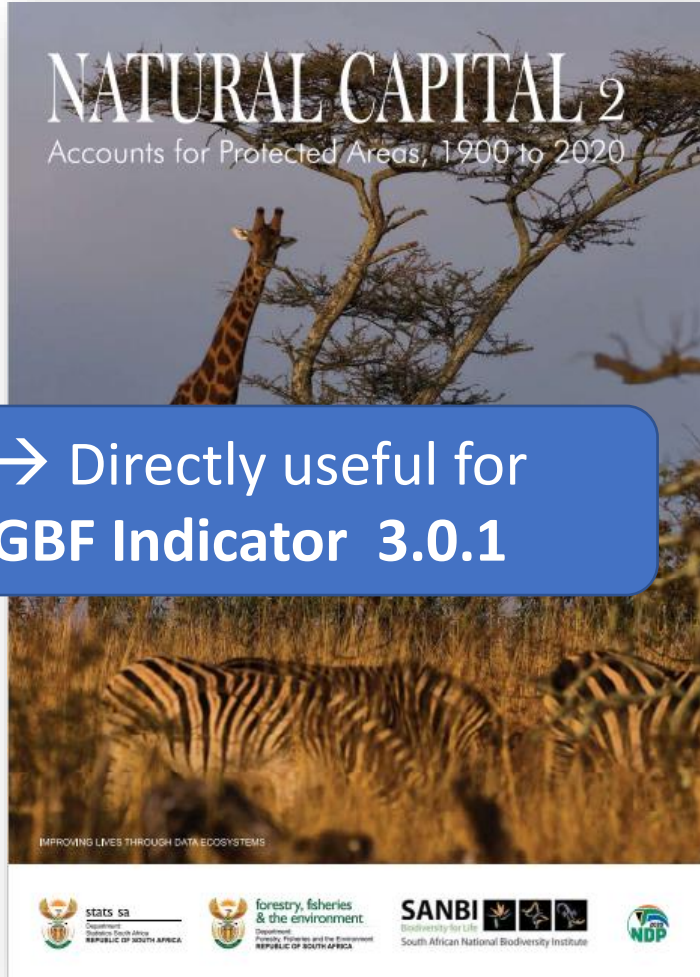
Biomes



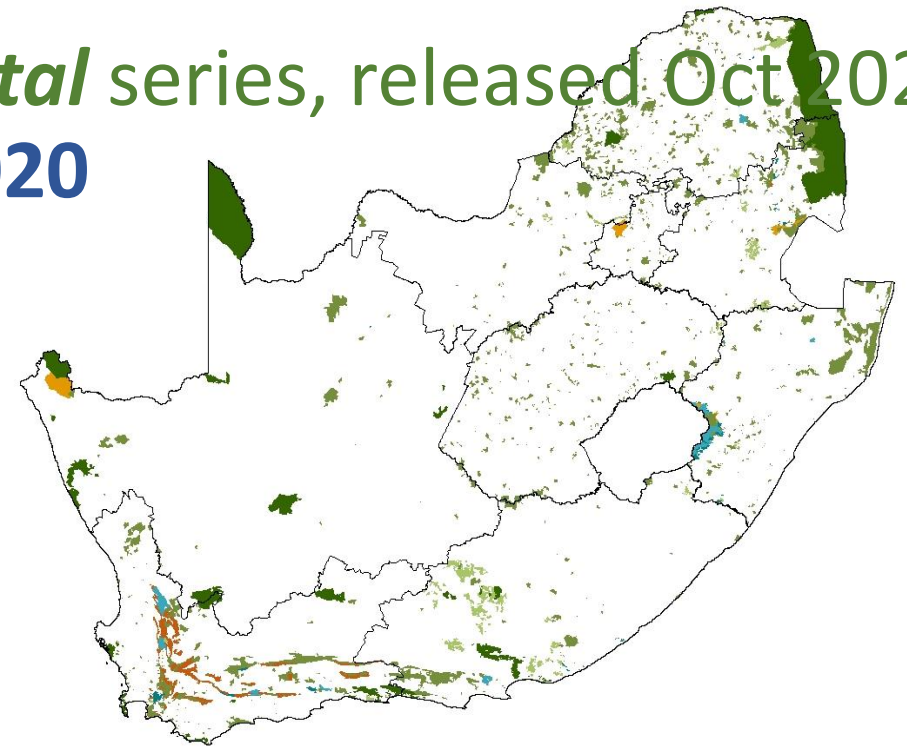
System of
Environmental
Economic
Accounting

2nd publication in Stats SA's *Natural Capital* series, released Oct 2021

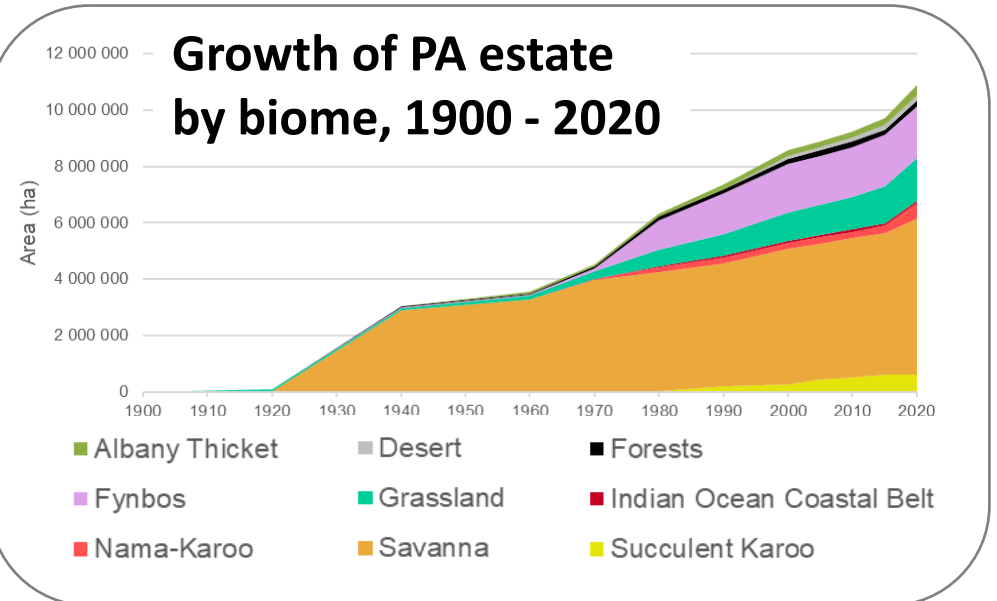
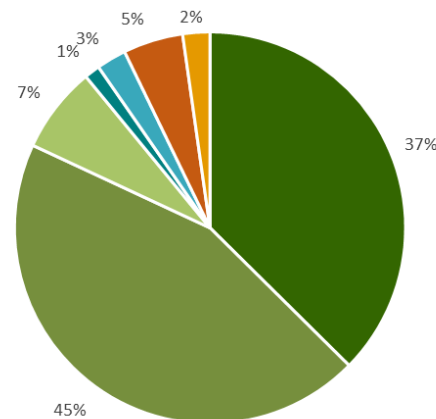
Accounts for Protected Areas, 1900 to 2020



→ Directly useful for
GBF Indicator 3.0.1



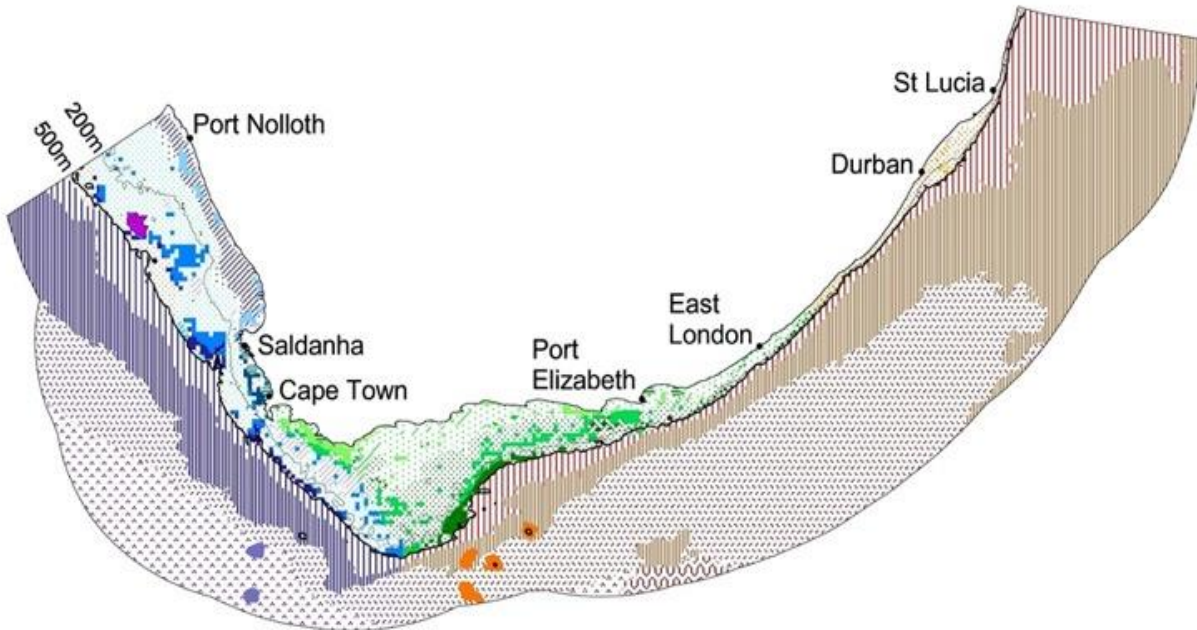
Composition of
PA estate, 2020



Future accounts in Stats SA's *Natural Capital* series

Aim: full suite of ecosystem asset accounts across all realms

Accounts for **marine ecosystems assets**



Accounts for estuarine ecosystems



Accounts for river ecosystems



Looks easy?

Builds on years of foundational work

Investment in foundational spatial data layers on ecosystems

Classification
& mapping of
**ecosystem
types**

Aligns well (not perfectly)
with IUCN's **Global Ecosystem
Typology**

Ecosystem types mapped
based on **historical extent**
(or as close as possible)

Maps of **ecological condition**

Legend for ecological condition maps:

- Natural
- Cultivation
- Urban areas and settlements
- Plantations
- Mines

Legend for ecological condition maps:

- Natural or good
- Moderately modified
- Heavily to critically modified

terrestrial

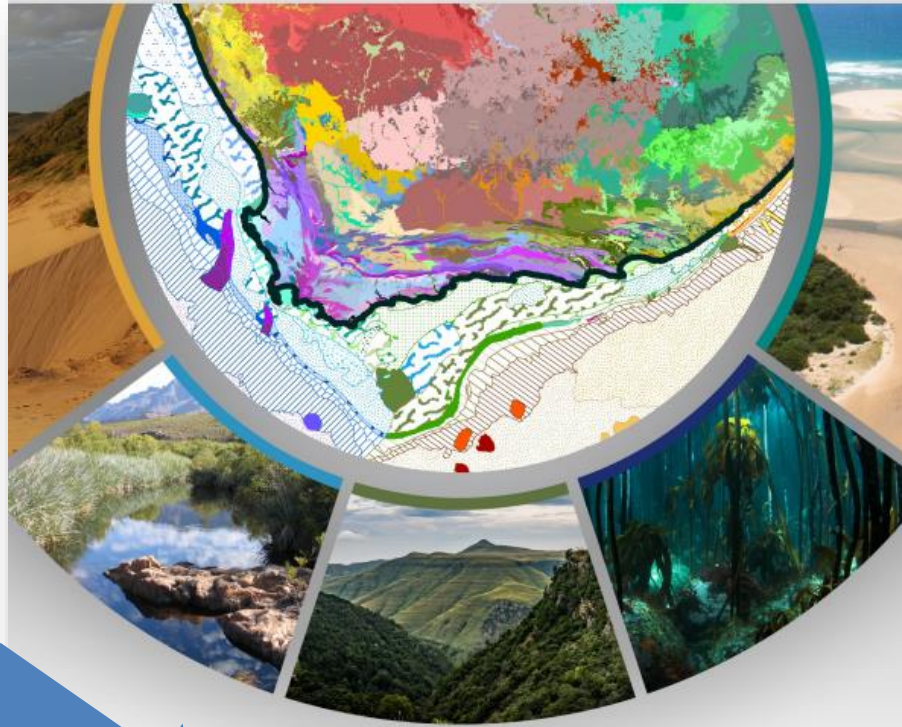
wetlands

rivers

marine

Key message:

Progress has been iterative
... effort well spent!



South African National Ecosystem Classification System Handbook

SANBI 
Biodiversity for Life
South African National Biodiversity Institute

South African National Ecosystem Classification System

- developed by SANBI in collaboration with partners, adopted by Stats SA as a standard in 2021



stats sa

Department:
Statistics South Africa
REPUBLIC OF SOUTH AFRICA



stats sa

Department:
Statistics South Africa
REPUBLIC OF SOUTH AFRICA

STATS SA 059: 2021
Version 1.00

STATISTICS SOUTH AFRICA STANDARD

The South African National Ecosystem Classification System

APPROVAL OF STANDARD

Stats SA 059:2021: The South African National Ecosystem Classification System

[illegible]

Shutokoku Taido Akita • Dainippon Kaisha Akita • Teikoku Kaisha Akita • Dainippon Kaisha Akita • Teikoku Kaisha Akita • Dainippon Kaisha Akita

IMPROVING LIVES THROUGH DATA ECOSYSTEMS



Investment in **working relationships**

- Initial discussions between Stats SA and SANBI go back to 2013
- Environment sector & national statistical office → different cultures, different lexicons, different ways of working
 - We've worked with Stats SA's environmental-economic accounting unit and geography section
- Institutional mechanisms take time to emerge. We now have:
 - **NCA Co-ordination Unit** between Stats SA, SANBI and DFFE – engine room for natural capital accounts – meets ~every six weeks
 - **Strategic Advisory Group for NCA**, convened by Stats SA, includes a range of national departments and entities – meets ~twice a year

**Key message for environment ministries:
Get to know your NSO!**