



MEA monitoring programmes that SEEA EA can support

National Institute of Statistics and Geography (INEGI) - Mexico

Paloma Merodio Gómez
Vice President

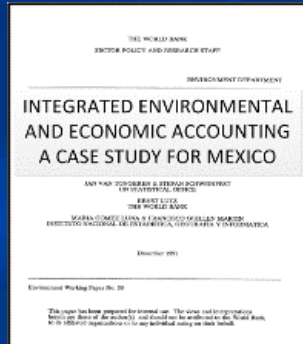
November 28, 2022

Mexico's Experience with Environmental Accounting



1991

First pilot study in the world



2007-2009

Accounts:
- Water
- Flow of Materials

2012

Participation in the preparation of the SEEA-CF

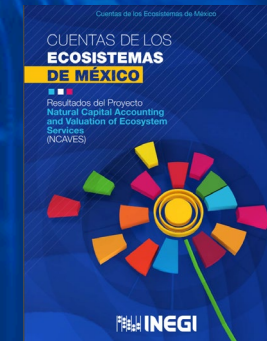


2013-2015

Reviews
SEEA- EEA

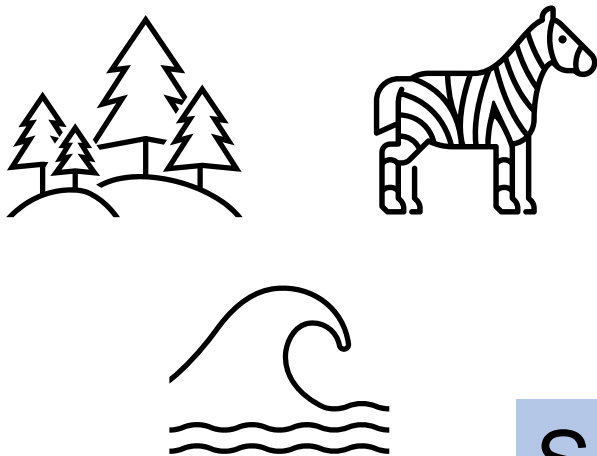
2017-2021

NCAVES
Projects

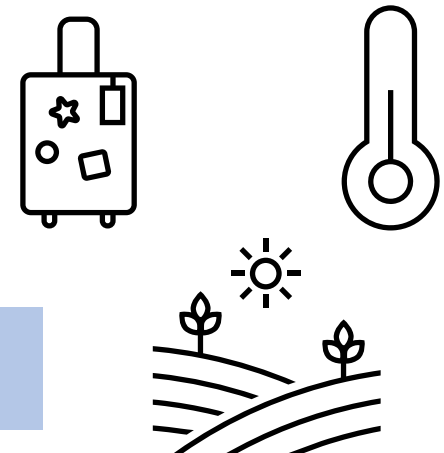


NATURAL CAPITAL ACCOUNTING AND VALUATION OF ECOSYSTEM SERVICES (NCAVES)

Capital Natural

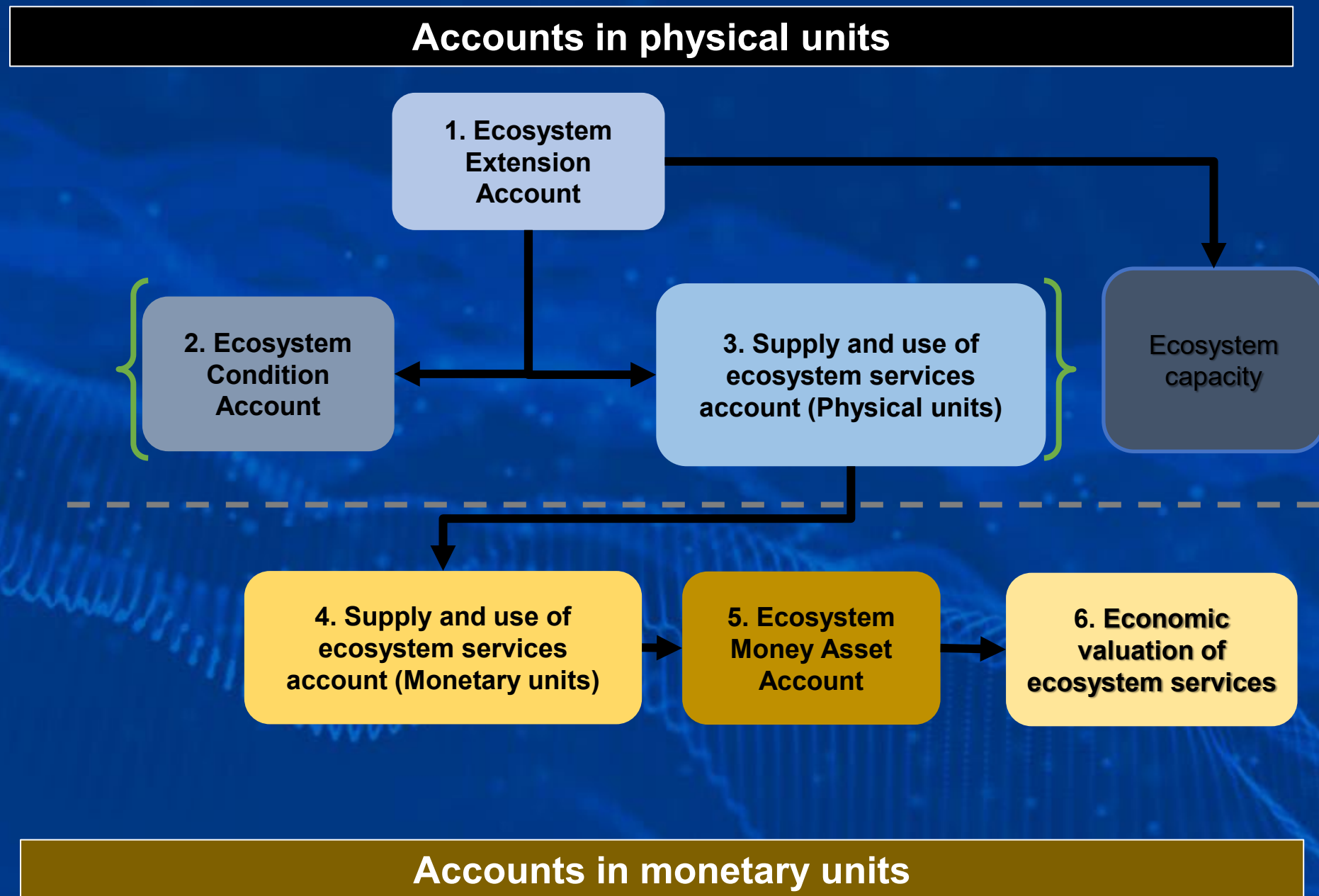


Ecosystem Services



SEEA-EA Methodology

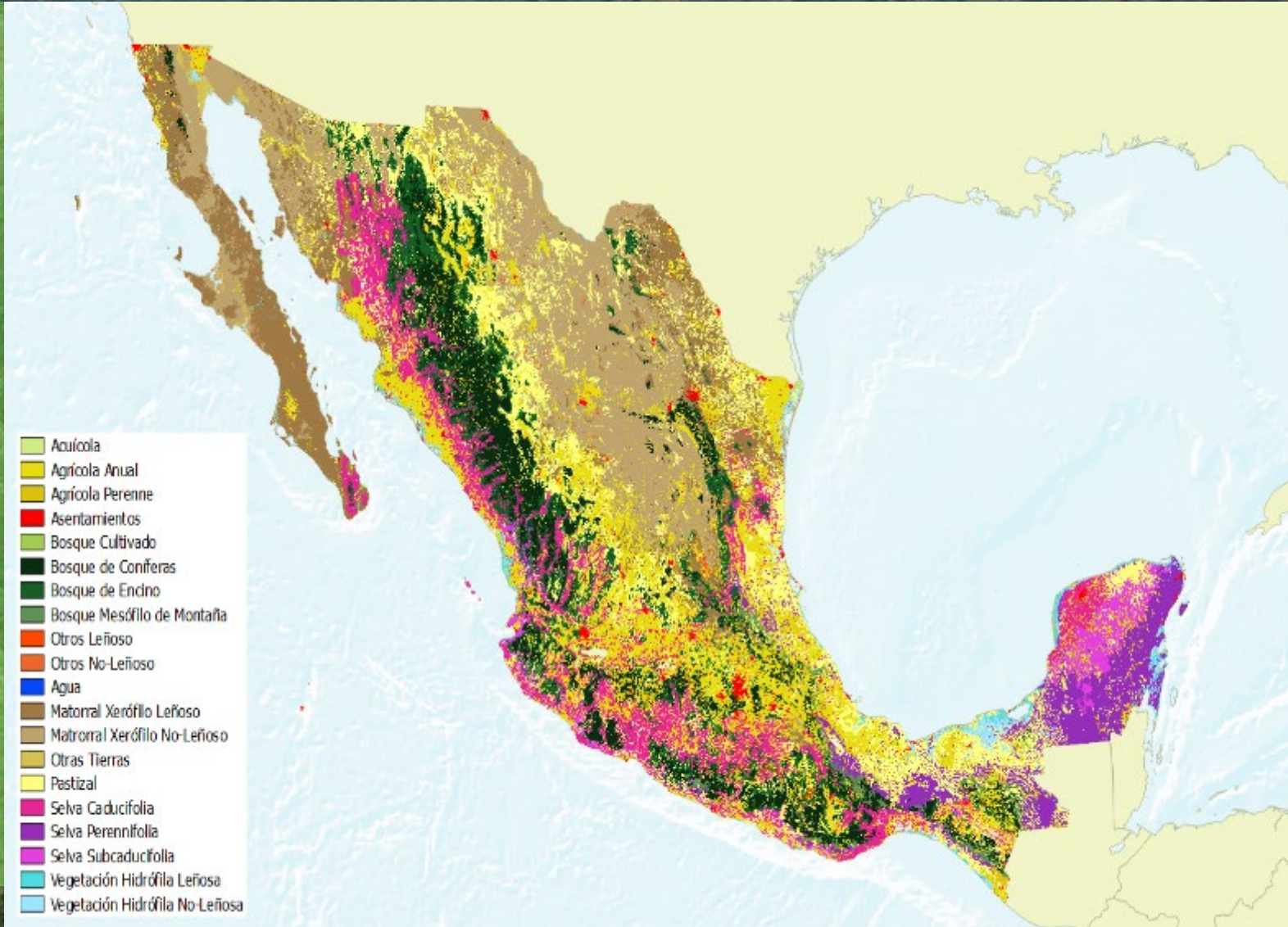
Sequence of the Accounts of the Ecosystems -Mx



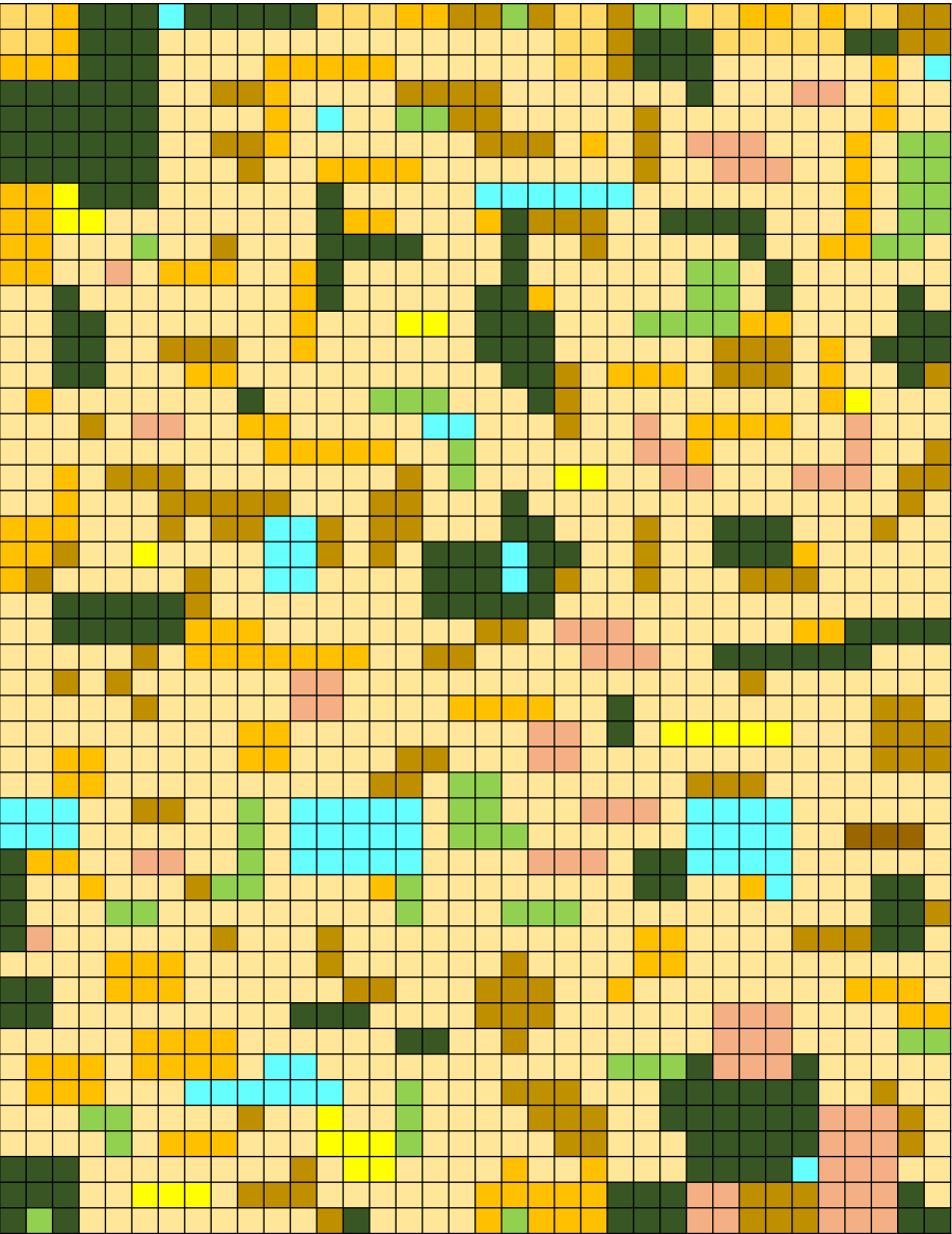
Extension Accounts

The ecosystems with the greatest extension in the total national territory are:

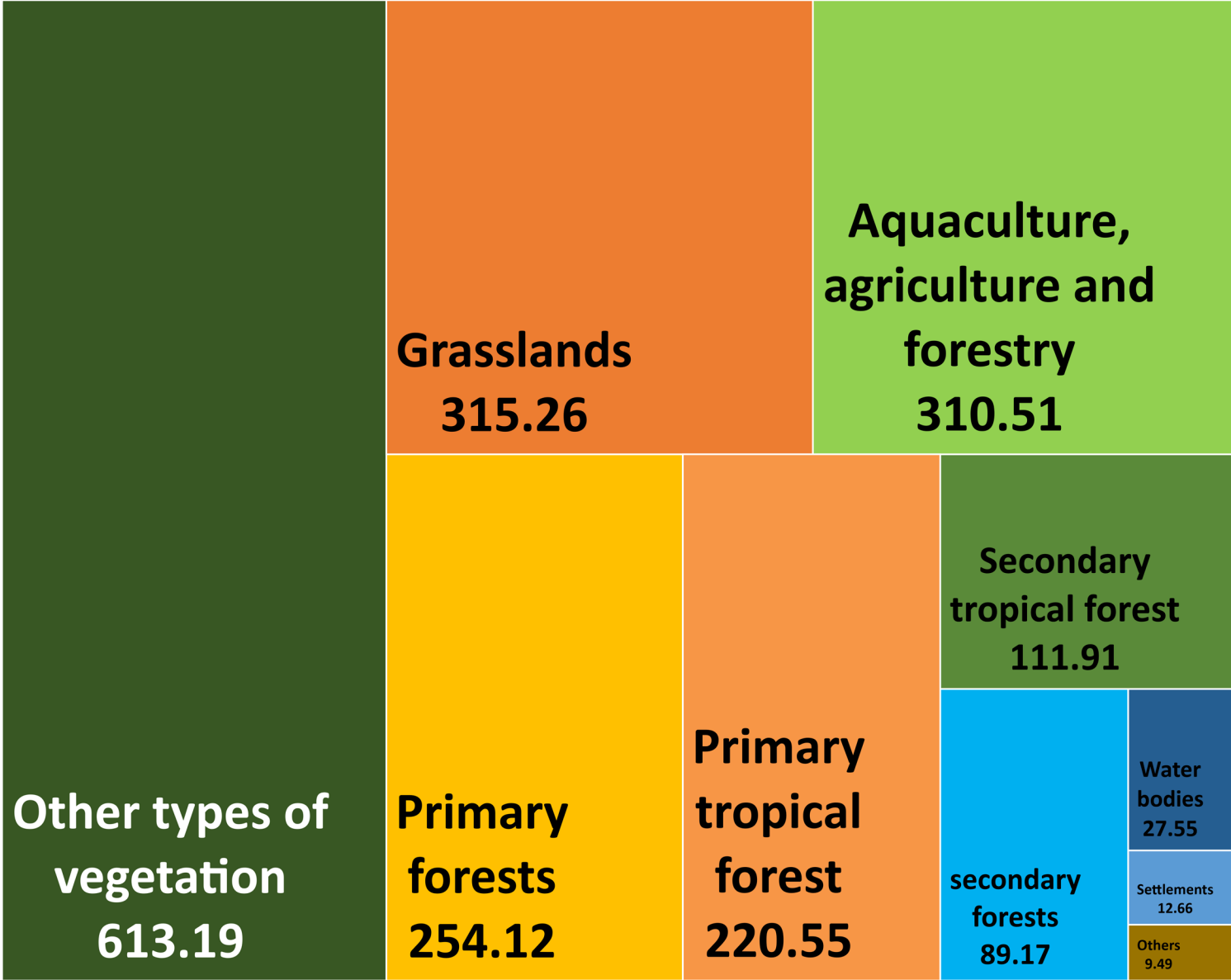
- Non-woody xeric scrub (19%)
- Grassland (16%)
- Woody xeric scrub (10%)
- Deciduous forest (9%)
- Coniferous forest (9%)
- Oak forest (8%)
- Evergreen forest (5%)
- Annual agriculture (16%)
- Others (8%)



Ecosystems in the real world look like this



...Thanks to accounting principles, they can be rearranged like this...

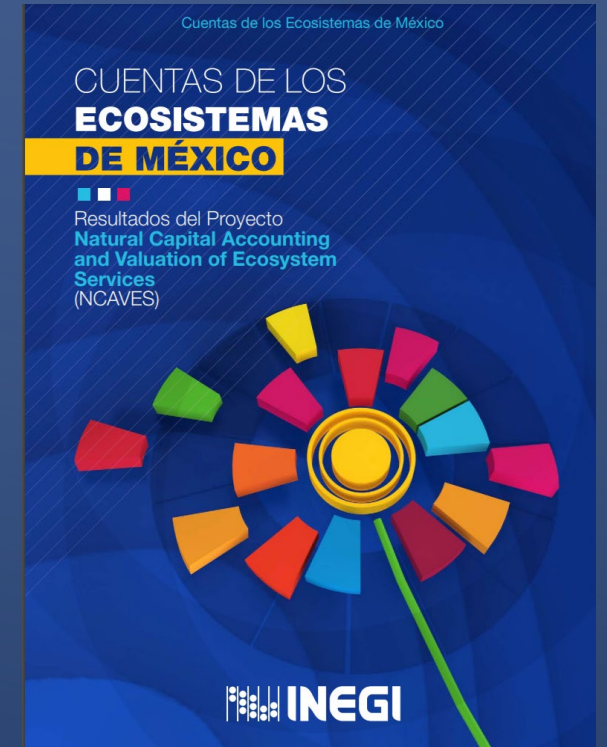
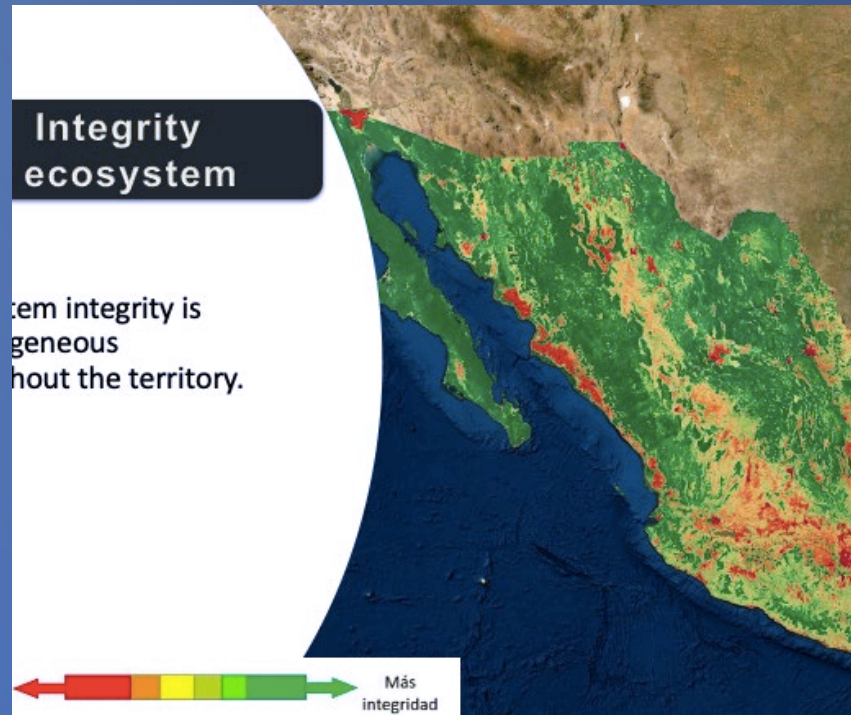
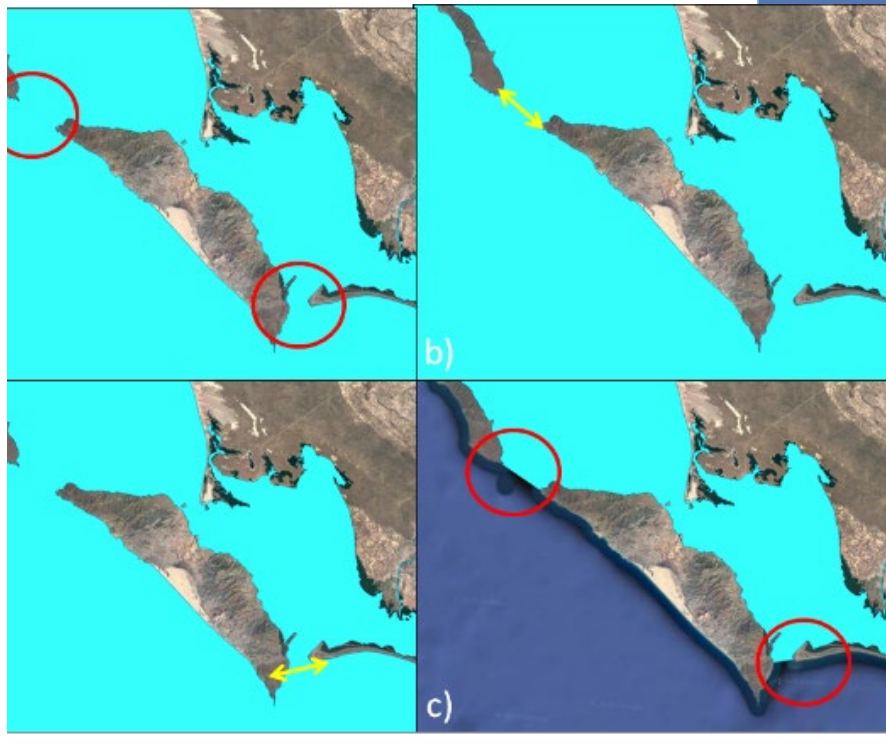
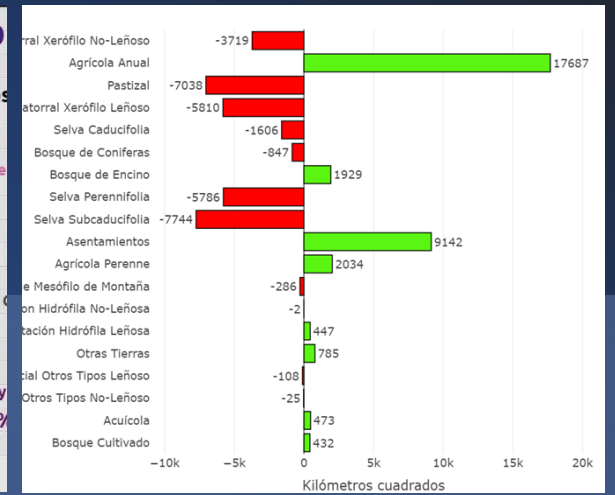
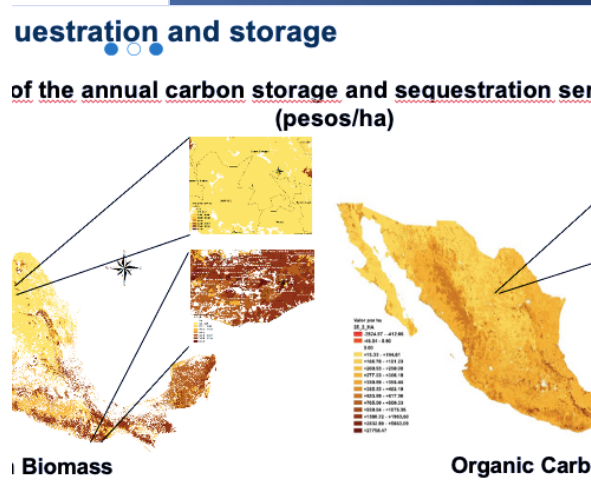


Montes Azules y Marqués de Comillas México

The Mexico Geospatial Data Cube allows us to see the effectiveness of establishing protected natural areas for the conservation of ecosystems such as Montes Azules, Chiapas.

Infrastructure - La Yesca Water Dam

The Data Cube allows us to see the creation of infrastructure and how it modifies the landscape, such as the La Yesca water dam, in the states of Nayarit and Jalisco, Mexico.



THANK YOU



Paloma Merodio Gómez
Vice President

paloma.merodio@inegi.org.mx

Conociendo
México

800 111 46 34
www.inegi.org.mx
atencion.usuarios@inegi.org.mx

    **INEGI** Informa