

Highlights from NCAVES in South Africa

Mandy Driver
Senior Biodiversity Policy Advisor
South African National Biodiversity Institute

Forum of Experts on SEEA Ecosystem Accounting
7 December 2021



A team effort! Many people and organisations



stats sa

Department:
Statistics South Africa
REPUBLIC OF SOUTH AFRICA

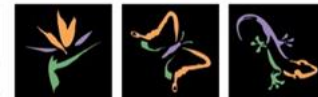


forestry, fisheries
& the environment

Department:
Forestry, Fisheries and the Environment
REPUBLIC OF SOUTH AFRICA

SANBI

Biodiversity for Life



South African National Biodiversity Institute



United Nations



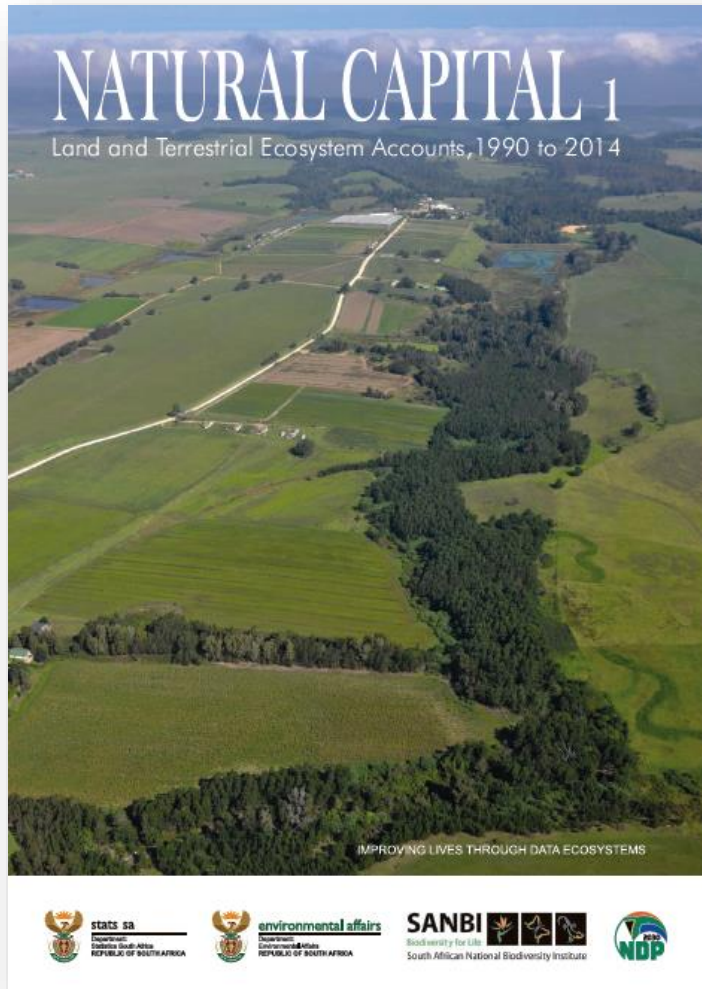
System of
Environmental
Economic
Accounting



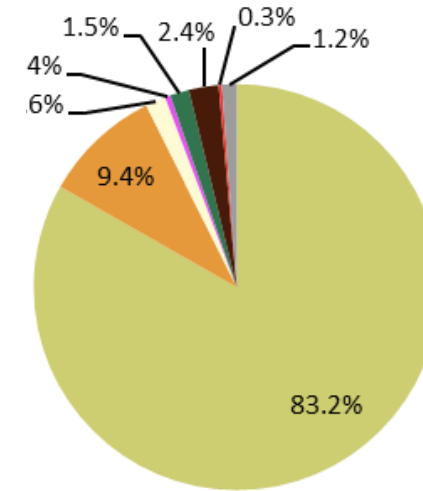
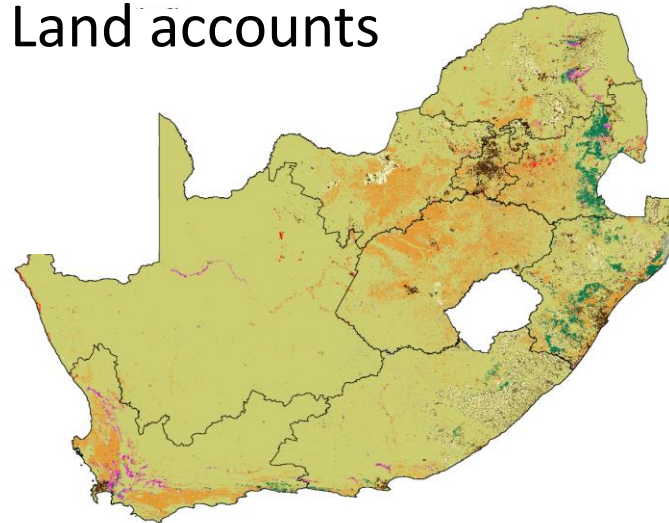
ANCHOR
environmental



Stats SA's new *Natural Capital* series, launched Dec 2020 with Land and Terrestrial Ecosystem Accounts, 1990 to 2014



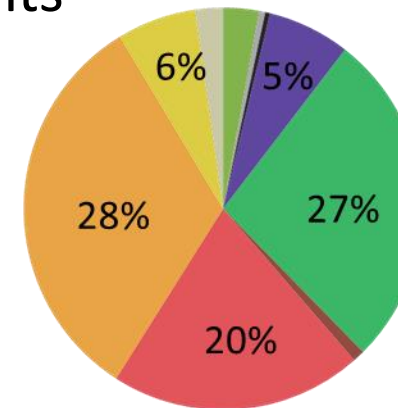
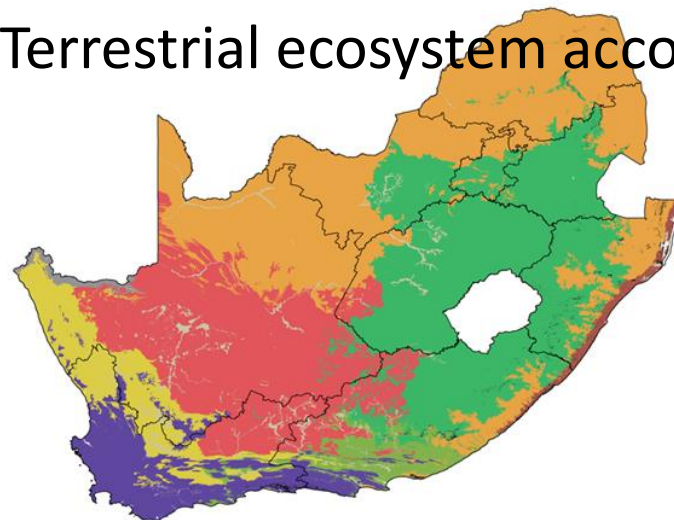
Land accounts



National land cover (tier 2) 2014

- Natural or semi-natural
- Commercial crops
- Subsistence crops
- Orchards and vines
- Timber plantations
- Urban
- Mines
- Waterbodies

Terrestrial ecosystem accounts

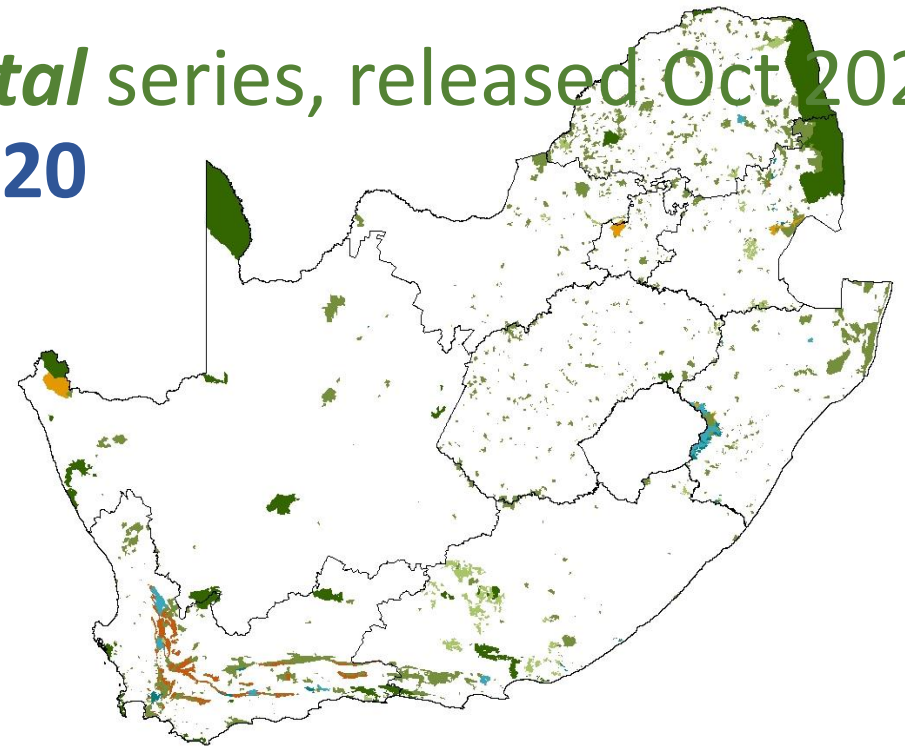
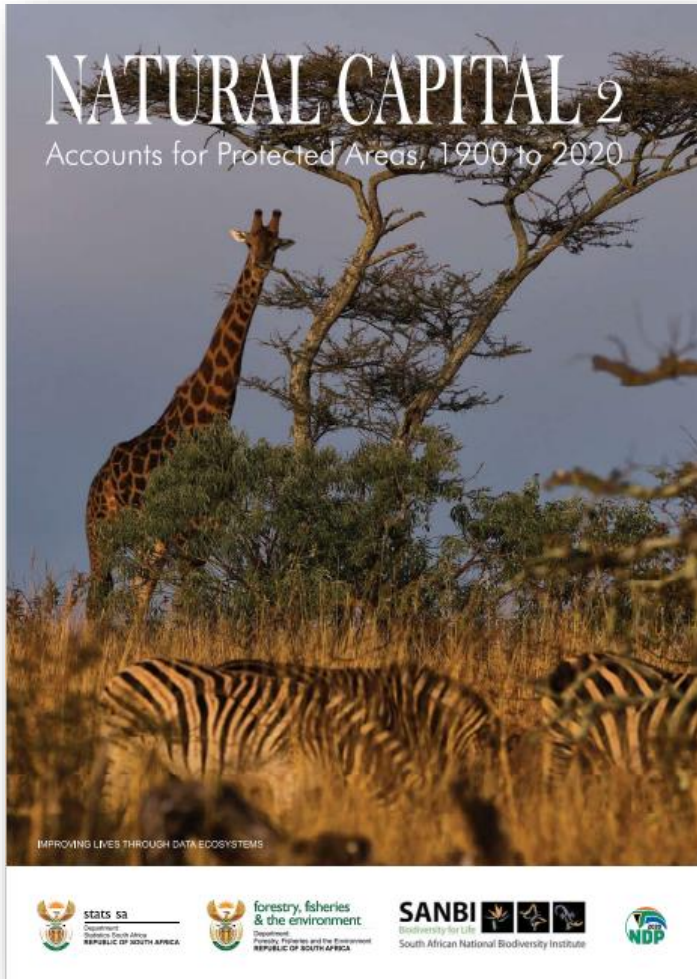


Biomes

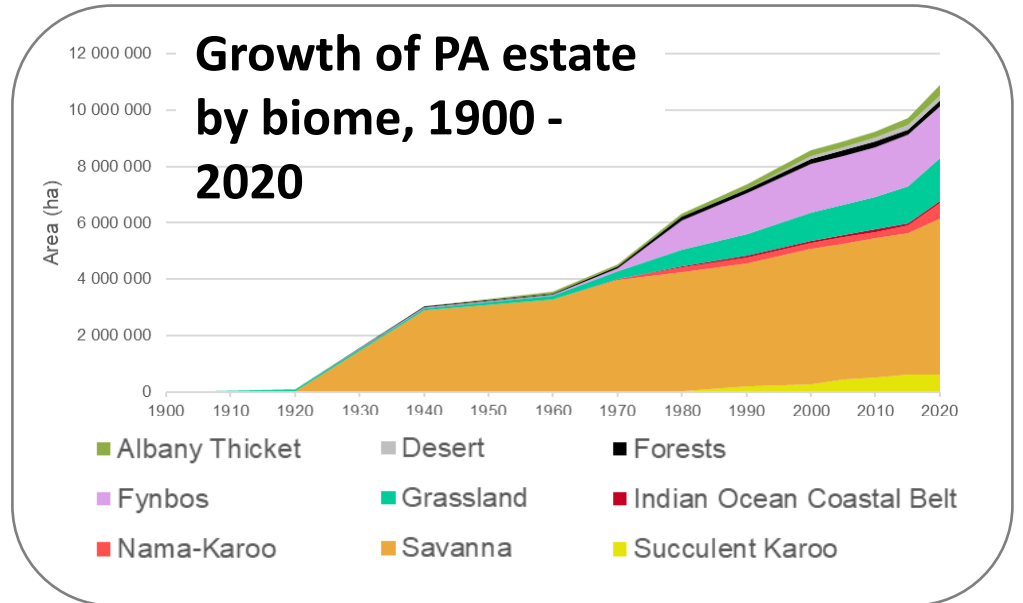
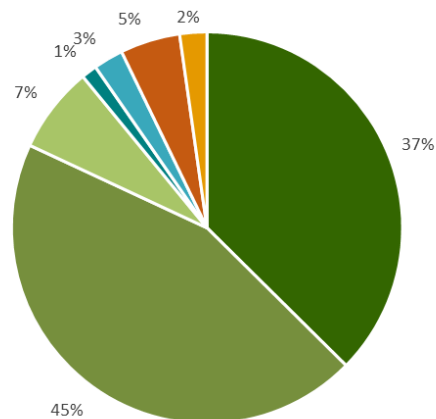
- Albany Thicket
- Desert
- Forests
- Fynbos
- Grassland
- Indian Ocean Coastal Belt
- Nama-Karoo
- Savanna
- Succulent Karoo
- Azonal Vegetation

2nd publication in Stats SA's *Natural Capital* series, released Oct 2021

Accounts for Protected Areas, 1900 to 2020



Composition of PA estate, 2020





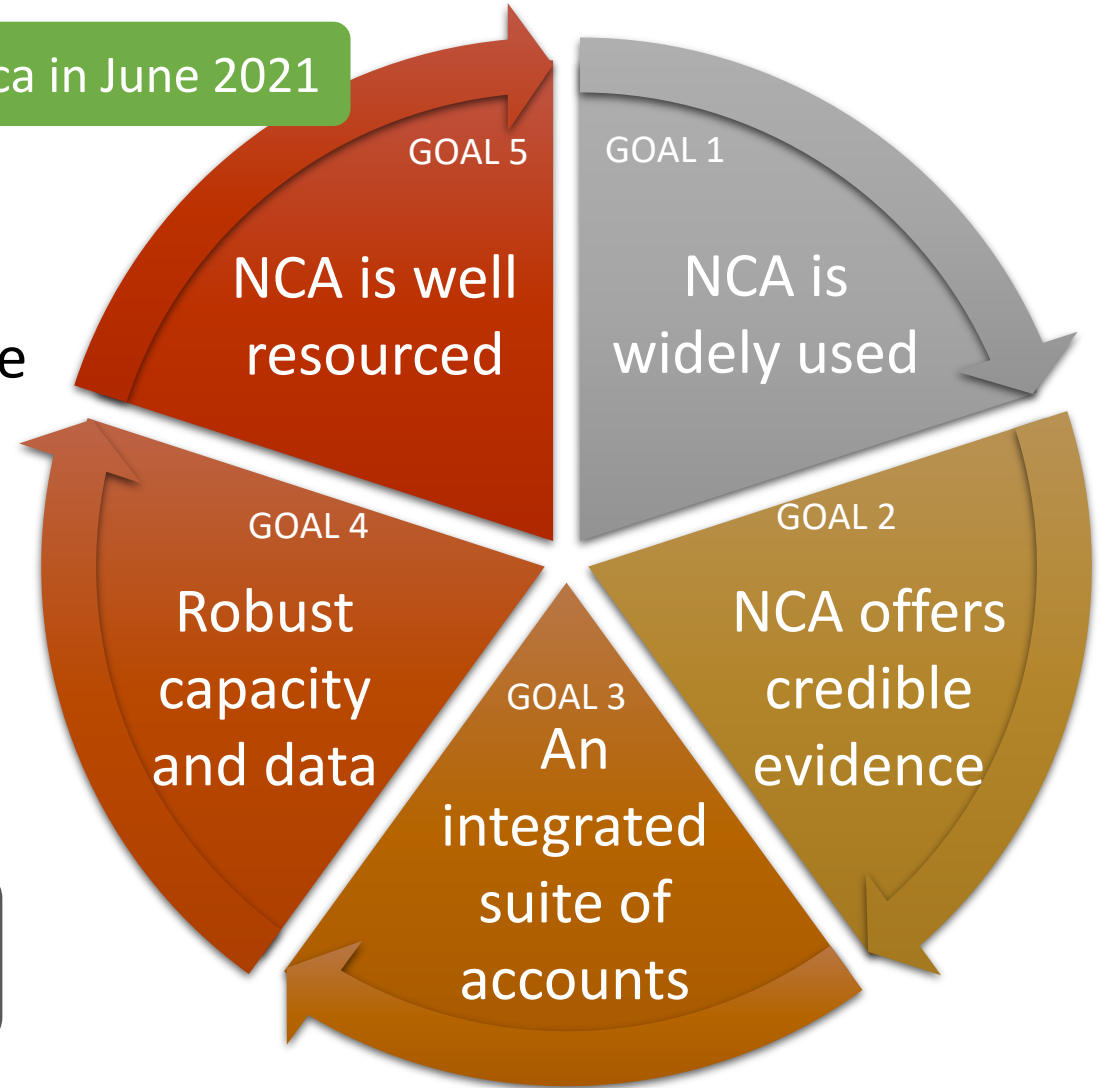
A National NCA Strategy to take NCA forward in South Africa

Published by Statistics South Africa in June 2021

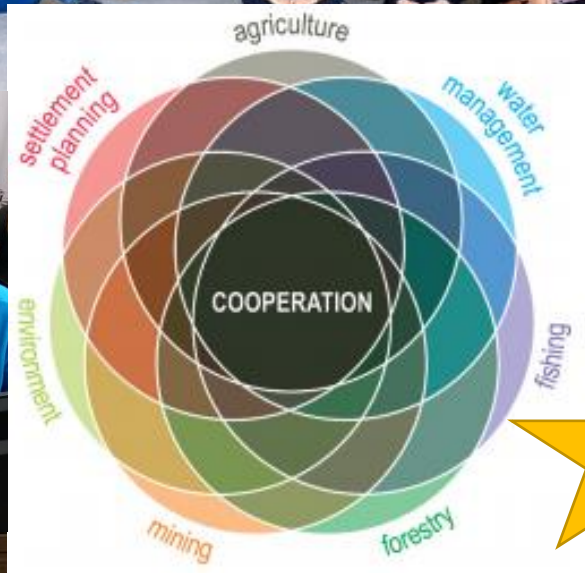
Vision

Natural Capital Accounting is widely used to provide credible evidence for integrated planning and decision-making, in support of the development needs of the country

5 inter-related goals →



Intensive co-development process with range of stakeholders over 3 years



Gains through EU's investment in NCAVES in SA

- A game-changing project for NCA in South Africa
- Built momentum and commitment across a range of partners
- Strengthened **products, people, processes and platforms** for NCA



Layering of successive donor-funded projects has been a key success factor



stats sa
Department: Statistics South Africa
REPUBLIC OF SOUTH AFRICA

forestry, fisheries & the environment
Department: Forestry, Fisheries and the Environment
REPUBLIC OF SOUTH AFRICA

SANBI
Biodiversity for Life
South African National Biodiversity Institute

United Nations
UN environment programme

System of Environmental Economic Accounting

ANCHOR environmental

IDEEA Group

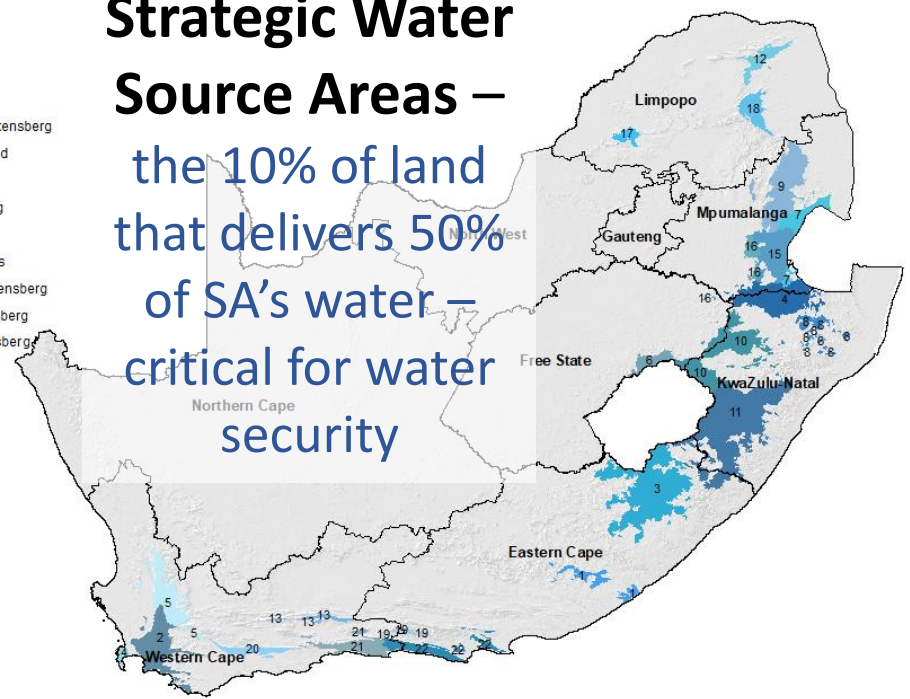
2030 NDP

Panel discussion at the National NCA Forum, July 2019

Future accounts in Stats SA's *Natural Capital* series will include

Accounts for **Strategic Water Source Areas** – the 10% of land that delivers 50% of SA's water – critical for water security

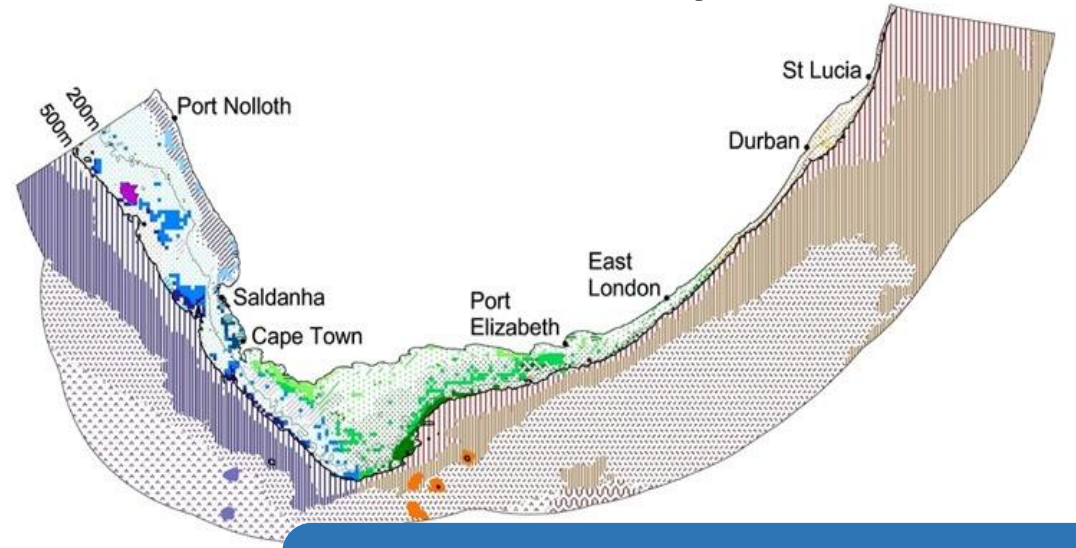
- SWSAs_sw
- 1. Amatole
 - 2. Boland
 - 3. Eastern Cape Drakensberg
 - 4. Ekangala Grassland
 - 5. Groot Winterhoek
 - 6. Maloti Drakensberg
 - 7. Mbabane Hills
 - 8. Mfolozi Headwaters
 - 9. Mpumalanga Drakensberg
 - 10. Northern Drakensberg
 - 11. Southern Drakensberg
 - 12. Soutpansberg
 - 13. Swartberg
 - 14. Table Mountain
 - 15. Upper Usutu
 - 16. Upper Vaal
 - 17. Waterberg
 - 18. Wolkberg
 - 19. Kouga
 - 20. Langeberg
 - 21. Outeniqua
 - 22. Tsitsikamma



SWSAs are a national policy priority:

- Medium Term Strategic Framework 2019-2024
- Five-year target: 11 of 22 SWSAs secured

Accounts for marine ecosystem assets



• Feeding into multi-sectoral **Marine Spatial Planning**

Biodiversity Economy Satellite Account

Biodiversity-related industries and products

? *How many biodiversity-related jobs are there?*

A. Conserving biodiversity

B. Utilising biodiversity

• Making the **social & economic case** for biodiversity