

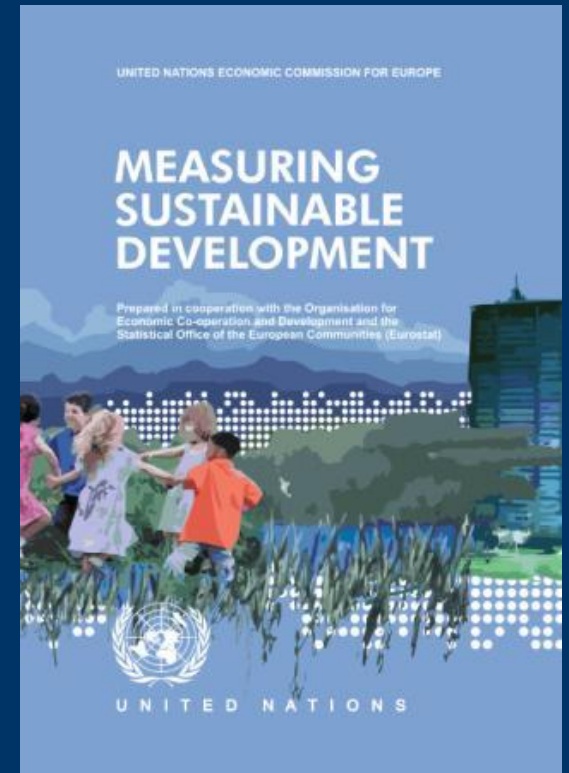
Task Force Measuring Sustainable Development (TFSD)

**leadership:
Rutger Hoekstra & Jan Pieter Smits**



Introduction

- UNECE/OECD/Eurostat
- Successor of the Working Group for Statistics of Sustainable Development (WGSSD)
- Mandate
 - Human capital
 - Social capital
 - Sustainable development indicators
- Invited experts



Time Line

- Start: September 2009
- State of play
 - Summary
 - Consultation
 - CES Board (February)
 - CES members (April)- Response from 41 countries/institutes
 - First draft of the final report
- Deadline has been extended to June 2012 (CES)



Characteristics

- Conceptually driven
- Conceptual classification:
 - Human Wellbeing (“here and now”)
 - Capital (“later”)
 - International dimension (“elsewhere”)
- Thematic classification
- Sustainable development indicators
 - Commonalities
 - Data availability



Link to SEEA

- Asset classification from SEEA
- Many indicators *could* come from satellites
 - SEEA is prime candidate, but.....
- International dimension
- Communication?

