

Data integration and accounting for sustainable water management in Europe - the Water Information System for Europe (WISE)

Beate Werner (EEA)

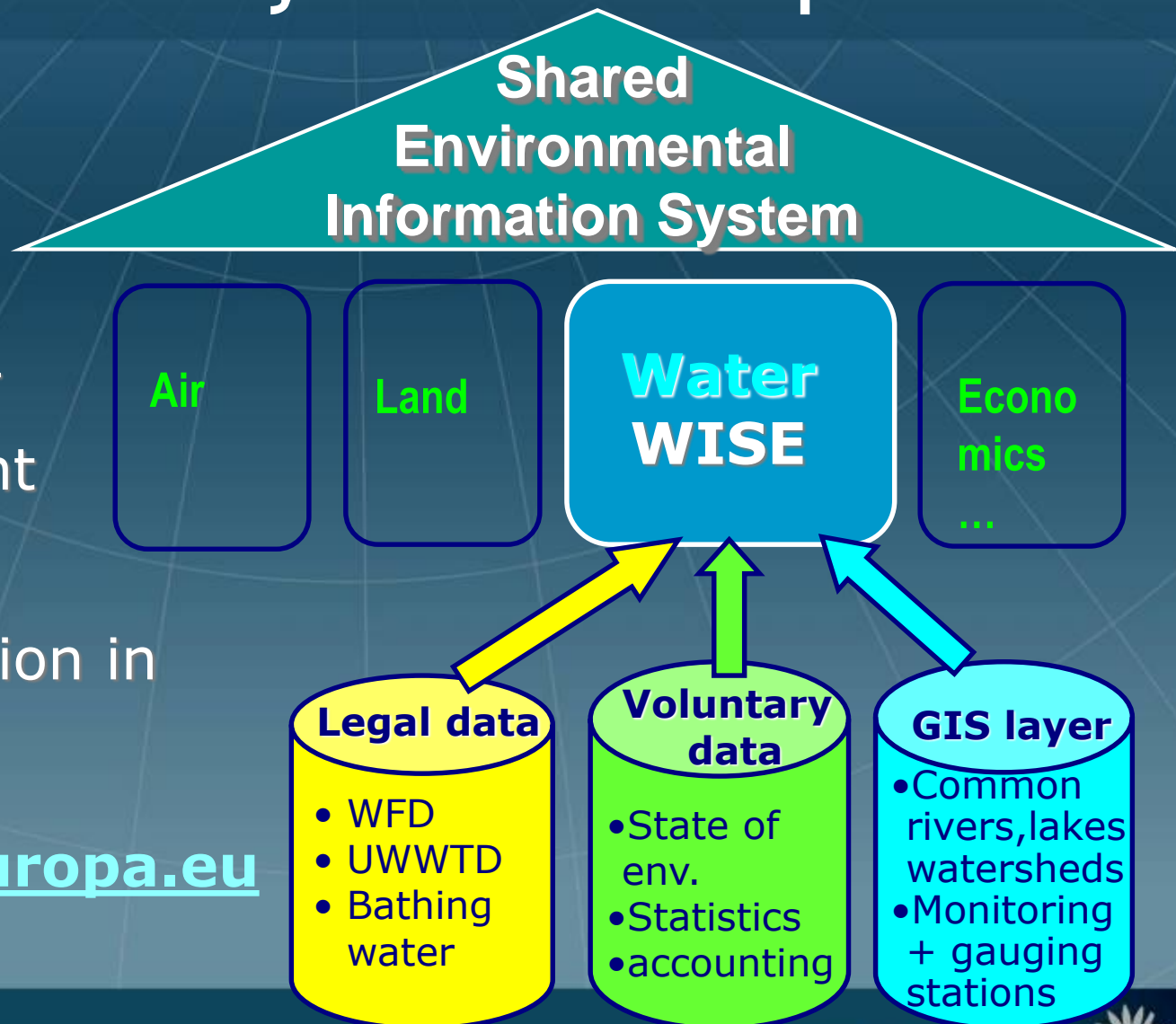
In cooperation with

Jürgen Förster (Eurostat)



Data integration in WISE - Water Information System for Europe

WISE –
Main entry point
for
Water information in
Europe
www.water.europa.eu

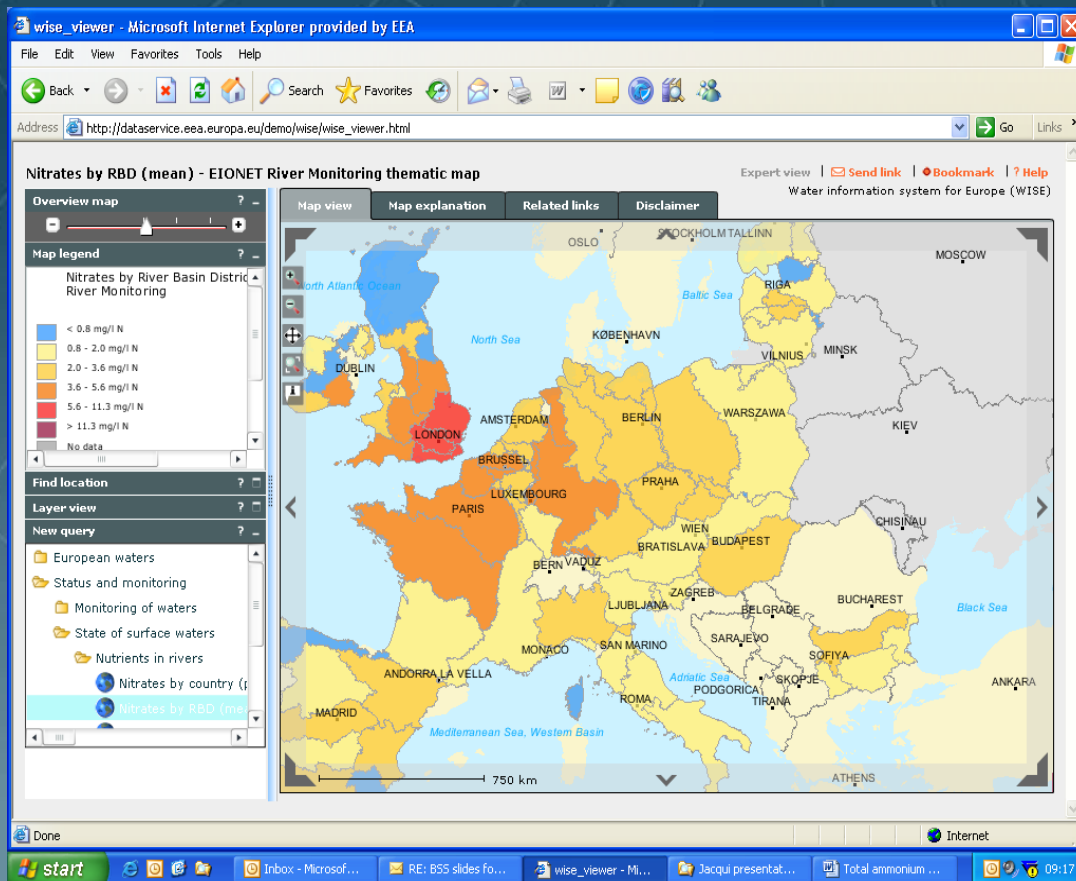


Example Nitrate by river basin districts mean annual concentrations of nitrate measured at River monitoring stations, by river basin districts, during 2005

Data on:

- Env. quality
- Treatment
- Availability
- Water Use

Ready for
aggregation
into
Indicators



Source: EC-JRC, 2007



Governance of water data in Europe

- **Shared Environmental Information System**
 - Institutional cooperation EU bodies and Member States
 - Collect once / use many times - (agree on uses)
 - Ensure harmonised formats and clear meta data
- **Cooperation from Local to National and Regional (European) scale - Transboundary River Basins**
- **Sectoral integration statistical, legal, environmental, agricultural, industrial data**
- **Support water accounts - first for water quantity**



Key messages

- Successful water management needs integration throughout sectors and monitoring systems; hydrology, environmental data and economics
- Link ALL water data, assessments and accounting to the relevant hydrological units - challenge for statistics
- Organisation in Shared Information Systems ensures transparent and efficient governance.
- Shared Systems leave data and information and basic QA/QC at source, but needs streamlining of definitions and assessment/accounting methodologies
- Statistical and in-situ data need integration with remote sensing, “near real-time” and global observatories

